

SUPPLEMENTARY GAZETTE.



NEW ZEALAND
GOVERNMENT GAZETTE
PROVINCE OF CANTERBURY.

Published by Authority.

All Public Notifications which appear in this Gazette, with any Official Signatures, are to be considered as Official Communications made to those persons to whom they may relate, and are to be obeyed accordingly.

By His Honor's Command,
EDWARD JOLLIE,
Provincial Secretary.

FRIDAY, MAY 1, 1868.

ANNUAL REPORT
OF THE
BOARD OF EDUCATION,
FOR THE
YEAR ENDING MARCH, 1868.

TO HIS HONOR THE SUPERINTENDENT.

SIR,

The Board of Education has the honour to present its Annual Report for the year 1867-8, according to the terms of the "Education Ordinance, 1864."

The periodical reports of the Inspector of Schools, to be found in the Appendix to this Report, will afford general information as to the efficiency of the Schools, and their progress during the last year. It will be seen that, with few exceptions, the general standard is satisfactory, and that the staff of Teachers perform their duties with zeal and ability.

STATISTICS.

Since the date of the last Report, 5 new Schools have come under the operation of the "Education Ordinance, 1864":—The Tai-Tapu, Cust, Leeston, Geraldine, and Harewood Schools.

Of these, the Cust and Leeston Schools have been established in regularly constituted Educational Districts.

The remaining three are aided by means of a special grant of £2 for every scholar in average attendance under clause 43 of the Ordinance.

In addition to these, a Roman Catholic School at Kaiapoi, and a School at East Selwyn have likewise been in receipt of a special grant. The certificated Master who was in office when the latter School first obtained assistance having retired, and the School authorities having failed to obtain another Teacher with the requisite qualifications, the grant was necessarily withdrawn after being in operation for two quarters. The Kaiapoi Roman Catholic School has been closed since the occurrence of the heavy floods in February.

The total amounts spent on the erection of the respective School Buildings in the districts of Cust and Leeston have been as follows:—

Cust	£272	16	0
Leeston	250	0	0

In the case of the Cust School, the inhabitants of the district contributed £68 15s 0d, besides the £20 for apparatus. The remainder of the sum, £204 1s, was supplemented by the Board.

With regard to the Leeston School, the residents in the district subscribed the sum of £62 10s for the erection of the buildings, the balance being contributed by the Board.

Public Meetings have been held at Mount Grey Downs, Loburn, Flaxton, and Governor's Bay North, with the view of forming those localities into Educational Districts, and School Buildings are in course of construction in the two latter places.

A memorial, having the same object in view, has been received from the inhabitants of Southbridge. The means, however, at the disposal of the Board were not sufficient to allow of any assistance being granted during the present financial year.

Memorials have also been received from the residents in the districts of Springston, Malvern Hills, and Ashburton.

Thus it is evident that an increasing demand exists for means of Education in remote districts, and it will be necessary to expend a sum in excess of that usually allowed for the establishment of new Schools, if the children of Settlers in outlying districts are to be placed on any footing of equality with those whose parents reside in more settled localities.

The rapid increase in the numbers attending the Tai-Tapu School since aid was first granted by the Board is most satisfactory; during the quarter ending March 31st, 1867, there was an average attendance of 18 Scholars; in the December quarter the average was 32.

The buildings of the Riccarton School having been repaired and improved at a cost, as stated by the School authorities of £170, the Board granted assistance to the amount of £20.

The average number of Scholars at the Avonside School having increased to 53, the Board has, in accordance with the provisions of the Ordinance, made an additional annual grant in favour of this School of £2 per head for every child in average attendance beyond 40 in number, with the view of providing a portion of the salary for an Assistant Teacher.

With regard to the following statistics, it must be borne in mind that they are drawn up for the year 1867, in order to facilitate a comparison between that year and the year 1866. They do not, therefore, apply, like the remainder of this Report, to the year commencing 1st April, 1867, and ending 31st March, 1868.

The total number of Schools which received aid from the Board during 1867, was 52. Of these, three were Superior Schools. Two of the Ordinary Schools have ceased to receive Government assistance, as previously mentioned.

The whole number of children on the books of the different Ordinary Schools during that year was 4039, being an increase of 518 on the year 1866. The average attendance was 1728; that of 1866, being 1549.

The total number of attendants during the December quarter, 1867, was 2815, being an increase of 443 on the December quarter of 1866.

The average attendance during the same quarter was 1950; that of the December quarter in the previous year being 1632.

The amount of School Fees received during the year 1867 was £3354 14s 4d, being an increase of £276 17s 4d on the amount received during the previous year.

The total expenditure on account of Education during the year 1867, including besides the grants made by the Board, the School Fees and money raised in the various Educational Districts for building and other purposes, amounts to a gross total of £10,064 12s 1d, of which the School Fees amounted to the sum of £3,354 14s 4d, and the money raised by private subscription for expenditure on buildings, and for the purchase of books, fittings, and apparatus to £306 14s 5d.

If from this sum be deducted £1,091 2s 4d, the amount spent on the maintenance of Superior Schools and Scholarships, it appears that the total Expenditure on Ordinary Schools, including the expenses of department, amounted during the year to £8,973 9s 9d.

The number of children in average attendance being 1728, the average cost per child amounts to £5 3s 3d, or a decrease of 18s 2d on the total average cost for the year 1866.

After deducting the amounts raised by School Fees and local subscriptions from the gross total expenditure of £10,064 12s 1d, it appears that £6,403 3s 4d has been paid out of the Provincial Treasury, which Expenditure is distributed as follows:—

	£	s.	d.
Maintenance of Superior Schools	750	0	0
„ Ordinary Schools	3,947	16	8
Expenses of Department	653	16	0
Scholarships	341	2	4
Contingencies	63	17	4
Establishment of New Schools	646	11	0
	<u>6,403</u>	<u>3</u>	<u>4</u>

If the amount spent on Superior Schools and Scholarships be deducted from this sum, the cost of the maintenance of Ordinary Schools has been to the Province £5312 1s, or at the rate of 3 1s 6d for every child in average attendance.

Comparing this rate with the similar one of 1866, it appears that the average cost to the Province for educating each child has been less by 15s during the year 1867, than during the year 1866.

As, however, these calculations include the amount expended on the erection of New Schools, a sum which varies very considerably every year, it is desirable to ascertain what is the average cost to the Province of educating each child were this item omitted. It would appear that on this basis, the average cost per child during 1867 was £2 14s, while in 1866 it was £2 16s 9d.

EDUCATIONAL RESERVES.

The Board is informed that some progress has been made in the preparation of the grants of land set apart as the Endowment of a Classical School, and it is expected that, as soon as the transfer to the Superintendent is completed, a considerable revenue will be created, sufficient at least to allow of the establishment of the institution on however small a scale.

The Board has represented to the Government the desirability of acting upon a Resolution passed by the Provincial Council in a former Session, to the effect that considerable reserves should be made as an Endowment for Ordinary Schools, and that, in the mean time, application should be made to the General Government for Crown Grants of those reserves already set apart for Educational purposes. The necessity for procuring some permanent source of income for the establishment and maintenance of Schools was very strongly insisted upon by the Commission on Education so long ago as 1863, in contemplation of a falling off in the Provincial Revenue, such as that which has lately taken place. And the Board ventures to renew the recommendation which it has from time to time made, that reserves as ample as possible should be made for this purpose. The plan of making reserves as Endowments for Schools has been adopted very largely in the Province of Otago, and apparently with marked success. The Report of the Board of Education of that Province for the nine months ending September 30th, 1866, states that upwards of

18,000 acres had already been reserved, as well as 317 town sections, and that further application had been made for the due proportion of land in townships and rural blocks in which reserves had not previously been set apart. From further information, it appears that the income which is already obtained from the Otago Educational Reserves amounts to about £1600 per annum.

SCHOLARSHIPS.

The examination of candidates for the six Government Scholarships of 1867 took place in the month of June.

The names of nine competitors for the Open Scholarships were received, seven of whom were being educated at the Christ's College Grammar School, and the remaining two at the High School, Christchurch.

With regard to the Scholarships open only to boys attending District Schools aided by the Board, a preliminary examination was held, with the view of ascertaining how far the candidates were qualified to compete.

The names of thirty-four boys were entered as competitors, viz. :—

- Ten from St. Michael's School.
- Four from Christchurch Wesleyan School.
- Four from Papanui Church School.
- Four from Rangiora Boys' School.
- Three from Kaiapoi Church School.
- Two from St. Luke's School.
- Two from St. Albans School.
- Two from Ashley Bank School,
- One from Woodend School.
- One from Lower Heathcote School.
- One from Lyttelton Church School.

Of these candidates, three were disqualified from the fact of their being above the specified age, and thirteen others did not possess attainments sufficient, in the opinion of the Board, to justify any further competition on their part. The candidates for the Junior Scholarships were thus reduced to eighteen.

The examinations for both classes of scholarships took place in a room adjoining the Immigration Barracks, and resulted as follows :—

The two Open Scholarships were awarded to—

1. William H. Atack, High School, Christchurch.
2. William P. Reeves, Christ's College Grammar School.

The four other scholarships to—

1. John A. Caygill, Christchurch Wesleyan School.
2. Charles E. Jennings, Papanui Church School.
3. Robert Triggs, Papanui Church School.
4. H. A. Ladbroke, Lower Heathcote School.

The Board also awarded prizes in books to Walter Bean, William Heney, and W. Charles Bean, for the very creditable manner in which they passed their examination.

The results from the establishment of Government Scholarships appear to be eminently satisfactory. Three of the Junior Scholars of 1866 and one of 1867 having been placed at one of the best of the district schools, it was found that they were so much in advance of the rest of the children receiving instruction there as to make it desirable, for the purpose of providing them with a course of instruction suitable to their attainments, as well as with a view of subjecting them to some competition, that they should be removed to a higher class of school.

The Board accordingly directed that letters should be addressed to the authorities of Christ College Grammar School, Christchurch and Lyttelton High Schools, and Pigeon Bay School, to ascertain whether board, lodging, and tuition would be provided at these institutions, or any of them, for the sum payable on account of the Scholarships, viz., £40. The authorities of the Christ College Grammar School very liberally offered to take two

of the Scholars free of charge on account of tuition, but it was found on enquiry that the charge for board and lodging was considerably in excess of the sum available. On behalf of the High School, Christchurch, and the Pigeon Bay School, the charge of £40 per annum was agreed to in consideration of the circumstances. Same delay having occurred in concluding this arrangement with the High School at Christchurch, the Board decided to send all the above Boys to Pigeon Bay School. It has however, been subsequently arranged that two should be sent to Christ's College Grammar School; the parents in the first instance defraying all charges, and receiving from the Board the value of the Scholarships.

The following are the names of the Government Scholars, and the Schools at which they are being educated:—

Name of Scholar.	School from which Scholarship was gained.	Date of Scholarship.	School at which Scholar is being now Educated.
Arthur W. E. Stiffe ...	Christ College Grammar School.	1866	Christ College Grammar School.
Henry Cotterill	" " " "	1866	" " " "
William H. Atack	High School, Christchurch.	1867	High School, Christchurch.
William P. Reeves	Christ College Grammar School.	1867	Christ College Grammar School.
George Merton	Rangiora Boy's School.	1866	" " " "
James R. Wilkinson ...	Halswell School.	1866	Pigeon Bay School.
Thomas W. Wilkinson ...	" "	1866	" " "
John A. Caygill	Wesleyan School, Christchurch.	1867	Christ College Grammar School.
Charles E. Jennings } ...	Papanui Church School.	1867	Papanui Church School.
Robert Triggs	" " "	1867	" " "
H. A. Ladbroke	Lower Heathcote School.	1867	" " "

John Jones, one of the Junior Scholars for 1866, resigned his scholarship, after a tenure of about fifteen months.

EFFICIENCY OF SCHOOLS.

A steady improvement, more particularly in the attainments of the junior classes, has been observable throughout the year. The inclemency of the weather during nearly the whole of that period, has doubtless retarded the progress of the scholars, especially in outlying districts, and there is reason to believe that, had not the Province experienced an unusually severe season, the results would have been still more satisfactory.

There is, however, one point to which the Board would wish to draw the attention of the school authorities. The Board has observed that, in several cases, the school registers are not regularly kept, and has issued stringent instructions to the several School Committees upon the subject. It is obvious that unless great accuracy is insisted upon, the preparation of reliable returns is impossible. It is also desirable that a greater punctuality in forwarding the Quarterly Returns should be observed, seeing that irregularity in this particular not only evinces a want of system in the internal management of a school, but creates much confusion in cases where it is necessary to compile a general statement of the position of the schools in the Province.

In accordance with a resolution passed by the House of Representatives, steps have been taken, where practicable, to subject the boys in Schools maintained wholly or in part by public funds to a course of Military Drill. The utility of such training in promoting habits of smartness, more particularly wanting in country localities, is obvious, and the Board is desirous that, if possible, all Schools may benefit by the introduction of this addition to their usual course of instruction.

12 Candidates for Masterships have been examined, ten of whom have been found to possess the qualifications necessary to conduct either small country schools or those of a superior grade. It is a matter of congratulation that there appears to be every probability that the District Schools of the Province will, for the future, contribute in some degree to the future maintenance of an efficient staff of Teachers. Two out of the twelve candidates above-mentioned, received the greater part of their education at one of the Ordinary Schools aided by the Board. One was found to be capable of holding an Assistant Mastership, or of conducting a small country school, and although the attainments of the other were not in a sufficiently forward state to justify a certificate of competency being granted to him, yet the Board cannot but view with pleasure the indication thus offered, of a tendency on the part of Scholars trained in the Province to offer themselves as candidates for positions which have as yet been filled entirely by persons educated elsewhere.

The amount of books, maps, and apparatus disposed of out of the Educational Depot during the past year, is valued at £345 6s.

The Board has, according to its usual practice, expended a small sum of money in the distribution of prizes to the most deserving of the Scholars attending the Ordinary Schools. The names of the children to whom these prizes have been awarded, will be found in the Appendix.

HENRY JOHN TANCRED,

Chairman.

31st March, 1868.

BOARD OF EDUCATION,

(QUARTER ENDING MARCH 31, 1867.)

SUMMARY REPORT OF INSPECTOR OF SCHOOLS.

To the Honorable H. J. Tancred, Chairman.

SIR,—I have the honour, in obedience to your instructions, to submit a Tabular Summary of the Quarterly Returns, and a Schedule as to the efficiency of the Schools examined, both for the quarter ending March, 1867.

I regret that, owing to the non-arrival of the returns from some Schools, and to the inaccurate state in which others have been sent in, I am unable to complete the Tabular Summary, and to ascertain the totals for the quarter.

It will be seen from the Schedule as to the efficiency of Schools examined, that the number of Schools examined during the quarter has been 33, including 1080 children. The interruption of the Schools by harvest and holidays, and the full occupation of my time in the office and depôt in the earlier part of the quarter, has not permitted the examination of a greater number.

A few of the more important Schools omitted up to March 31st, were examined early in April, including the Christchurch, St. Michael's, Wesleyan, and St. Luke's Schools.

I found but a small attendance in the Country Schools, owing to the long harvest, and to the employment of the children in the fields, and at other work after harvest; many children, even girls, having been required to assist. A somewhat larger attendance might have been secured by previous notice of Examination, but I did not think this desirable.

The Schools more highly commended for efficiency, are:—

The Christchurch Wesleyan School, which has produced the best papers on Bible Knowledge, English Composition and Grammar; and in which the other subjects are satisfactory.

The Papanui St. Paul's School, which has the highest average of accuracy in Arithmetic and Spelling, and a general efficiency.

The Okain's Bay School, where, with a smaller number, the attainments are similar to those of the Papanui School.

The Rangiora School in which the reading of the First Class is more spirited, and better characterized by *intelligence* and *expression*, than that of the Schools in general. In this School, the First Class comprises several Boarders and other regular attendants.

The Kaiapoi Church School for the equably careful instruction of the junior, as well as the senior classes, and for the fair average of accuracy.

I have not included the Pigeon Bay School in the above list; because it has already an old established reputation for satisfactory work; and, owing to their unusual time of vacation, the School had not fully re-assembled after the holidays; and was not, therefore, so fully examined as the other Schools.

The Schedule as to efficiency shows the Schools to be mostly in either an efficient, or an improving state. Minor defects have been pointed out and suggestions for improvement made in the course of inspection and on casual visits; more glaring deficiency, or a recurrence of cause of complaint, has been brought before the notice of the Board.

I have the honour to be, Sir,

Your obedient servant,

J. P. RESTELL,

Inspector of Schools.

BOARD OF EDUCATION, 1867,

QUARTER ENDING MARCH 31st.

SCHEDULE AS TO EFFICIENCY OF SCHOOLS EXAMINED.

	List of Schools Examined.	Date of Examination.	Numbers Present.	Site, Buildings, and Premises.	Books and Apparatus.	Organization and Discipline.	Bible Knowledge.	Elementary Secular.	Ordinary Secular.	Remarks.
1	Christchurch R. Catholic	Feb. 5	103	A	A	A	B	A		Steadily improving.
2	Lyttelton Church of England ...	" 20	60	A	A	B	A	B	A	Much improved.
3	Do Wesleyan	" 11	81	A	A	A	B	A		Efficiency and attendance increased.
4	Kaipoi Church of England ...	Mar. 6	39	A	A	A	A	A	A	A very satisfactory school.
5	Do Wesleyan	" 6	23	B	B	C	A	B		The inconvenient shape, dimensions and arrangements, hinder efficiency.
6	Woodend	" 5	29	B	A	B	A	A	B	Considerably improved.
7	Saltwater Creek ...	" 4	15	A	A	B	A	A		
8	Leithfield	" 4	11	A	A	A	A	A		
9	Ashley Bank	" 12	13	A	A	A	A	A		
10	Rangiora Boys' ...	" 13	56	A	A	A	A	A	A	A good Day and Boarding School.
11	Do Girls'	" 14	36	B	A	B	B	B		
12	Fernside	" 14	19	A	A	A	A	A		Very satisfactory.
13	Oxford	" 15	28	B	A	B	A	B		
14	Courtenay	20 & 21	19	A	A	B	B			New school, has begun very well.
15	Akaroa	Feb. 13	22	B	A	A	A	A		
16	Pigeon Bay	" 12	29	A	A	A	A	A	A	A superior course well carried out.
17	Duvauchelles Bay	" 18	27	B	B	A	A	A		
18	Okain	" 14	27	A	A	A	A	A	A	A very satisfactory school.
19	Little Akaroa	" 15	20	B	A	B	A	B		
20	Riccarton	Mar. 1	30	A	A	A	A	A		Improving.
21	Prebbleton	" 22	19	B	A					New Teacher.
22	Templeton	" 22	12	A	A	A	A	A		The late Master had very satisfactorily conducted this school until his lamented decease.
23	Lincoln	" 18	9	A	A	A	B	A	A	
24	Upper Heathcote	" 18	18	A	A	C	A	B		
25	Halswell	" 18	18	B	A					Considerably improved as to classification and arrangements.
26	Heathcote Valley	Feb. 7	36	B	B					New Teacher.
27	Lower Heathcote	" 6	42	A	C	B	A	A		
28	Avonside	Mar. 7	40	A	A					
29	Papanui St. Paul's	" 29	75	A	A	A	A	A	A	A very satisfactory school.
30	Do Wesleyan	Feb. 21	27	B	B	B	A	B		Somewhat improved.
31	North Road	Mar. 11	15	B	B	B	A	B		
32	Harewood	" 30	11	B	B	B	A	A		
33	St. Alban's	" 8	71	C	A	A	A	A		Considerably improved since appointment of Mr. Hopper.
			1080							

BOARD OF EDUCATION,

(MARCH 29—APRIL 25) 1867.

MONTHLY REPORT OF INSPECTOR OF SCHOOLS.

To the Honorable H. J. TANCRED, Chairman.

SIR,—I have the honour, to submit a Summary Report on the schools examined during the month, and also to report the examination of one Candidate for a Mastership.

OF THE SCHOOLS EXAMINED:—

Papanui St. Paul's ... March 29 ... Present 75 ... This school is well organized, efficiently conducted and largely attended. The average of accuracy is greater than that of any of the other ordinary schools; this is more especially observable in the Spelling and Arithmetic, subjects in which a numerical test is decisive. Taking 1 as the standard of accuracy; this school has attained 0.7, the next nearest approach being 0.5.

The copy books are very neat and creditable, giving evidence of constant supervision by the teachers.

The registers are remarkably neat, they are kept with fidelity and accuracy. The result is, that correct returns are punctually forwarded.

I believe that the Local Committee purpose *again* to enlarge the School; but, as there is ample school-accommodation in the immediate neighbourhood, their funds would be better bestowed on the remuneration of an assistant teacher, or a pupil teacher.

St. Michael's School ... April 1 & 2 ... Present 135 ... The building requires some repairs, which the Committee, present at the examination, promise to ensure. The arrangement of the desks and classes is not a good one; they are badly placed and too crowded. The school is not now so over-crowded as to offer any excuse for this arrangement.

The attainments were on the whole satisfactory; but the school ought to take a higher position than it has at present attained among the ordinary schools.

St. Luke's School ... April 3 ... Present 78 ... The insufficiency and the bad arrangement of desks, pointed out at this date, are being rectified.

The good order and attainments are very creditable to the mistress and the new master; but especially to the former, who formed the school, and has been in charge of it for many years.

Papanui Wesleyan School April 4 ... Present, 20 ... Discipline and efficiency weak at present. Should show great improvement by the next examination.

Christchurch Wesleyan School ... April 9 ... Present, 144 ... This is now the largest and most efficiently conducted of the Ordinary Schools. The master, Mr Cumberworth, is devoted to his work. He is assisted by his daughter and another female assistant.

The school excels in knowledge of the Bible and in general knowledge; the average of accuracy throughout the school in Arithmetic and Spelling is very fair.

Several good papers were done during the examination.

Creditable copy-books, satisfactory registers, a good time-table, and a sufficiency of books and apparatus make up the complement of this model school.

Lower Heathcote School,
Ferry road ... April 12 ... Present, 31 ... Another set of desks will be wanted.

There is still the same deficiency which I noticed in a previous report as to the furniture of the school. A *clock* is wanted, in order to ensure punctuality in the school-hours and in the change of lessons.

A *fender*, to protect the floor from falling cinders or embers; and *maps*, for occasional reference and instruction in Geography.

The registers were incomplete as to *dates*, *side* and *foot* totals, and averages. No attention has been paid to the circular of Dec. 8, requiring "scholars' ages,"

“length of stay,” and “school-days present,” to be entered in the quarterly columns provided for that purpose in the school register.

Suitable books for the lower classes have been obtained since the inspection of the school.

Heathcote Valley ... April 12 ... Present, 30... The chimney and outdoor office have been blown down again, and they lie an unsightly wreck.

There is a deficiency of books and apparatus; there are *no Bibles!* and a blackboard is wanted.

The discipline and attainments are somewhat improved.

Robert Donaldson, candidate for a Mastership in an Ordinary School, was examined on the 8th inst., as per certificate sent herewith.

I have the honour to be, Sir,

Your obedient Servant,

J. P. RESTELL,

Inspector of Schools.

BOARD OF EDUCATION,

(APRIL 26—MAY 30) 1867.

SUMMARY REPORT FOR THE MONTH.

To the Honorable H. J. TANCRED, Chairman.

SIR,—I have the honour to submit a Summary Report on the Schools and Candidates examined during the month.

Also, a Special Report on the proposed Kaiapoi Roman Catholic School.

Also, a Report on the Candidates for Junior Scholarships, according to the result of their preliminary examination.

Also, Memoranda as to the Duvauchelles Bay School.

Eleven Schools, including 384 children, have been examined.

Two Candidates for appointments have been examined.

OF THE SCHOOLS EXAMINED:—

- Kaipoi (proposed) Roman Catholic School ... April 29 ... Present, 18 ... Special Report.
- St. Andrews Christchurch...April 30 ... Present, 58 ... Very creditable.
- Akaroa School ... May 3 ... Present, 39 ... Too many little classes. Arithmetic and Writing deficient. Other subjects satisfactory.
- Okains Bay ... May 6 ... Present, 30 ... Very creditable. A resident of the Bay informed me that there were four poor families, including 20 children unable to pay the school fees. The Master thinks it an idle excuse since he has at times offered to take such children *free*, rather than that they should lose their education; but, they are not sent.
- Akaloa School ... May 7, 1867 ... Present, 10 ... The attendance and attainments have fallen off. The Committee waited the result of the Examination, and have since decided to dismiss the Master, who was at first recommended by the Rev. H. Torlesse. I do not think that he has been negligent; but that age and infirmity render him incapable.
- Duvauchelles Bay ... May 8 ... Present, 25 ... (20 boys, 5 girls). One class (*a low one*), was deficient in Bible Knowledge. The Arithmetic and Writing were also less satisfactory than I should have expected. The other subjects were satisfactory. There are fewer girls, the attendance has not otherwise fallen-off, indeed there were *three* more children than when I examined the School in

September last, though *two less* than in February. I investigated certain charges against the master; but ascertained them to be not well grounded. They form the subject of the Memoranda above-mentioned.

Pigeon Bay School ... May 9 ... Present, 29 ... Satisfactory.

Lyttelton Church

England School ... May 10 ... Present, 42 ... The morning wet and cold, Discipline weak. Otherwise satisfactory. The Junior Classes were much improved.

Lyttelton Wesleyan School, May 10 ... Present, 50 ... Cold and wet afternoon. The premises have been enclosed by a very neat fence of painted railings. The Upper Classes were deficient in Spelling and Arithmetic. The other subjects and classes were satisfactory.

Kaiapoi Church School ... Present, 49 ... Satisfactory.

Kaiapoi Wesleyan School ... Present, 34 ... The order much improved; the attainments satisfactory.

Edward Morgan, candidate for the Mastership of the Templeton School, was examined on May 2nd, as per certificate of that date.

Mrs. Higgins, Mistress of the Kaiapoi Roman Catholic School, as per Special Report on that School, and certificate of May 29th.

Details of Examinations are entered in the Journal.

I have the honour to be, Sir,

Your obedient servant,

J. P. RESTELL,

Inspector of School.

SPECIAL REPORT ON THE PROPOSED KAIAPOI ROMAN CATHOLIC SCHOOL.

The school has been in full work since the beginning of the present quarter.

It was inspected on the 29th ult.; there were present eighteen children, mostly strangers to me, they having attended the other schools very little or not at all.

The site is a suitable one, but in the immediate neighbourhood of the other schools.

The building was formerly known as Hutchinson's store; the front room, 24 by 12, and 8 feet in height, is available for school use. This room is well-lined, and has a warm, north-westerly aspect. But it has at present neither fireplace, stove, nor other provision for warming the room in winter. The Committee were about making some such provision.

The desk, forms, books, and apparatus are sufficient.

The children were clean and orderly at the time of my unexpected visit.

They had been carefully taught by a Mistress understanding her work.

I have forwarded a certificate of the fitness of the Mistress.

J. P. RESTELL,

Inspector of Schools.

May 30, 1867.

BOARD OF EDUCATION, MAY 1867.

SPECIAL REPORT AFTER PRELIMINARY EXAMINATION ON CANDIDATES FOR JUNIOR SCHOLARSHIPS.

Thirty four candidates have offered to compete for the Four Junior Scholarships to be awarded by the Board.

They are from the following Ordinary Schools:—

Christchurch St. Michael's	Ten Candidates-
Christchurch Wesleyan	Four "
Papanui St. Paul's	Four "
Rangiora School	Four "
Kaiapoi Church School	Three "

St. Luke's School	Two Candidates.
St. Alban's	Two "
Ashley Bank	Two "
Woodend School	One Candidate.
Lower Heathcote	One "
Lyttelton Church School	One "

Two of the Candidates appear to be above the limited age of eleven years, viz :—

From the St. Michael's School—

William White, aged 11 in May, 1867.

David Grant, aged 11 in April, 1867.

One from the Papanui St. Paul's School, will be 11 on June 15th 1867, *i.e.*, Oliver Thomson, from that School.

I have carefully assigned marks according to the relative proficiency displayed by the Candidates in their several examinations.

The following is the order of merit according to such separate examinations :—

John Allott Caygill, Christchurch Wesleyan School	...	132	Marks
James Parlane, Ashley Bank School	...	121	"
George Gordon, St. Luke's School	} Equal	...	116
Robert Triggs, Papanui St. Paul's			
Charles Jennings, Papanui St. Paul's	} Equal	...	105
William Heney, Kaiapoi Church School			
Walter S. Bean, Kaiapoi Church School	...	102	"
Alfred J. Merton, Rangiora School	...	96	"
Henry Ladbrook, Lower Heathcote (Ferry Road) School	...	94	"
Charles Piper, St. Luke's School	...	92	"
William Dixon, Ashley Bank	...	91	"
William J. Orchard, St. Michael's Christchurch	...	88	"
Burton Pye,	...	85	"
Oliver Themson, Papanui St. Paul's	...	80	"
Matthew Henry Thornton, St. Michael's, Christchurch	...	75	"
William Charles Bean, Kaiapoi Church School (7½ years old)	...	71	"
Isaac Arthur Winter, Papanui St. Paul's	...	67	"
William Prudhoe, Christchurch Wesleyan School	}	...	65
Mark Melbourne, Rangiora School			
Thomas Garnett Jenkins, Lyttelton Church School	...	63	"
Charles Mould, St. Michael's School, Christchurch	...	60	"
Arthur John Parson, Christchurch Wesleyan School	...	59	"
Joseph C. Prudhoe,	...	56	"
Charles Norton, Woodend	...	52	"
William H. Payne, St. Alban's, &c., Schools	...	51	"
John Scarvell, Rangiora School	...	46	"
Henry Allen, Christchurch St. Michael's	...	45	"
William Beken,	...	43	"
Albert Isles,	...	33	"
Frederic W. Bean, Rangiora School	...	33	"
Thomas Reader, Christchurch St. Michael's	...	25	"

The papers of the several candidates are respectfully submitted to the decision of the Board, together with a Scheduled Report upon the preliminary examination.

J. P. RESTELL,

Inspector of Schools.

May 29, 1867.

SCHEDULED REPORT ON CANDIDATES FOR JUNIOR SCHOLARSHIPS.

	List of Candidates.	Age, Last Birthday.	Bible.	Reading.	Spelling.	Writing.	Arithmetic.	English Grammar.	History.	Geography.	Total.	Length of Previous Stay at this School.
<i>St. Michael's, Christchurch.</i>												
1	William Beken	9 in Jan., 1867	2	7	16	15	0	1	2	0	43	Four years
2	William White	10 in May, 1866	3	12	18	6	15	2	15	0	71	Half-a-year
3	Charles Mould	9 in Dec., 1866	3	12	22	5	10	3	5	0	60	Over one year
4	William J. Orchard	9 in Mar., 1867	14	15	28	15	8	8	0	0	88	One year
5	Matthew H. Thornton	10 in Dec., 1866	4	14	20	12	15	8	0	2	75	Four years
6	Thomas Reader	9 in Dec., 1866	0	6	14	2	0	1	2	0	25	Two years
7	Albert Isles	9 in Dec., 1866	0	8	22	0	0	3	0	0	33	Four years
8	Burton Pye	10 in Oct., 1866	7	14	26	0	15	13	10	0	85	Five years
9	Henry Allen	10 in Jan., 1867	3	8	20	2	10	2	0	0	45	One year
10	David Grant	11 in April, 1867	Not examined; too old and backward.									
<i>Christchurch Wesleyan School.</i>												
11	John Allott Caygill	10 in Aug., 1866	12	18	28	15	15	10	14	10	132	Four years
12	Arthur John Parson	9 in July, 1866	5	9	28	9	0	8	0	0	59	Two years
13	Joseph C. Prudhoe	8 in Oct., 1866	2	15	20	5	10	4	0	0	56	A year and a-half
14	William Prudhoe	10 in Dec., 1866	3	13	22	8	10	9	0	0	65	A year and a-half
<i>Papanui (St. Paul's).</i>												
15	Robert Triggs	10 in Dec., 1866	12	13	28	15	15	17	10	6	116	Over four years
16	Charles Jennings	9 in Dec., 1866	11	12	22	15	15	18	10	2	105	About five years
17	Isaac A. Winter	10 in Aug., 1866	5	10	22	10	10	5	5	0	67	About five years
18	Oliver Thomson	10 June 15, 1866	8	20	20	12	10	5	0	5	80	A year and a-quarter
<i>Rangiora School.</i>												
19	Alfred J. Merton	9 in Oct., 1866	16	18	30	10	0	11	5	6	96	Five years
20	Mark Melbourn	9 in Mar., 1867	6	8	28	13	0	10	0	0	65	Four years
21	Frederic W. Bean	10 in May, 1867	6	8	8	5	0	4	2	0	33	Three years
22	John Scarvell	10 in Feb., 1867	7	8	14	11	0	6	0	0	46	Half-a-year
<i>Kaiapoi Church School.</i>												
23	William Heney	9 in Feb., 1867	8	15	24	10	25	18	5	0	105	Three years
24	Walter Stanley Bean	9 in Feb., 1867	8	13	28	10	25	11	5	2	102	Three years
25	William Charles Bean	7 in July, 1866	5	11	24	12	10	9	0	0	71	Three years
<i>St. Luke's School.</i>												
26	George Gordon	10 in Feb., 1867	12	18	20	10	15	12	15	14	116	One and a-half years
27	Charles Piper	9 in July, 1866	6	10	18	10	25	9	10	4	92	Three or four years
<i>St. Alban's.</i>												
28	William H. Payne	10 in Aug., 1866	9	10	16	7	0	7	0	2	51	Four years from school to school
29	Horace D. Pine	10 in Nov., 1866	Not examined; had left the school.									
<i>Woodend.</i>												
30	Charles Norton	9 in May, 1866	5	8	20	7	0	11	0	1	52	Four years
<i>Lower Heathcote.</i>												
31	Henry Ladbrooke	10 in May, 1867	9	12	30	12	25	6	0	0	94	A year and a quarter
<i>Ashley Bank.</i>												
32	James Parlane	10 in Nov., 1866	22	18	24	14	15	12	15	1	121	Two years
33	William Dixon	10 in Nov., 1866	15	8	0	9	25	14	15	5	91	Nearly two years
<i>Lyttelton Church School.</i>												
34	Thomas Garnett Jenkins	10 in Jan., 1867	2	12	24	12	10	3	0	0	63	About three years

BOARD OF EDUCATION,

JUNE 1—26, 1867.

SUMMARY REPORT FOR THE MONTH.

To the Honorable H. J. TANCRED, Chairman.

SIR,—I have the honour to submit a Summary Report, for the month, on the Schools and Candidates examined.

Ten Schools, including 271 children, have been examined.

Two Candidates have been examined :

Alexander Smyth, for the mastership of the Woodend School.

William O'Brien, for that of the Akaloa School, or other vacant appointment.

OF THE SCHOOLS EXAMINED :—

Rangiora Girls' ... June 3 ... Present, 28 ... Middling.
 Oxford School ... June 4 ... Present, 24 ... Middling.
 Ashley Bank ... June 5 ... Present, 26 ... Satisfactory; the attendance has improved, and the school has risen to a very creditable state of efficiency.

It is very gratifying to observe the interest now taken in their studies by several older youths, whose earlier education had suffered neglect.

Christchurch Roman

Catholic School ... June 7 ... Present, 67 ... The attendance was greatly reduced by the measles. The attainments of the children present shewed that great pains had been taken by the Master and Mistress.

Arowhenua School ... June 11 ... Present, 29 ... Considerably improved. Not enough books, &c., in use. The school-hours are *short*, and they do not appear to be strictly observed. There is a want of smartness in the change of lessons, and in the production of the books, slates, and pencils wanted in class.

Timaru ... June 12 ... The day very cold and wet. The attendance was consequently reduced one-half. The attainments of those present were highly creditable.

Waimate ... June 13 ... Present, 26 ... The attendance was a little below the average (30), owing to the cold and showery morning.

The progress from the commencement was satisfactory. The Chairman and another member of the Local Committee, present at the examination, expressed their satisfaction with the master. The provisions of the Education Ordinance appear to be efficiently carried out.

North Road ... June 18 ... Present, 11 ... Satisfactory.

The absorption of several small farms into grazing country is said to reduce the attendance.

Halswell ... June 20 ... Present, 18 ... Satisfactory.

Tai Papu ... June 20 ... Present, 19 ... Satisfactory.

I have the honour to be, Sir,

Your obedient servant,

J. P. RESTELL,

Inspector of Schools.

BOARD OF EDUCATION,

(QUARTER ENDING JUNE, 1867.)

SUMMARY REPORT OF INSPECTOR OF SCHOOLS.

To the Honorable H. J. TANCRED, Chairman.

SIR,—I have the honour, in obedience to your instructions, to submit a Tabular Summary of the quarterly returns as to attendance and payment; and a Schedule as to the efficiency of the schools examined.

It will be seen from the Tabular Summary of Quarterly Returns that, during the quarter, the number of attendants has been 2482, an increase of 359 upon the corresponding quarter of 1866; the average daily attendance 1494, an increase of 69; the school fees £824 4s. 11d., an increase of £48 3s. 9d.

It will be seen from the Schedule as to the efficiency of the schools, that the number examined during the quarter has been 28, including 1137 children. Several schools not examined, were visited for the purpose of taking the preliminary examination of the Candidates, for Junior Scholarships, and on other occasions.

I have the honour to be, Sir,

Your obedient Servant,

J. P. RESTELL,

Inspector of Schools.

BOARD OF EDUCATION, 1867,

QUARTER ENDING JUNE 30.

	List of Schools.	Number of Attendants.			Average Daily Attendance.			Amount of School Fees.		
		M.	F.	Total.	M.	F.	Total.	£	s.	d.
1	Christchurch, St. Michael's	120	44	164	65	26	91	48	11	0
2	„ Wesleyan	138	56	194	71	37	108	66	17	6
3	„ St. Andrew's	21	61	82	10	32	42	21	16	0
4	„ St. Luke's	65	58	123	22	25	47	27	19	0
5	„ R. Catholic	78	55	133	42	27	69	36	18	0
6	Lyttelton, Church England	47	36	83	35	21	56	35	5	6
7	„ Wesleyan	50	49	99	29	29	58	33	12	6
8	Governor's Bay	10	3	13	6	3	9	17	14	0
9	Kaipoi, Church England	41	26	67	31	18	49	26	17	6
10	„ Wesleyan	31	18	49	18	12	30	18	19	0
11	Woodend	25	26	51	17	19	36	16	19	6
12	Saltwater Creek	14	12	26	7	10	17	7	13	0
13	Leithfield	23	9	32	12	4	16	13	3	0
14	Ashley Bank	20	16	36	10	8	18	9	12	0
15	Rangiora, Boys'	74	0	74	55	0	55	26	17	0
16	„ Girls'	10	38	48	8	30	38	13	4	6
17	Fernside	12	15	27	11	13	24	4	1	0
18	Oxford	27	13	40	18	9	27	13	1	6
19	Eyreton	11	12	23	8	8	16	5	0	6
20	Courtenay	12	9	21	9	7	16	3	12	4
21	Akaroa	30	29	59	18	15	33	16	9	0
22	Pigeon Bay	27	9	36	24	8	32	16	4	0
23	Duvauchelle's	22	10	32	19	8	27	14	13	0
24	Okain's	17	16	33	13	13	26	12	0	0
25	Little Akaloa	7	7	14	5	5	10	7	0	0
26	Riccarton	25	35	60	18	20	38	21	15	0
27	Prebbleton	19	15	34	11	9	20	13	4	0
28	Templeton	17	12	29	11	6	17	3	16	6
29	Lincoln	22	14	36	11	8	19	13	4	6
30	Upper Heathcote, Lincoln Road	23	16	39	13	9	22	14	8	6
31	Halswell	19	11	30	12	6	18	12	1	0
32	Heathcote Valley	25	31	56	16	13	29	18	1	0
33	Lower Heathcote, Ferry Road	39	10	49	23	5	28	18	4	6
34	Avonside	38	21	59	26	12	38	22	18	6
35	Papanui, St. Paul's	67	58	125	35	29	64	39	13	6
36	„ Wesleyan	21	12	33	14	6	20	9	4	0
37	North Road	13	8	21	9	5	14	9	11	0
38	Harewood Road	23	11	34	14	7	21	12	0	6
39	St. Alban's	59	48	107	32	21	53	22	12	1
40	Arowhenua	21	19	40	12	12	24	22	13	0
41	Timaru	65	57	122	46	40	86	42	14	6
42	Waimate	21	28	49	13	20	33	18	3	0
		1449	1033	2482	879	615	1494	824	4	11

BOARD OF EDUCATION, 1867,

QUARTER ENDING JUNE 30.

SCHEDULE AS TO EFFICIENCY OF SCHOOLS EXAMINED.

	List of Schools Examined.	Date of Examination.	Number Present.	Site, Buildings, and Premises.	Books and Apparatus.	Organization and Discipline.	Bible Knowledge.	Elementary Secular.	Ordinary Secular.	REMARKS.
1	St. Michael's, Christchurch	Apl. 12	135	B	A	B	B	A	A	
2	Wesleyan "	" 9	144	B	A	A	A	A	A	
3	St. Andrew's "	" 30	58	B	A	A	A	A	A	
4	St. Luke's "	" 3	78	B	A	B	A	A	...	
5	Roman Catholic "	June 7	45	A	A	A	B	A	A	
6	Lyttelton Church of England ...	" 10	42	A	A	C	A	A	A	
7	Lyttelton Wesleyan ...	" 10	50	A	A	B	A	A	C	
8	Kaiapoi Church ...	May 22	39	A	A	A	A	A	A	
9	" Wesleyan ...	" 22	34	B	B	B	A	A	...	
10	" Roman Catholic ...	Apl. 29	18	B	A	A	B	A	...	
11	Leithfield ...	June 24	14	B	A	A	C	A	...	
12	Ashley Bank ...	" 5	26	A	A	A	A	A	A	
13	Rangiora, Girls' ...	" 3	28	B	A	B	A	B	...	
14	Oxford ...	" 4	24	B	A	A	A	B	...	
15	Akaroa ...	May 3	39	B	B	B	A	B	A	
16	Pigeon Bay ...	" 9	29	B	A	A	A	A	A	
17	Duvauchelle's ...	" 8	25	B	A	A	A	A	...	
18	Okain ...	" 6	30	A	A	A	A	A	A	
19	Little Akaloa ...	" 7	10	B	A	B	A	C	...	
20	Halswell ...	" 20	18	B	A	A	A	A	...	
21	Tai Tapu ...	" 20	19	B	A	A	A	A	...	
22	Heathcote Valley ...	Apl. 12	30	B	C	B	B	A	...	
23	Lower Heathcote ...	" 12	31	A	B	B	A	A	...	
24	Papanui, Wesleyan ...	" 4	40	B	B	B	A	B	...	
25	North Road ...	June 18	11	B	B	B	A	A	...	
26	Arowhenua ...	" 11	39	A	B	B	A	A	...	
27	Timaru ...	" 12 heavy rain	45	A	A	A	A	A	A	
28	Waimate ...	June 18	36	A	A	A	A	A	...	
			1137							

BOARD OF EDUCATION, 1867.

SUMMARY REPORT OF INSPECTOR OF SCHOOLS FOR THE MONTH. (JUNE 28—JULY 25.)

To the Chairman of the Board.

Sir,—I have the honour to submit a Summary Report on the schools examined during the Month.

Seven schools, including 191 children, have been examined, viz :—

Prebbleton School ... July 10 ... Present, 18 ... The school is progressing satisfactorily.

South Selwyn ... July 11 ... Present, 5 ... The attendance was reduced by the unfavourable weather and the impassable state of the roads.

Courtney... ... July 12 ... Present, 18 ... Satisfactory.

The Committee and the Parents take great interest in the school, many of them attending the examination.

Rangiora School... ... July 17 ... Present, 47 ... The youngest class of children, between 5 and 9 years of age, was unusually backward in reading. With this exception the school passed a very satisfactory examination.

Saltwater Creek School... July 28 ... Present, 20 ... The Arithmetic was inaccurate. The other subjects were satisfactory. There are not enough desks; only one, sufficient for seven children, of a wrong kind, and badly placed.

North Road School ... July 22 ... Present, 15 ... The new master, whose appointment waits the confirmation of the Board, appeared to be conducting the school satisfactorily. There was no fire in the school-room, a cold and gloomy one; there being no fuel on the premises. The former teacher had made a somewhat common mistake of removing his registers; and, hence, leaving no record of the attendance and payments of the Scholars during his Mastership.

Papanui St. Paul's School July 22 ... Present, 68 ... Satisfactory.

John Dobson, examined on the 9th instant, obtained a certificate of competency for the Mastership of the Cust District School.

William Taylor, formerly examined, has been certified competent for the Mastership of the Woodend School.

I have the honour to be, Sir,

Your obedient servant,

J. P. RESTELL,

Inspector of Schools.

BOARD OF EDUCATION,

(JULY 26—AUGUST 29) 1867.

MONTHLY REPORT OF INSPECTOR OF SCHOOLS.

To the Honorable H. J. TANCRED, Chairman.

SIR,—I have the honour to submit a Summary Report on the Schools examined and inspected during the month, and also to report the examination of the Candidate for a Mastership.

OF THE SCHOOLS EXAMINED AND INSPECTED,

St. Luke's School ... July 29 ... Present 78 ... The sound efficiency of the lower school, under the Mistress, shews that children under 9 years of age are capable of much more accuracy than they usually acquire in the Elementary and

and Ordinary Schools. The upper division of the School, under the Master, was on the whole satisfactory; the desks, however, are badly arranged, and the registers untidy and incomplete.

Christchurch Wesleyan School ... July 30 ... Present, 112 ... A very wet day. Ventilation still defective.

The School passed a very satisfactory examination, attaining a high average of accuracy.

Lower Heathcote School,
Ferry road ... August 5 ... Present, 15 ... Attendance reduced by measles and unfavourable weather.

The School-room wall is damp, the plasterwork holds the wet, and is, therefore, less suitable than wooden lining for school buildings.

NOTE.—Another objection to it is, that it soon gets out of repair, cracks and falls in cakes or blocks, sometimes endangering the children.

I regret to find that no notice has been taken by the School Committee of the warning from the Board as to the deficiency of furniture and apparatus. The necessity of these things is insisted on in the report for the month of April.

Two-thirds of the school, including all over six years of age, were unusually deficient in Reading, Spelling, Writing and Arithmetic.

St. Andrew's School ... August 5 ... Present, 53 ... The school was crowded, while most others have been thinly attended owing to the measles and the weather. The school-room is not large enough for the attendance.

The school children here are remarkably clean and orderly. They passed a very satisfactory examination.

Heathcote Valley School August 7 ... Present, 26 ... The school is still without Bibles. A black board and other apparatus are wanted.

The organization, discipline, and attainments are, as yet, far from satisfactory. But some excuse is afforded both by the frequent disrepair of the building, which suffers from almost every gale; and by the deficiency of proper apparatus.

St. Alban's ... August 8 ... Present, 28 ... A very cold day. The stove is not so placed as to give out much heat besides what escapes up the chimney. It is not large enough for this room, which is capable of comfortably accommodating 120 children. The lower part of the school was much more satisfactory than the upper, as to the attainments of the children. The copy-books of the elder children were not creditable, and their attainments generally were below the average. The master had recently resigned.

Riccarton ... August 12 ... Present, 30 ... The buildings and premises have been improved at a very considerable outlay, and are now in good order.

More desks are wanted, as there is at present only deskroom for 16 children.

The children are more orderly than they were, but their attainments in Elementary Knowledge are quite unsatisfactory. They have learned to read *badly*, and are unable to spell such words of ordinary difficulty as are found in the first pages of the several books set down for them in the Teacher's programme. This fault pervades every class in the school. There seems to have been *too much* reliance on a fanciful method called the "Phonic" system.

The Writing and Arithmetic were more satisfactory.

Upper Heathcote School August 13 ... Present, 27 ... Satisfactory.

North Road School ... August 14 ... Present, 19 ... New Teacher.

Eyreton School ... August 19 ... Present, 11 ... The floods in the Eyre kept away some children, and a funeral some others. Those present passed a very satisfactory examination.

Cust School ... August 20 ... Present, 17 ... Recently commenced under a new Teacher. Sufficient desks and fittings in the schoolroom. The Chairman was about to obtain a liberal supply of books and apparatus.

Oxford Church of England School ... August 20 ... Present 30. Satisfactory, except as to the copy books.

Proposed Harewood School at Oxford ... August 20 ... Present, 24 ... Being aware of an application for aid to this school, I visited it while in the neighbourhood.

It is situated about one mile from the Oxford School in a direct line, or about one mile-and-a-half by the road. A new road, lessening the distance, I believe, is being made.

The school is conducted in a Chapel, built in a T square shape; the average dimensions being about 33 x 43, or 15 x 32 in the cross piece, and 18 x 11 in the stem, *i.e.* in the older part of the building. The whole space may be used advantageously if requisite; but the shape is an undesirable one, because the teacher cannot command a view of all his pupils from every part of the room.

It is well aired, warmed and lighted. There is a sufficiency of desks and fittings. The children are remarkably clean and orderly.

The teacher's daughter assists her father in the school; and four of his younger children attending, impart a superior tone and an example of neatness and order.

Fernside School ... August 21 ... Present, 29 ... New Teacher.

Rangiora Girls' School ... August 21 ... Present, 31 ... Much improved. The registers, both here and at the Rangiora Boys' School, are incomplete as to three columns required by the Board in Circular of Dec. 8, 1866, *viz.*, the "ages of children," "length of stay in school," "school-days present."

As both the Teachers promise to keep these items for the future, I would deprecate any action of the Board until after my next visit.

Woodend School... August 22 ... Present, 23 ... New Teacher. The school has suffered from the measles and the weather, and from an interval previous to the appointment of the present Master.

Kaiapoi Church School... August 23 ... Present, 60 ... Satisfactory on the whole, though less accurate than usually among the junior classes in the middle of the school.

Kaiapoi Wesleyan School August 23 ... Present, 30 ... Much improved.

Christchurch, St. Michael's August 27, 28 Present, 110 ... Much improved, especially as to writing, neatness, and accuracy in Arithmetic; but not realising what might be expected from a staff of three adult teachers to this number of children.

Further details of each examination are entered in the Journal.

Ebenezer Long was examined on the 16th August, as a candidate for the mastership of the St. Alban's School, as per certificate of that date.

I have the honour to be, Sir,

Your obedient servant,

J. P. RESTELL,

Inspector of Schools.

BOARD OF EDUCATION,

(AUGUST 30—SEPT. 26, 1867.)

SUMMARY REPORT OF INSPECTOR OF SCHOOLS FOR THE MONTH,

To the Chairman of the Board.

SIR,—I have the honour to submit a Summary Report on the Schools examined during the Month, together with a full Report on the Lyttelton High School, and a full Report on the proposed Gray Cross School.

Lyttelton High School, examined...Sept. 11 & 12...Present, 75...The school is situated on a quarter-of-an-acre of land, opposite the Presbyterian Church in Winchester Street.

The school-room, 42 x 20, is lofty, airy, lined with boards, and sufficiently warmed and lighted. The windows are on both sides and at one end, but sufficiently high in the walls, and not injurious to the sight.

The premises are enclosed by a good fence, and are in a satisfactory condition as to drainage and other matters.

There is a liberal supply of good school furniture, fittings, globes, maps and apparatus. The children purchase at moderate prices, text-books for their own use, and are kept well supplied with them.

The school is conducted by a Head Master and an Assistant. It comprises ninety children of both sexes. They are divided into seven classes, with a liability to a different classification according to excellence or deficiency in particular subjects.

The *average* is a fair approximation to the *total* attendance; it being, as I am informed, above 75, the number present on the days of examination. This is better, as a comparative *average*, than that of the *Ordinary* Schools generally; but below that of other *Superior* Schools.

Out of the 75 scholars present, 29 were girls. The girls occupy the back desks, the boys the front ones, all facing the Masters.

No disadvantage has hitherto resulted from this mixed character of the school; on the contrary, mutual benefit results to both classes of children. It is not easy to prove how much the different characters may have benefited by a reciprocity of counteracting influences; but it is quite patent that, *in this school*, and generally, the girls make better progress than when taught in separate schools by a mistress; and the progress of the boys is not hindered by them.

As to the attainments of the school, the pupils have a fair general knowledge of the Bible and of ordinary secular subjects. In addition to this, a few boys are commencing higher subjects, with some view of competing in future scholarship examinations. But the teachers decline to teach higher subjects to pupils who are not likely to remain long enough in school to make any considerable progress in them. And there seems to be a greater demand for a *practical* and *commercial* course of instruction for the children attending this school.

The Latin of the three boys learning it is at present limited to the First Declension and exercises upon it. I think that "Henry's First Latin Book" would ensure a sounder grounding in the rudiments, and with a less cumbrous course than the book in use.

Two girls are construing French Fables, but are not well grounded in the Grammar. One of these girls, Margaret Reston, has acquired a good idea of the pronunciation; the other is less proficient in it.

One boy is in the first book of Euclid, and as far as Division in Algebra.

The Reading and Spelling of the several classes throughout the school evince careful teaching; these subjects afford, as they should, a result superior to that of the generality of "*Ordinary*" Schools; but do not quite equal my expectation. I have no doubt that, if more accustomed to inspection, a greater number of children in the junior classes would obtain good marks for *intelligence*, *expression*, and *correct punctuation* in Reading.

The highest class, consisting of six boys and six girls, of ages from eleven to fourteen, read and spelled remarkably well; the girls excelling both as to *intelligence* and *expression* in Reading, and as to accuracy in Spelling—the reading of Margaret Reston being especially commendable, and also the accuracy of Mary Stout and Agnes Grubb in Spelling.

The Writing is carefully taught, and the copybooks are remarkably neat.

The Arithmetic comprises some knowledge of the higher and commercial rules by the first class, together with a fair average of accuracy throughout the school, up to the Compound Rules and Reduction. In this subject John Pope, senior, was remarkably proficient and expert; Margaret Reston, Agnes Grubb, and Roger Tucker also merited high commendation.

The History of the British Empire (Collier's) is read by the highest class with a tolerably satisfactory result, although they have not yet acquired a comprehensive knowledge of the subject. None of the more advanced pupils were able to write an exercise on either "*The Feudal System—its introduction, influence, and decay in England*," or on "*The Origin and Growth of Parliamentary Power*;" but several wrote creditable accounts of the Reformation, great Rebellion,

Restoration, and Revolution, besides answering about one-third or one-fourth of fifty promiscuous questions—the result being above the usual average.

The Geography comprised a fair general knowledge of the subject; and throughout the school, even to the youngest classes, a remarkably good knowledge of the Geography of New Zealand. The subject is taught both *orally* and with books, and greatly interests the children. Several Maps were drawn from memory, but they rather shewed a general knowledge of the “*lie*” of the countries than any accuracy of outline.

The highest number of marks in History and Geography was obtained by Mary Stout.

English Grammar has been carefully taught to the senior classes. The Parsing is more rational and less mechanical than in most schools.

English Composition does not appear to have been systematically taught, but was tested in connection with the written exercises in Bible Knowledge and English History.

The school is decidedly the best in Lyttelton of those aided by the Board. It cannot rank high among the “*Superior Schools*,” but it has a higher standard of efficiency and attainment than the “*Ordinary Schools*.”

It has been faithfully and successfully conducted for the past three years by Mr. Ross and a change of assistants.

Report on the Gray-Cross School, visited Sept. 5. Present, 10. The school is situated about a mile and a-quarter north of Weeden’s Hotel, on a junction road called the Courtney Road, leading from the South Road to the West Coast Road.

It is conducted by a former master of the Lincoln School, in a sod-hut, about 21 by 10, with walls about six feet high, and a thatched roof. There is no fire-place, chimney, or other means of warming and airing the room. These defects were noticeable on account of the dampness of the walls, and the unpleasant closeness of one end of the room. It is much too narrow, and otherwise unfit for a school-room.

The country round is dotted with farms and homesteads, and I should hence infer that, with a proper School-room and a low rate of fees, an efficient teacher would secure a good attendance. The children pay 1s. a week.

There are forms enough to seat the children, and one ill-contrived *vis-a-vis* desk for six.

There is a want of proper books and apparatus.

Some very intelligent children here shewed that, although they had been without a school, their education had not been neglected.

All that has at present been done towards the establishment of a school is the result of the voluntary effort of a few residents, to provide at least a temporary school for their children. I am informed that one gentleman has offered an acre of land for a site, and a contribution of £20, towards the erection of a school.

Of the Ordinary Schools examined—One (the Okain’s Bay School), is highly commendable as to the result of the examination; Eight are satisfactory; Four, moderate, and One (the Akaroa School), unsatisfactory.

LIST OF SCHOOLS EXAMINED.

Papanui Wesleyan	...	August 30	...	Present, 30	...	Improved.
Avonside School	...	Sept. 2	...	Present, 45	...	Satisfactory.
Roman Catholic	...	Sept. 3	...	Present, 75	...	Satisfactory.
Templeton	...	Sept. 5	...	Present, 27	...	Moderate. The School-room might be cleaner, but at present is used for Sunday services, Drill-shed, &c.
Organization imperfect at present; improvements were suggested as to management of the classes. The school requires more frequent visits of inspection.						
Lincoln	...	Sept. 6	...	Present, 29	...	Moderate.
Tai Tapu	...	Sept. 6	...	Present, 31	...	Satisfactory.

Halswell School ... Sept. 6 ... Present, 22 ... Moderate.

Attainments and efficiency below the average, the course of instruction not equable, owing to a tendency to over-cultivate particular branches of study.

Lyttelton

Church School ... Sept. 13 ... Present, 56 ... Satisfactory.

Lyttelton Wesleyan School, Sept. 13 ... Present, 56 ... Satisfactory.

Governor's

Bay (Gebbie's Flat) Sept. 14 ... Present, 9 ... Satisfactory.

Akaroa School ... Sept. 17 ... Present, 37 ... Unsatisfactory.

The school had suffered interruption from a very severe winter, and since that from the bad state of the roads, but not sufficiently to account for the unsatisfactory result of the examination. The Bible Knowledge and the Arithmetic are but moderate, and the Reading and Spelling throughout the school are inaccurate, few children having obtained good marks. In the first or highest class of nine children, of the average age of nearly 12 years, only one boy made less than 19 mistakes in the Spelling exercise of twenty-four words of ordinary difficulty.

Okain's Bay School ... Sept. 18 ... Highly commendable.

The school appears to have been taught with a constancy of unflagging energy and attention.

The result is the fair measure of accuracy of all the classes in the ordinary subjects, and a good understanding of Grammar, Parsing, and of the structure and analysis of sentences. The average of accuracy in Arithmetic was also above that of the other Ordinary Schools. The Spelling of the junior half of the first class only was below the average.

Duvauchelle's Bay School Sept. 19 ... Present, 27 ... Moderate. The school has been interrupted by weather, landslips, and bad roads. The registers were unsatisfactory as to certain columns, to which I had drawn the Master's attention at my former visit. The attainments were satisfactory, except the Arithmetic and Spelling, which were below the average; but not so bad as at another school complained of as *unsatisfactory*.

Pigeon Bay School, Examined Sept. 19, 20 ... Present, 34 ... Very satisfactory. An excellent Day and Boarding School. It is important to observe how much benefit accrues to the Day School from the Boarding School. This result is owing, first, to the good attendance secured by the Boarding School; and thence to the good discipline and higher standard of the boarders stimulating the progress of the day-scholars. (A somewhat similar result is exemplified by the Papanui and Rangiora Schools.) The higher standard of attainment and the average accuracy being fairly proportionable to the advanced age and regular attendance of the pupils, the result of the Pigeon Bay School examination is satisfactory.

I have also visited the Kaiapoi Roman Catholic School in passing. The want of a stove complained of after my former visit has been rectified. The school-buildings, satisfactory.

I have also examined one candidate for an appointment, as per Report of the 24th inst.

The details of the School Examinations are entered in the Journal.

I have the honour to be, Sir,

Your obedient Servant,

J. P. RESTELL,

Inspector of Schools.

BOARD OF EDUCATION.

QUARTER ENDING SEPTEMBER 30, 1867.

SUMMARY REPORT OF INSPECTOR OF SCHOOLS.

To the Hon. H. J. Tancred, Chairman.

SIR,—I have the honour to submit, together with a Report for the above quarter, a Tabular Summary of the Quarterly Returns, and a Schedule as to the efficiency of the Schools examined.

It will be seen from the Tabular Summary that, during the quarter, the gross number of attendants has amounted to 2431, an increase of 139 upon the corresponding quarter of 1866; while, owing to the severity of the winter, the prevalence of measles, and the general depression, the average has fallen off to a daily attendance of 1478—a decrease of 81, and the gross amount of school-fees paid (and in arrears) to £791 7s. 2d.—a decrease of £22 17s. 11d.

As compared also with the preceding quarter of the current year, there has been a general decrease in the attendance, owing to the same causes.

From the schedule as to their efficiency, it will be seen that the number of Ordinary Schools examined has been 40, including 1464 children; or, taken together with 75 in attendance at the Lyttelton High School, and 10 at the proposed Gray-Cross School, forming a total of 42 schools, and 1549 children examined during the quarter.

I have much pleasure in reporting the generally satisfactory state of the schools as regards their suitable sites, buildings, and premises; the sufficiency of the furniture, fittings, apparatus, and books; and the fair attainments of the children as proportioned to the teaching power.

With regard to the sites, these being generally well-chosen with reference to the surrounding population, there is but little to say about them; but the growth of population further from the original centres has raised a question, in one or two instances, whether the wants of the district can be better supplied by removing the old school or by establishing an additional new one.

I propose here to specify the more satisfactory school-buildings, while reference to the Schedule and the Monthly Reports will sufficiently indicate those less satisfactory. The Lyttelton Church of England and the Christchurch Roman Catholic Schools are costly structures, lofty and spacious rooms, pleasant and airy, sufficiently warmed and ventilated. The Christchurch St. Michael's and the Halswell School are but second to these, and they have the additional advantage of commodious dwellings for the teacher, and room for the accommodation of boarders. Waimate and Timaru have also fine school-rooms, in which, however, too much having been lavished upon architectural effect, very insufficient space has been left in the teacher's dwelling; and there has been no thought of provision for boarders from the remote part of the districts. Schools of such dimensions each require an experienced master and mistress, for whom and their families very miniature dwellings are quite inadequate. In all of the four last-named schools, disadvantages result from the dwellings being attached to the school-rooms.

Where they are under adjacent gable-roofs, the water, from heavy rain or hail-storms, collects in the gutters and penetrates into the buildings. But in any case where the buildings are attached, the school is liable to interruption from domestic causes, and the buildings affect each other's ventilation.

The buildings erected since the Report of the Education Commission of 1863, and in accordance with its suggestions, are mostly of a less pretentious character, yet thoroughly convenient both as schools and dwellings.

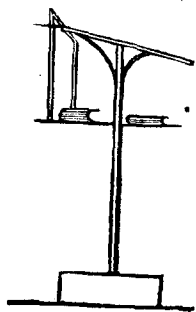
Such schools as any of those above-mentioned or referred to are generally classed as A in the Schedule; but B has been sometimes used to signify that, although the school-room is good enough as a structure, yet that either the buildings do not comprise a dwelling for the teacher, or that they are otherwise inadequate to the wants of the district in size, comfort, or in other respects.

As stated in the commencement of this report, the schools generally are well supplied with fittings, apparatus and books; and there is an evident desire, among the local committees, to provide whatever is essential to the efficiency of the schools and the welfare of the children. But the convenience and usefulness are in many instances lessened by the introduction of materials required for secondary uses of the school-room; and also by a different arrangement of the desks and benches for such uses. In Chapel Schools the rooms are liable to be upset two or three times every week for services, meetings, and Bible-classes, which, however profitable in themselves, nevertheless interfere with the use of the rooms for school purposes; for either much time is lost in re-arrangement, or the proper arrangement is sacrificed to one more adapted to other uses. Such schools seldom gain much by enlargement; for that is immediately followed by a proportionate addition of unwieldy benches, or of other church furniture unavailable for school uses. School-rooms are also liable to be used as reading-rooms, mechanics' institutes, drill-sheds, and for theatricals and concerts; for any of which purposes additional furniture and appliances are sometimes introduced. All such uses lessen the legitimate benefit of the school-room, although this loss *may* be compensated by other advantages.

A model school in each of the large towns of the province is still a desideratum. It is difficult to instance in either Christchurch, Lyttelton, or other towns, a school exemplifying the experience of the Royal Commission on Education as to school-organization.

With fewer drawbacks than the rest, and with an organization and classification of a more permanent and less shifty character, the Christchurch Wesleyan School, perhaps, more nearly approximates to this standard. It is certainly the one in which, in addition to the liberality of its friends, the energy of successive teachers has helped to make it a good example of a school well stocked with apparatus, maps, diagrams and charts. But the newer schools, in country Educational Districts, *mostly* afford the best examples of good internal arrangements, and of a liberal supply of suitable requisites *at the cost of the residents*.

A few old schools still suffer from the use of ill-contrived and awkward desks. The *new* desk is preferable—*i.e.*, a desk of the dimensions required by the Board, with the addition of an open book-board underneath, and with slits at the back through which to pass each slate, letting one end rest on the book-board below, the top of each slate projecting so as to be drawn out at once when wanted. This plan economises time otherwise lost in collecting and distributing slates.



In some schools too much space is occupied by a large table, at which the master sits while the class standing or lounging around screen the rest of the pupils from view. A small table or teacher's high desk is sufficient; but none at all is almost preferable, for an energetic teacher's place is on his legs, and from class to class, about the room.

Book-shelves and cupboards are a valuable addition to the fittings of a good school-room; they help to supply the teacher with a place for everything, and thence to keep everything in its place.

With a few exceptions, every school has a clock, the necessity of which is obvious to every teacher who understands his work, and desires to fulfil it with fidelity and punctuality.

A fender is an essential to every schoolroom. Most schools have at least such an one as will keep ashes and embers from falling out and rolling on the floor. In addition to this, a bar of bent iron, resting about two feet above the ground in front of the fire, would help to prevent the chance of children, left in school during dinner time, burning their clothing.

A stove is, perhaps, the best means of warming a schoolroom, except that it renders the air too dry; but that may be remedied by allowing a little water to evaporate from a vessel placed near the heat of the stove.

ORGANISATION AND DISCIPLINE.

School Organisation is divisible into two heads; *external* arrangements by the Local Committee and other authorities; and *internal* by the teacher, subject to the former.

The *external organisation* relates to the work of the promoters, in the establishment and government of the school.

The *internal organisation*, relating to the work of the teacher in his school room, is more intimately connected with school discipline, and more particularly concerns this report.

The duties of the teacher, in this respect, are:

- The best arrangement and disposal of the appliances at his command, according to generally established principles and local rules.
- The proper classification, or subdivision of the school into classes, according to the number of children, and the instruction of which they are collectively and respectively capable.
- The equable allotment of his time, as to the subjects of instruction, and the number of classes, and according to a suitable time table.
- The acquirement and maintenance of a punctual and regular attendance of orderly children; and a correct account of the same.

Such schools as—having suitable appliances, and efficient teaching power—have been enabled to secure a good attendance, are capable of becoming good models of internal organisation. These combinations are, however, very rare; and hence the difficulty of exemplifying a well-organised school. The two former of the above conditions are essentials to the latter; but an attendance well proportioned to the number of children who should attend school, in the district, depends upon other causes, the chief of which are, the lively interest and judicious management of the Local Committees in the external organisation.

And this is most effective where a yearly election, from among themselves, of persons to serve on the Local Committee enlivens public interest, and opens matters affecting the welfare of the school to the periodical discussion of the community. Great advantage also results from the monthly Committee Meetings held, as at Courtney and elsewhere, to consider the wants, progress and condition of the school; and to receive any suggestions or reports from the teacher.

School hours, vacations and fees, so adapted to the circumstances of the district as to help to secure a good attendance, are essential; for, irregular attendance hinders good organisation. It disconnects the course of instruction; and thus is not only injurious to the absentees, but also to their more regular classmates. Such irregularity is a painful and dispiriting clog to every efficient teacher, while it affords a plausible excuse to the inefficient, who readily confuse the cause and consequence of it.

There is happily little to be said against the present school hours and vacations. The hours are fairly adapted to the requirements of both the teacher and the children. Dulness rather than greater progress results to both, if the school day is protracted. A long interval in the middle of the day unfits children for their afternoon work in hot weather; and makes it too late for country children to return home in winter.

The vacations are also, for the most part, well-timed and not too long. It is important to avoid, in them, both the frequency and the length, which dissatisfy parents and break up the interest of the pupils. The vacations generally amount to about six weeks in the year, and in agricultural districts the longer vacations occur at harvest time.

With regard to the effect of the school fees upon the attendance; it appears that weekly fees, even when allowed to run into heavy arrears, are disadvantageous; for interruptions of a day or two, from weather and other circumstances, often cause the children to be detained at home for the remainder of the week; and even for longer periods, after the interest in the school has become broken by irregularity. Inability to pay arrears, and unwillingness to increase them, also cause parents to keep children from school. Daily fees would obviously render the attendance more casual than weekly ones. So far as the fees affect it, a more regular attendance might be secured by a rule of quarterly entrance, and a low quarterly rate of fees; any fraction of a quarter to be chargeable for the whole quarter, and the fees payable in advance.

The value of children's labour is, however, a more real cause of the detention of children from school at long intervals, and frequently at an early age, than in any consideration of the cost of fees.

While the efficiency of his school is the result of the good organisation and discipline of a competent and careful teacher, inefficiency is the result of an unsystematic and negligent course.

Defective organisation and discipline result from neglect of rules ; from work done upon impulse rather than on principle ; from the capricious cultivation of special subjects and pupils, to the neglect of others, either equally or more important. Their characteristics are alternations of laxity and severity ; of high pressure work and exhaustion ; of burning energy and supineness ; of excessive silence and disorderly work ; of brilliant results and fluctuation ; and a standard of attainment below the average, yet excelling in some subjects, while falling far short in others.

Next to the general aspect of a schoolroom, the Time-table, the Registers and the Copy Books, are the best indications of the good or bad organization of a school ; if these be neat, and shew traces of the teacher's care and punctuality, the case is hopeful and encouraging ; but if otherwise, further examination, although a painful duty, is scarcely necessary.

A well-digested Time-table, adapted to the wants of the school, indicates the energy and perseverance of the teacher ; an unsuitable Time-table, or a slovenly one, or the absence of one, are the reverse indications.

In the school-register, the steadiness of the attendance, borne out by facts, as often coincides with a steadfast fulfilment of duty as it varies with the reverse of it. The absence of pupils satisfactorily explained, indicates the discipline. The neatness, accuracy, and fidelity with which the registers are kept, are a criterion of character. Habitual negligence in registration conduces to incorrect and fallacious returns. Want of punctuality as to the daily registration of attendance destroys the reliability of the registers, and of the returns made up from them. Neglect of the daily, weekly and other totals, tends to baffle inspection, and causes that accumulation of work, at the end of the quarter, under the hurry of which there is a constant liability of unintentional mistakes in the returns.

A mistaken idea about the "number on the books" often causes a discrepancy in the Quarterly Returns. This number can only include those who have been present at all during the quarter. To include more names swells the *gross attendance*, increases its disproportion to the *average daily attendance*, and *ostensibly* affords a very unsatisfactory result.

It would much conduce to correctness in the registers and returns if the registers were inspected and countersigned at monthly or other periodical meetings of Local Committees.

ATTAINMENTS.

There is considerable improvement in both Biblical and Secular Knowledge.

The former is much more generally diffused than when it was first brought under Government inspection ; even the youngest children know the first and most important truths of Bible History.

In testing the improved accuracy in Secular Knowledge, more stress has been laid upon the sound knowledge of rudiments than upon an extensive acquaintance with each subject. It is to be hoped that the greater care taken by Teachers to correct early errors, and generally to ensure greater accuracy in the onset, will tend to a more intelligent knowledge, and, consequently, to a better recollection, of each subject taught.

To criticise the merits and defects would needlessly lengthen this report. It may suffice to say that the course of instruction given in the schools ensures to every regular attendant of ordinary ability a sound knowledge of those things most desirable for him to know by the time it is proper for him to leave school. The sum of these attainments to ordinary pupils will be a good general knowledge of the truths of Sacred History ; a capability to read every-day English with tolerable ease, fluency, and expression, and with a freedom from the grosser defects of diction ; to spell correctly words of ordinary difficulty ; to write a bold, legible hand, capable of rapid improvement, and of a ready adaptation to commercial or other pursuits ; to understand the *principles*, and to work rationally and correctly, the Arithmetical *rules*, up to Rule of Three and Practice ; a general knowledge of the *outlines* of Geography, with a more particular acquaintance with that of England, and possibly of the United Kingdom and the Australian Colonies ; a knowledge of the *outlines* of English History ; and perhaps a transient and imperfect knowledge of English Grammar.

This standard is exceeded by a very few pupils who leave the Ordinary Schools at or after twelve years of age. Few even attain to it. Most fall far short of it, from the early age at which they leave, and from their very interrupted course of attendance.

The schools which have exceeded this very moderate standard are identical with those which have attained a higher average of accuracy according to a *numerical test* in the subjects most capable of one.

The same examples in Arithmetic, inclusive of the compound Rules, having been offered to the whole school in every instance, and the same exercise in difficult spelling to at least one-fifth of each school ; the higher averages of accuracy have been attained in nearly the following order :

The Pigeon Bay School, The Okain's Bay School, The St. Paul's, Papanui, The Christchurch Wesleyan, and the Rangiora School.

Some of the other schools which usually do remarkably well, had suffered more than the rest from the prevalence of measles during the quarter.

Before concluding this report it is important to notice the fact that the competition for scholarships has had a beneficial effect even upon the unsuccessful candidates, and also upon their classmates.

The standard fixed has also aroused the parents and friends of pupils to a consciousness of what their own children, of the same or a greater age than the candidates, ought to be able to do.

With regard to the boys themselves holding Canterbury Scholarships, generally known as 'The Government Scholars;' their progress appears to be as satisfactory as the circumstances of the "Ordinary Schools" will permit. Those at Papanui have, I believe, received the unremitting care and attention of Mr. Mayo; and Merton, at Rangiora, has continued under the equally careful tuition of his father. They may not all have yet reached the maximum standard of their respective schools; but the elder ones are at the head of them, and are capable of greater progress in competition with classmates of a higher standing, and in schools of a higher order, than in their present schools, where the constant influx from the lower classes *limits* the progress of the more advanced pupils. It would be unjust to the rest of the school to devote time to the instruction of the scholars themselves in a separate class. And the time required for the instruction of the rest of a large school leaves the scholars too much occupied by themselves in a mechanical course. Instruction out of the ordinary school hours, and by either a tired teacher, or by one of multifarious pursuits, is too inefficient and desultory to be profitable, even supposing a teacher, long unpractised beyond a certain routine, to be competent to give instruction in a higher course.

Merton, Caygill, and the two Wilkinson's, are capable of acquiring both a more rational view, and a more comprehensive grasp of the ordinary subjects, than their present course affords. They are also as fit as any boys of their age to begin Latin, Algebra, and Geometry.

Jennings, Triggs, and Ladbrook, may possibly derive more benefit by continuing at Papanui, until they are better grounded in Elementary Knowledge.

It is much to be regretted that the parents of one boy holding a scholarship have sacrificed the same for the sake of earnings, which it would have covered, while defraying his education at one of the High Schools.

I have the honour to be, Sir,

Your obedient Servant,

J. P. RESTELL,

Inspector of Schools.

BOARD OF EDUCATION, 1867,

QUARTER ENDING SEPTEMBER 30, 1867.

TABULAR SUMMARY OF ATTENDANCE AND PAYMENTS.

	List of Schools.	Gross Number of Attendants during the Quarter.			Average Daily Attendance.			Amount of School Fees.		
		M.	F.	Total.	M.	F.	Total.	£	s.	d.
		1	Christchurch, St. Michael's	120	41	161	66	28	94	52
2	„ Wesleyan	131	63	194	85	40	125	61	0	6
3	„ St. Andrew's	20	60	80	12	36	48	28	14	0
4	„ St. Luke's	69	53	122	31	26	57	38	14	0
5	„ R. Catholic	84	54	138	52	26	78	39	3	9
6	Lyttelton, Church England	44	31	75	27	13	40	25	17	0
7	„ Wesleyan	44	39	83	26	22	48	21	14	0
8	Governor's Bay	9	3	12	5	2	7	16	15	0
9	Kaiapoi, Church England	48	35	83	33	21	54	25	18	0
10	„ Wesleyan	29	16	45	17	10	27	16	12	0
11	Woodend	24	26	50	13	16	29	14	5	3
12	Saltwater Creek	11	13	24	9	11	20	10	15	0
13	Leithfield	24	7	31	12	2	14	11	10	0
14	Ashley Bank	16	10	26	9	5	14	7	2	0
15	Rangiora, Boys'	60	0	60	45	0	45	22	6	0
16	„ Girls'	11	37	48	5	30	35	11	11	0
17	Fernside	17	23	40	15	17	32	10	3	6
18	Cust	11	9	20	7	6	13	4	14	0
19	Oxford Church of England	25	13	38	17	8	25	12	14	0
20	Oxford and Harewood	15	17	32	11	13	24	11	9	6
21	Eyreton	12	11	23	8	8	16	5	0	0
22	Courtney	10	9	19	9	8	17	5	10	3
23	Akaroa	22	28	50	14	12	26	16	14	3
24	Pigeon Bay	25	12	37	22	9	31	15	18	0
25	Duvauchelle's	22	10	32	12	5	17	10	15	0
26	Okain's	17	16	33	14	13	27	12	2	6
27	Little Akaloa	0	0	0	0	0	0	0	0	0
28	Riccarton	22	35	57	17	12	29	17	4	6
29	Prebbleton	14	15	29	8	9	17	9	18	0
30	Templeton	26	13	39	14	5	19	6	10	0
31	Lincoln	22	17	39	11	7	18	11	8	6
32	Upper Heathcote	19	16	35	11	7	18	12	3	0
33	Halswell	21	11	32	16	8	24	15	17	0
34	Tai Tapu	19	24	43	14	14	28	17	16	0
35	Heathcote Valley	24	24	48	16	9	25	14	5	10
36	Lower Heathcote	27	4	31	15	2	17	11	12	0
37	Avonside	47	21	68	24	11	35	21	1	6
38	Papanui, St. Paul's	60	44	104	48	27	75	34	6	0
39	„ Wesleyan	25	10	35	11	4	15	7	15	0
40	North Road	18	12	30	12	7	19	10	4	0
41	Harewood Road	23	6	29	12	5	17	11	11	0
42	St. Alban's	60	34	94	30	10	40	15	10	10
43	Arowhenua	13	17	30	10	13	23	16	0	0
44	Timaru	56	42	98	41	30	71	34	14	0
45	Waimate	17	17	34	12	13	25	13	13	0
		1433	998	2431	898	580	1478	791	7	2

BOARD OF EDUCATION, 1867,

QUARTER ENDING SEPTEMBER 30TH.

SCHEDULE AS TO EFFICIENCY OF SCHOOLS EXAMINED.

No.	List of Schools Examined.	Date of Examination.	Numbers Present.	Site, Buildings, and Premises.	Books and Apparatus.	Organization and Discipline.	Bible Knowledge.	Elementary Secular.	Ordinary Secular.	Remarks.
1	Christchurch— St. Michael's	Aug. 26 & 27	110	A	B	B	B	A	B	Improved; a few more maps wanted; registers deficient.
2	Do Wesleyan	July 30	112	B	A	A	A	A	A	Defective ventilation.
3	Do St. Andrew's	Aug. 5	53	B	A	A	A	A	A	Schoolroom too small for the number.
4	Do St. Luke's	July 29	78	B	A	B	B	A		Bad arrangement of desks; registers untidy and incomplete.
5	Do R. Catholic	Sept. 3	75	A	A	B	A	A	B	Good, but noisy.
6	Lyttelton Church of England ...	" 13	56	A	A	A	B	A	B	Improved.
7	Do Wesleyan	" 13	56	A	A	A	B	A		Remarkable accuracy, resulting from constant carefulness.
8	Governor's Bay	" 14	9	B	A	B	A	A		First class absent.
9	Kaipoi Church of England ...	Aug. 23	60	A	A	B	A	A	A	
10	Do Wesleyan	" 23	30	B	A	B	A	A		Improved.
11	Do R. Catholic	" 23	12			not examined.				Buildings now satisfactory as to ventilation and warming.
12	Woodend	" 22	23							Measles. New Teacher.
13	Saltwater Creek ...	July 18	20	B	C	B	A	B	A	Only one desk, wrong kind, and badly placed. Arithmetic bad.
14	Rangiora Boys' ...	" 17	47	A	A	B	B	A	A	Register very incomplete; lowest class, including children up to nine years old, unusually backward.
15	Do Girls' ...	Aug. 21	31	B	B	B	A	B		Register as above.
16	Fernside	" 21	29	A	A	B	A	B		
17	Cust	" 20	17	B	A					New School.
18	Oxford	" 20	30	B	A					New Teacher.
19	Do Harewood ...	" 20	24	A	B	A				First casual visit, clean, orderly, carefully taught.
20	Eyreton	" 19	11	A	A	A	A	A		Children very young, but remarkably well informed.
21	Courtney	July 12	18	A	A	B	C	B		Very deficient in Bible knowledge.
22	Akaroa	Sept. 17	37	B	A	B	B	C		Not satisfactory.
23	Pigeon Bay ...	19 & 20	34	B	A	A	A	A	A	
24	Duvauchelle's Bay	" 19	27	B	A	B	A	B		Register incomplete.
25	Okain	" 18	33	A	A	A	A	A	A	
26	Riccarton	Aug. 12	30	A	C	B	A			Not enough desks; want of system; the instruction of the junior classes has been quite "haphazard."
27	Prebbleton	July 10	18	A	A	A	B	B		Improving.
28	Templeton	Sept. 5	27	A	C	C	C	C		Very deficient at present.
29	Lincoln	" 6	29	A	B	B	B	B		
30	Upper Heathcote	Aug. 13	27	A	B	B	A	A	B	Much improved.
31	Halswell	Sept. 6	22	B	B	B	A	B		Building under repair. Low average of accuracy. Too much attention to special subjects.
32	Tai Tapu	" 6	31	B	B	B	A	A		Improving.
33	Heathcote Valley	Aug. 7	26	B	B	B	B	C		No Bibles; low standard.
34	Lower Heathcote	" 5	15	A	B	B	B	B		Fittings incomplete.
35	Avonside	Sept. 2	45	B	B	B	A	B		
36	Papanui St. Paul's	July 23	68	B	A	A	A	A	A	
37	Do Wesleyan	Aug. 30	30	B	B	B	B	B		Improving slowly.
38	North Road ...	" 14	19	B		B				New Teacher.
39	Harewood Road	" 9	17	B	B	A	A	A		
40	St. Alban's	" 8	28	B	C	B	B	C		
			1464							

A satisfactory; B less so; C unsatisfactory, or in a state of commencement.

BOARD OF EDUCATION,

(SEPTEMBER 27—OCTOBER 31, 1867.)

SUMMARY REPORT OF INSPECTOR OF SCHOOLS.

To the Honorable H. J. TANCRED, Chairman.

SIR,—I have the honour to submit a Summary Report on the schools examined during the month.

Ten Ordinary Schools, including 506 children, have been examined during the month.

OF THE ABOVE SCHOOLS—

Five are Satisfactory as to result of examination.

Three, Improved or improving.

Two, Tolerable.

One, Unsatisfactory.

THE SCHOOLS EXAMINED :

St. Albans	Oct. 2	...	Present, 64	...	Improving.
Prebbleton	Oct. 9	...	Present, 22	...	Much improved.
Courtney	Oct. 10	...	Present, 13	...	Satisfactory.
Woodend	Oct. 14	...	Present, 45	...	Improving.
Saltwater Creek	Oct. 15	...	Present, 22	...	Tolerable. Defects are detailed in the Journal.
Leithfield	Oct. 15	...	Present, 25	...	Unsatisfactory. Too drowsy. Greater energy and smartness are requisite. Defects are detailed in the Journal.
Ashley Bank	Oct. 16	...	Present, 13	...	Tolerable. Attendance, small; attainments, satisfactory. The arrangement of the desks has been altered to one better adapted to Sunday Services than to class teaching and the maintenance of order.
Rangiora	Oct. 17	...	Present, 53	...	Satisfactory. Junior classes much improved.
Christchurch, Wesleyan	Oct. 23	...	Present, 144	...	Satisfactory.
Papanui, St. Paul's	Oct. 25	...	Present, 100	...	Satisfactory.

The particulars of each of the above examinations are fully detailed in the Journal.

F. G. Cotton and Henry Allison have been examined as candidates for any vacant appointment; and William Fleming has passed a successful examination as candidate for the mastership of the Leeston School—as per reports and certificates of Oct. 5th.

I have the honour to be, Sir,

Your obedient servant,

J. P. RESEFELL,

Inspector of Schools.

BOARD OF EDUCATION,

(Nov. 1—28, 1867.)

SUMMARY REPORT OF INSPECTOR OF SCHOOLS.

To the Honorable H. J. TANCRED, Chairman.

SIR,—I have the honour to submit a Summary Report on the schools examined during the month.

Eighteen of the Ordinary Schools, including 797 children, have been examined.

OF THE ABOVE SCHOOLS—

One, the Christchurch St. Andrew's School, is *highly creditable* as to the result of the examination.

Nine are Satisfactory.

Five are Improved.

Three are Moderate.

THE SCHOOLS EXAMINED.

Christchurch St. Andrews	Nov. 4	...	Present, 61	...	Highly creditable.
Christchurch St. Luke's...	Nov. 5	...	Present, 68	...	Moderate.
Lower Heathcote (Ferry Road)	Nov. 6	...	Present, 21	...	Moderate. Attendance very small for such a populous district.
Riccarton	Nov. 7	...	Present, 47	...	Improved, as to attendance and attainments, &c.
St. Michael's	Nov. 8	...	Present, 133	...	Satisfactory. An artesian well has been sunk, and further improvements in the buildings and premises are contemplated.
Kaiapoi Roman Catholic School	Nov. 12	...	Present, 12	...	New Teacher.
Kaiapoi Wesleyan School	Nov. 12	...	Present, 38	...	Improved.
Papanui Wesleyan	Nov. 13	...	Present, 26	...	Improved.
North Road	Nov. 14	...	Present, 29	...	Improved.
Harewood Road	Nov. 18	...	Present, 24	...	Satisfactory.
Fernside School	Aug. 19	...	Present, 37	...	Satisfactory.
Cust Valley	Aug. 19	...	Present, 27	...	Satisfactory.
Oxford Church of England School	Aug. 20	...	Present, 42	...	Satisfactory.
Oxford and Harewood School	Aug. 20	...	Present, 30	...	Satisfactory.
Eyreton School	Aug. 21	...	Present, 20	...	Satisfactory, children very neat and orderly, but less cheerful than at most schools.

Heathcote Valley ... Nov. 22 ... Present, 42 ... Much improved ; as to the appearance and order of the room ; assistant teacher ; supply of apparatus &c. ; and as to the attainments.

Christchurch Roman Catholic School ... Nov. 22 ... Present, 87 ... Satisfactory.

Avonside... ... Nov. 25 ... Present, 53 ... Satisfactory.

I have also examined two candidates, Leen Cresswell, for the Mastership of the South Selwyn School, as per Report of Nov. 2nd ; and Thomas May, candidate for an appointment, as per certificate of Nov. 27.

The latter having been an army schoolmaster, with the rank of Corporal, might prove useful in the event of any person being required to drill the school children. I have observed that some measure of the kind has been under the consideration of the General Government ; and I believe that drill exercise would be very beneficial to the schools.

I have the honour to be, Sir,

Your obedient servant,

J. P. RESTELL,

Inspector of Schools.

BOARD OF EDUCATION,

(NOVEMBER 29—DECEMBER 26, 1867.)

INSPECTOR'S SUMMARY REPORT FOR THE MONTH.

To the Hon. H. J. Tancred, Chairman.

SIR,—I have the honour to submit a Summary Report on the Schools and Candidates examined during the month.

Twelve Ordinary Schools, including 421 children, have been examined, making, together with 91 present at the Lyttelton High School, 13 schools and 512 children. I also visited the Halswell School, but found it closed without the consent of the Chairman of the Local Committee.

Of the schools examined—those more remote (with the exception of the Pigeon Bay School, not examined, and the Okain's Bay, highly satisfactory) are generally less satisfactory than those more accessible. This is partly owing to the newness of some—such as the Waimate and Arowhenua Schools—and to the imperfect organisation of the others :

Four are Satisfactory.

Two—Improved.

Two—Moderate.

Two—Very moderate.

One—Proposed new school.

LIST OF SCHOOLS EXAMINED, WITH REMARKS.

Upper Heathcote ... Nov. 29 ... Present, 27 ... Satisfactory.

Arowhenua ... Dec. 2 ... Present, 32 ... Moderate. The school-room very clean ; the children also remarkably clean, nice, and orderly. It is questionable whether a rather high rate of fees does not exclude children of a poorer class.

Registers incomplete, as to columns II. and III.

- Geraldine (proposed)
School Present, 17 ... See Special Report.
- Timaru Dec. 5 ... Present, 65 ... Very moderate. The mistress having been ill for nearly three months, the school had suffered very materially.
- Waimate... .. Dec. 6 ... Present, 24 ... Very moderate. The progress has been very moderate since the opening of the school, nearly a year ago; but the Chairman and another member of the Committee assured me of their own satisfaction, and of that of the parents, with the master.
- Lyttelton Wesleyan
School Dec. 11 ... Present, 65. ... Satisfactory. The children are of a low average age, but are well grounded in elementary knowledge.
- Lyttelton Church of
England School ... Dec. 11. ... Present, 59 ... Satisfactory. The attendance does not keep pace with that of the neighbouring schools, but the teaching is much more efficient and equable than formerly.
- Tai Tapu Dec. 13 ... Present, 34 ... Satisfactory. The steady progress and improvement of the whole school is highly commendable.
- Akaroa Dec. 18 ... Present, 24 ... Improved, as to the attainments of the children; but the attendance has fallen off.
- Duvauchelle's Bay ... Dec. 18 ... Present, 25 ... Moderate.
- Little Akaloa Dec. 19 ... Present, 24 ... Improved. The holidays had commenced, but the children in ordinary attendance, and living near the school, assembled at once on the usual signal, the blowing of a horn. There is a decided improvement throughout the school under the new teacher. The attainments of three elder scholars are highly creditable to the master and his predecessors. The registers have been satisfactorily kept; they shew an average daily attendance of nearly 23 for the quarter. Two windows, including about ten small panes of glass, very much require mending.
- Okain's Bay Dec. 20 ... Present, 25 ... Very satisfactory, as to the attainments of those present; but only about half the children attend the school. Parents are sometimes unable to pay the fees, but unwilling to accept free admission as a favour. The children's help is a consideration, but there must also be some apathy as to their education.

Details of each examination will be found in the Journal.

I have the honour to be, Sir,

Your obedient servant,

J. P. RESTELL,

Inspector of Schools.

SPECIAL REPORT ON THE PROPOSED GERALDINE SCHOOL.

INSPECTED DECEMBER 4, 1867.—PRESENT, 17.

The site is on unfenced reserves in use of the Survey Department.

The temporary Survey Office and dwelling have been lent for school purposes on condition of repair.

The buildings are of slabs, cobbed, and have thatched roofs.

Schoolroom, 18 x 14, with sufficient provision for light, ventilation and warmth.

The furniture and apparatus consist of—

A table, 6ft x 3, which serves for a writing desk for a few elder pupils

Three forms, 6ft. x 5in.

One form, 12ft. x 5in.

One black board

Two maps

One set of reading tablets

A sufficiency of books, slates, &c., for present use.

The attainments of the children are quite elementary; but shew results of careful teaching during the six months the school has been at work.

The building is fit for use as a school; the teacher is competent for her work; the school, a dame-school, has been much wanted in the district.

J. P. RESTELL,

Inspector of Schools.

December 26, 1867.

BOARD OF EDUCATION,

QUARTER ENDING DECEMBER 31, 1867.

QUARTERLY REPORT OF INSPECTOR OF SCHOOLS.

To the Honorable H. J. TANCRED, Chairman.

SIR,—I have the honour, in obedience to your instructions, to submit Tabular Summaries of the Quarterly and Annual returns as to attendance and payment, and a Schedule as to the efficiency of the Schools Examined.

I have also annexed a Schedule, shewing the number of scholars with reference to their age, sex, and attainments, and adapted to the requirements of the General Government.

It will be seen from the Tabular Summary of Quarterly Returns, that during the quarter the number of attendants has been 2815, an increase of 443 upon the corresponding quarter of 1866.

The average attendance 1950, an increase of 318.

The gross increase is at 19 instead of 15 per cent, as compared with last year.

The average increase is 16 per cent, *i.e.*, at the same rate as last year.

That it is not greater, may probably be due to an unusually wet season; and to the prevalence of measles in some districts.

The amount of school fees is £1000 17s, an increase of £175 16s 9d.

It will be seen from the schedule as to the efficiency, that the number of schools examined has been 40, including 1724 children.

The schools more especially commended for steady efficiency throughout the year are the—

Pigeon Bay, Academy
 Okain's Bay School
 Christchurch Wesleyan School
 Papanui St. Paul's
 Kaiapoi Church of England
 Lyttelton Church of England
 Rangiora Boys'
 Christchurch St. Michael's
 „ St. Andrew's
 „ Roman Catholic
 Lyttelton Wesleyan School.

The above list is, as nearly as can be, in the order of merit, and identical with several numerical tests of accuracy during the year.

Other schools deserving of commendatory notice for improvement during the year are—

Ashley Bank
 Riccarton
 Fernside
 Eyreton
 Tai Tapu
 Avonside
 Courtney
 Woodend
 Kaiapoi Wesleyan
 Upper Heathcote
 North Road.

The following children are especially commended for good conduct and diligence during the year:—

From the Pigeon Bay Academy—

Robert Hay, William Hall, Richard Hall, Christina Pitcaithley, James Fitzgerald, and William Fitzgerald.

Okain's Bay School—

Walter Prosser, Charles Moore, William Moore, Mary Ann Wear, Arthur Sefton, William Thacker.

Christchurch Wesleyan School—

Thomas Rutland, Thomas Walker, Frederick Cumberworth, Thomas Ambrose, George Griffin, Mary Corrick, W. Bannister, George Wedge, Bertha Turrell.

St. Luke's—

William Edgar, William Haggitt, Mary St. Quentin, John Triphook, Frank Haddrell, Alfred Fielder.

Papanui, St. Paul's—

George Reese, John Leigh, Alexander Wilson, Catherine Craw, Ann Harris, Frederick Bishop, Martha Goodwin, Rebecca Bishop, Mary Kruse, Egbert Mayo, T. Duncan, Alice Diepnhm, Henry Godfrey.

Kaiapoi Church School—

Walter Bean, Charles Bean, William Heney, Louisa Weston, George Day, Edward Davis, Isabella Wilson, George William Thomas, Ellen Jeffs, Margaret J. Heney, Rosa Harris.

Lyttelton Church of England—

John Carroll, Maria Hinett, Sarah A. Routledge.

Lyttelton Wesleyan School—

Jane Webb, Elizabeth Rogers, Emily Jenkins.

Rangiora Boys'—

Frederick Horrell, Henry Seager, sen., Arthur Percival, Mark Melbourn, Edward Steggall, Charles Leech, Frederick Morton, Edward Jennings, Joseph Frost, Charles Jennings.

St. Michael's School—

Thomas Smith, Burton Pye, Mary Ann Alexander, F. C. Hawley, James Sheriff, James Scarlet, James Wilson, jun., Barbara Hughes, Alexander Todd, Charles Tetley.

St. Andrew's—

Elizabeth Allen, Charles Mills, Minnie Bannister, Jane Turton, Jane Sargent, Emma Varley, J. Gilkes, Harry Scott, Annie Coker, Barbara Kissell.

Roman Catholic—

Mary M'Dermott, Margaret Harrington, Edward Sharpe, Rosina Gray,
Hugh Gray.

Ashley Bank—

Helen Bartrum, Louisa Bartrum, T. Benetto, James Parlane, W. Dixon,
Frederick Bartrum.

Riccarton—George Hill, Thomas Hill, Alexander Webster.

Fernside—Matthew Dalziell, Alice Chapman, John McIntyre.

Eyreton—George Scott Cox, Alfred Mason, Charles Chilton.

Tai Tapu—John Davis, William Sanders Peryman, Mary Yarr.

Avonside—George Collett, Eliz. Wells, Frederick Bowley.

Courtney—Mabel White, Charles Cheyne.

Woodend—Robert Booth, Mary Ann Ball.

Kaiapoi Wesleyan—John Lawry, Frederick Wake.

Upper Heathcote—Julia Seager, T. A. Dixon

North Road—Elizabeth Tisch, Christina Tisch, A. Duncan

Harewood Road—Susan Stanley.

Saltwater Creek—Agnes Dodd, Kate Barclay, Margaret Scott

Leithfield—Eliza Moore, George Leith.

Prebbleton—Alfred Dawson.

Templeton—Wm. Guy.

Oxford—J. Tomlinson.

Harewood—George Crowe.

BOARD OF EDUCATION, 1867,

QUARTER ENDING DECEMBER 31.

SCHEDULE AS TO EFFICIENCY OF SCHOOLS EXAMINED.

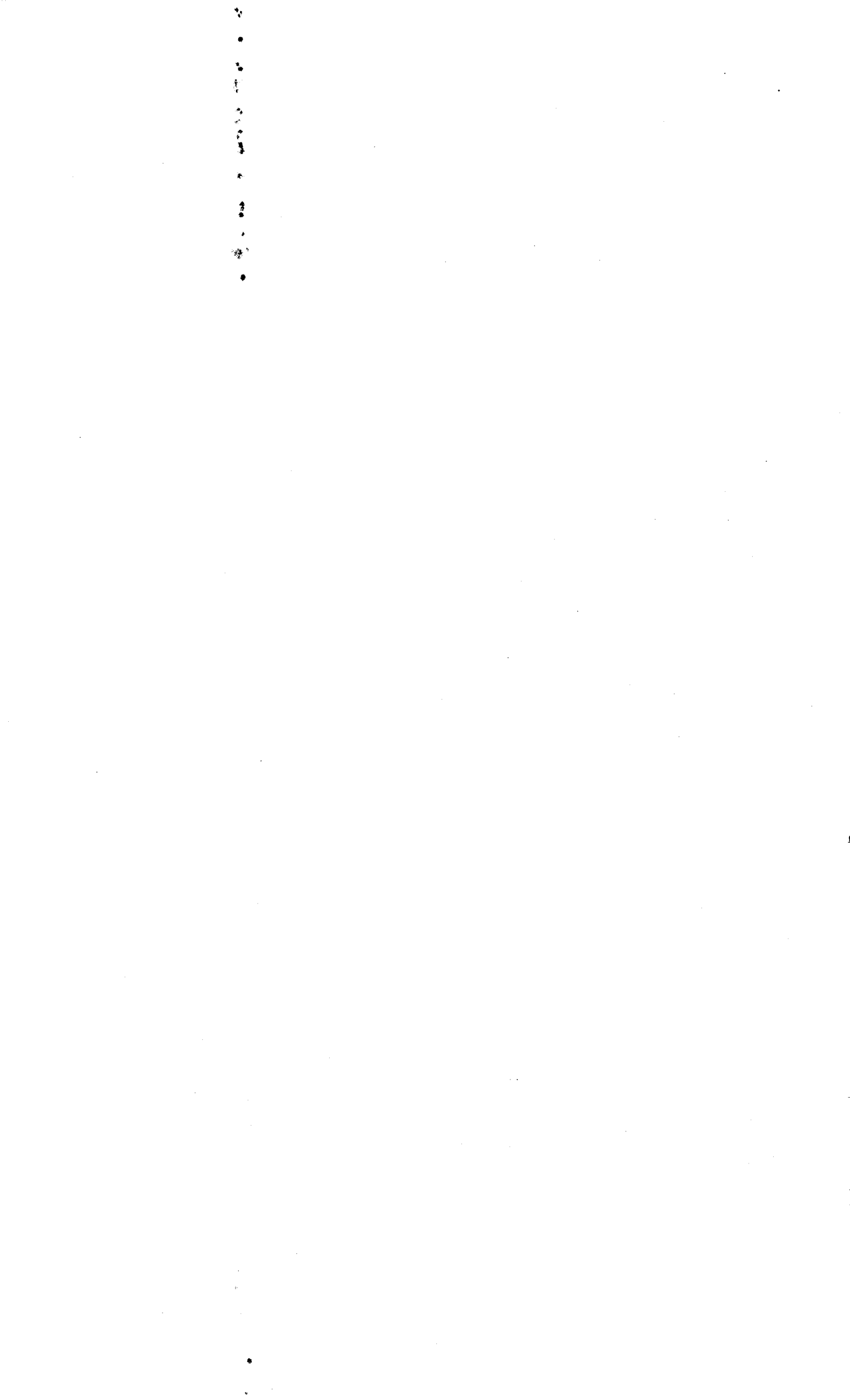
	List of Schools Examined.	Date of Examination.	Number Present	Site, Buildings, and Premises.	Books and Apparatus.	Organization and Discipline.	Bible Knowledge.	Elementary.	Ordinary.	REMARKS.
1	Christchurch, St. Michael's ...	Nov. 11	133	A	A	A	A	B	A	Arithmetic much improved.
2	„ Wesleyan	Oct. 23	144	A	A	A	A	A	A	Steady progress throughout.
3	„ St. Andrew's	Nov. 4	61	B	A	A	A	A	A	
4	„ St. Luke's	„ 5	68	B	A	B	B	A	B	Room inconvenient as to shape, light, and draft.
5	„ R. Catholic	„ 22	87	A	B	A	B	A	B	
6	Lyttelton Church of England ...	Dec. 11	59	A	A	A	A	B	A	
7	„ Wesleyan	„ 11	65	A	A	A	A	A	...	
8	Kaiapoi Wesleyan	Nov. 12	38	B	A	B	A	A	...	Much improved.
9	„ R. Catholic	„ 12	12	B	B	B	B	B	...	
10	Woodend School	Oct. 14	45	B	A	B	A	B	A	The shape and arrangement of the room obviate organization. Inconvenience and disorder result from want of proper desks and from bad organization.
11	Saltwater Creek...	„ 15	22	B	C	C	B	A	...	Incommensurate results.
12	Leithfield ...	„ 15	25	A	A	B	B	C	C	Careful and successful teaching.
13	Ashley Bank ...	„ 16	13	B	A	A	A	A	A	Improvement as to more general accuracy of the lower classes.
14	Rangiora Boys'...	„ 17	53	A	A	A	A	A	A	
15	Fernside ...	Nov. 19	37	A	A	A	A	A	...	
16	Cust Valley ...	„ 19	27	B	A	A	A	A	...	
17	Oxford ...	„ 20	42	B	A	A	A	A	...	
18	Harewood ...	„ 20	30	B	A	A	A	A	...	
19	Eyreton ...	„ 21	20	A	A	A	A	A	...	
20	Courtney ...	Oct. 10	18	A	A	B	A	A	...	Much improved.
21	Akaroa ...	Dec. 18	24	B	C	B	B	B	...	Not enough books. Attendance falling off.
22	Duvauchelle's Bay	„ 18	25	B	C	B	A	B	...	Not enough books; results very moderate.
23	Okain's Bay ...	„ 20	25	A	A	A	A	A	A	
24	Little Akaloa ...	„ 19	24	B	B	B	B	B	...	Short of books.
25	Riccarton ...	Nov. 7	47	A	A	B	A	B	A	Much improved as to attendance and efficiency; but sufficient attention is not paid to the junior classes.
26	Prebbleton ...	Oct. 9	22	B	B	C	A	A	...	Attainments improved. Children awkward; want drill exercise.
27	Upper Heathcote	Nov. 29	27	A	A	B	A	A	...	
28	Tai Tapu ...	Dec. 12	34	B	B	B	A	A	...	Room inconvenient; attendance and efficiency increasing.
29	Heathcote Valley	Nov. 22	42	B	B	B	A	B	B	
30	Lower Heathcote, Ferry Road ...	„ 6	21	A	B	B	B	B	...	
31	Avonside ...	„ 25	53	B	A	B	A	B	...	Improving.
32	Papanui, St. Paul's	Oct. 25	100	B	A	A	A	A	A	
33	„ Wesleyan	Nov. 13	26	B	B	B	A	A	...	Improving. Awkward shape of room interferes with order and progress.
34	North Road School	„ 14	29	B	B	B	A	A	...	Improving, as above.
35	Harewood Road...	„ 18	24	B	A	B	A	A	...	Room, &c., inconvenient; results creditable.
36	St. Albans ...	Oct. 2	64	B	A	New Teacher.				
37	Geraldine ...	Dec. 4	17	B	New School.					
38	Arowhenua ...	„ 2	32	B	A	B	B	B	...	Premises still unfenced.
39	Timaru ...	„ 5	65	B	B	B	A	B	B	Long and serious illness of the Mistress accounts for the falling off.
40	Waimate ...	„ 6	24	B	B	B	B	B	...	

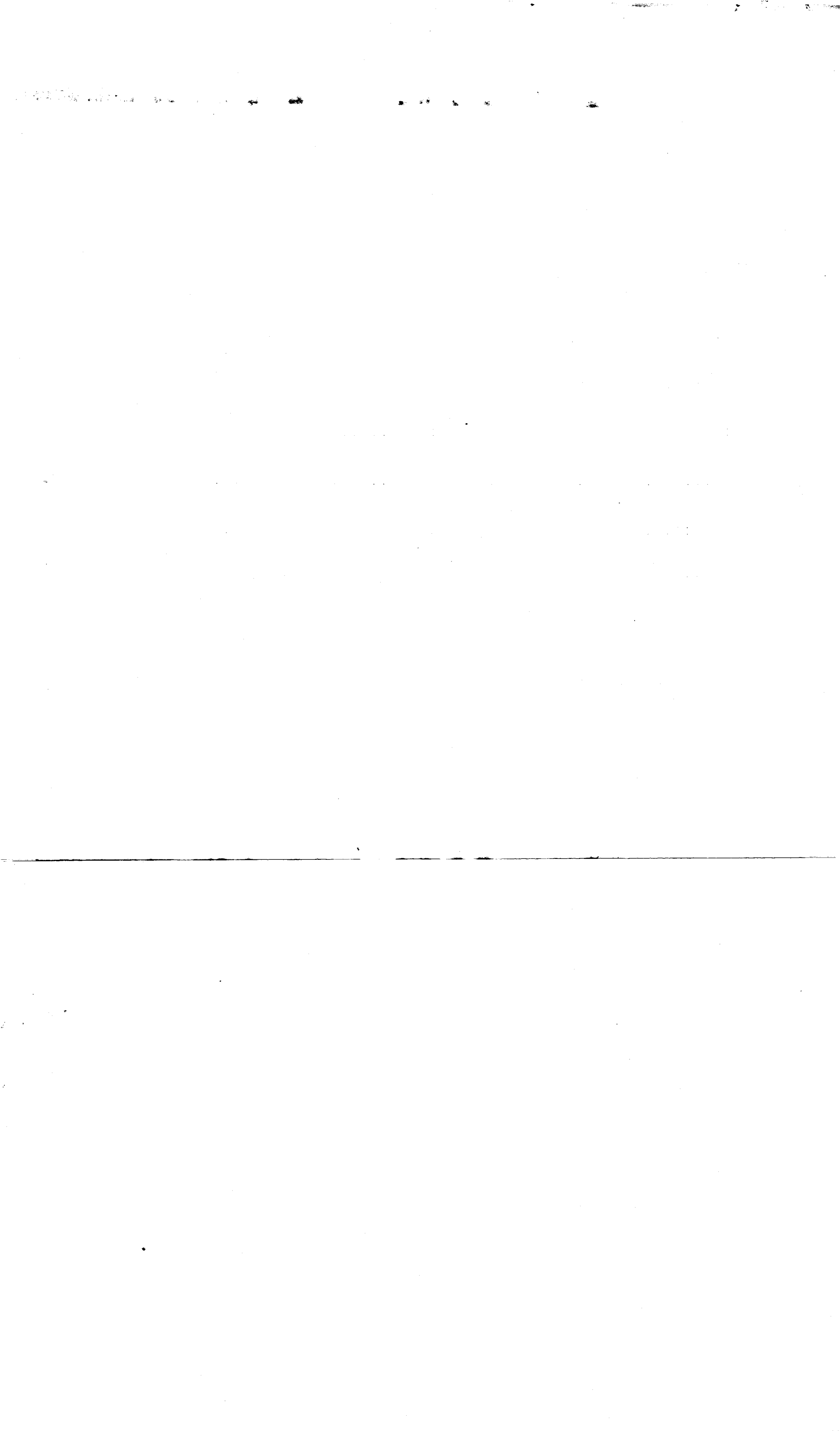
QUARTER ENDING DECEMBER, 1867.—TABULAR SUMMARY OF RETURNS
AS TO ATTENDANCE AND PAYMENT.

	List of Ordinary Schools.	Number of Attendants.			Average Daily Attendance.			Amounts of School Fees.
		M.	F.	Total.	M.	F.	Total.	
1	Christchurch—St. Michael's	126	55	181	88	35	123	£ s. d. 60 19 6
2	Do. Wesleyan	123	66	189	94	45	139	62 12 9
3	Do. St. Andrew's	20	57	77	14	40	54	28 2 0
4	Do. St. Luke's	67	55	122	39	30	69	44 19 6
5	Do. R. Catholic	91	65	156	57	41	98	51 4 6
6	Lyttelton Church of England	47	29	76	35	19	54	36 7 0
7	Do. Wesleyan	57	52	109	37	33	70	32 6 6
8	Governor's Bay	9	5	14	7	4	11	15 5 0
9	Kaiapoi—Church of England	52	33	85	36	18	54	29 5 0
10	Do. Wesleyan	32	17	49	18	12	30	16 8 6
11	Do. R. Catholic	12	7	19	9	4	13	5 7 6
12	Woodend	31	35	66	22	26	48	18 11 9
13	Saltwater Creek	16	13	29	11	10	21	11 17 0
14	Leithfield	21	11	32	16	6	22	11 13 0
15	Ashley Bank	13	10	23	8	5	13	7 0 0
16	Rangiora—Boys'	73	...	73	50	0	50	27 2 0
17	Do. Girls'	11	37	48	8	33	41	13 3 6
18	Fernside	21	24	45	18	20	38	12 15 6
19	Cust Valley	15	14	29	12	11	23	10 8 0
20	Oxford	36	19	55	26	13	39	17 2 6
21	Harewood	15	21	36	13	17	30	14 4 0
22	Eyreton	12	10	22	9	8	17	5 10 0
23	Courtney	12	9	21	10	9	19	6 5 0
24	Akaroa	20	28	48	13	16	29	14 11 9
25	Pigeon Bay	24	12	36	23	10	33	16 10 0
26	Duvauchelle's Bay	23	12	35	20	9	29	15 0 0
27	Okain's Bay	17	16	33	13	9	22	10 5 0
28	Akaloa	12	15	27	11	10	21	10 12 6
29	Riccarton	28	38	66	19	24	43	25 12 6
30	Prebbleton	22	17	39	12	11	23	13 3 6
31	Templeton	40	15	55	23	10	33	10 3 0
32	Lincoln	26	22	48	20	17	37	23 4 0
33	Leeston	19	19	38	10	14	24	10 10 6
34	Upper Heathcote	24	15	39	17	10	27	15 4 0
35	Halswell	26	16	42	18	11	29	18 4 0
36	Tai Tapu	17	24	41	14	18	32	21 9 0
37	Heathcote Valley	29	30	59	19	19	38	20 17 9
38	Lower Heathcote	25	3	28	17	2	19	10 9 6
39	Avonside	45	24	69	35	17	52	33 8 0
40	Papanui—St. Paul's	69	54	123	53	43	96	40 2 0
41	Do. Wesleyan	23	14	37	16	7	23	9 9 0
42	North Road	28	16	44	19	12	31	19 1 0
43	Harewood Road	29	9	38	15	5	20	13 17 6
44	St. Alban's	72	41	113	45	23	68	32 2 0
45	Geraldine	8	12	20	7	10	17	6 10 0
46	Arowhenua	21	20	41	12	16	28	20 9 0
47	Timaru	65	44	109	47	31	78	39 13 0
48	Waimate	16	15	31	11	11	22	11 14 6
		1640	1175	2815	1146	804	1950	1000 17 0

ABSTRACT OF TEACHERS' ANNUAL RETURNS.—1867.

	List of Ordinary Schools.	Number of Attendants.			Average Daily Attendance.			Amounts of School Fees.		
		M.	F.	Total.	M.	F.	Total.	£	s.	d.
1	Christchurch, St. Michael's	198	91	289	74	31	105	220	10	6
2	„ Wesleyan	200	116	316	88	39	127	246	7	9
3	„ St. Andrew's	36	106	142	12	36	48	105	17	0
4	„ St. Luke's	102	119	221	31	29	60	153	1	6
5	„ Roman Catholic	134	103	237	52	33	85	171	12	6
6	Lyttelton Church of England	66	47	113	33	19	52	128	13	0
7	„ Wesleyan	60	54	114	32	29	61	115	6	6
8	Governor's Bay	10	5	15	6	2	8	62	6	6
9	Kaipoi Church of England	70	48	118	32	17	49	96	16	6
10	„ Wesleyan	40	26	66	18	11	29	69	5	6
11	„ Roman Catholic	13	8	21	9	5	14	13	11	6
12	Woodend	47	43	90	20	17	37	33	8	9
13	Saltwater Creek	23	17	40	11	10	21	39	7	6
14	Leithfield	27	17	44	12	4	16	42	9	0
15	Ashley Bank	24	16	40	9	6	15	22	18	0
16	Rangiora Boys' School	104	0	104	48	0	48	91	16	0
17	„ Girls' „	14	52	66	5	33	38	50	12	6
18	Fernside	23	29	52	12	15	27	31	7	0
19	Cust Valley	15	14	29	10	9	19	15	2	0
20	Oxford	51	24	75	21	10	31	54	4	6
21	Harewood	18	22	40	12	15	27	25	13	6
22	Eyreton	14	12	26	8	7	15	20	10	0
23	Courtney	16	10	26	10	8	18	20	7	7
24	Akaroa	33	36	69	15	15	30	63	12	4
25	Pigeon Bay	28	12	40	23	8	31	58	14	0
26	Duvauchelle's	26	14	40	18	8	26	55	19	6
27	Okain's Bay	20	20	40	13	11	24	44	4	9
28	Akaloa	13	19	32	8	8	16	28	12	6
29	Riccarton	38	49	87	17	17	34	78	2	6
30	Prebbleton	31	25	56	10	8	18	39	9	6
31	Templeton	45	20	65	19	7	26	20	9	6
32	Lincoln	32	26	58	12	9	21	54	11	6
33	Leeston	19	19	38	10	14	24	10	10	6
34	South Selwyn	15	9	24	12	7	19	12	0	0
35	Upper Heathcote	30	26	56	13	10	23	54	4	6
36	Halswell	29	21	50	14	7	21	51	14	0
37	Tai Tapu	20	26	46	11	12	23	64	5	0
38	Heathcote Valley	35	43	78	17	14	31	72	8	4
39	Lower Heathcote	57	20	77	20	5	25	59	9	6
40	Avonside	73	33	106	27	13	40	94	16	6
41	Papanui, St. Paul's	88	81	169	46	34	80	144	13	6
42	„ Wesleyan	32	23	55	17	7	24	34	11	6
43	North Road	83	17	50	12	7	19	45	6	0
44	Harewood Road	35	16	51	13	5	18	37	6	0
45	St. Albans	81	60	141	35	20	55	103	19	0
46	Geraldine	8	12	20	7	10	17	6	10	0
47	Arowhenua	31	26	57	11	12	23	67	9	4
48	Timaru	101	85	186	45	36	81	163	5	0
49	Waimate	30	34	64	13	16	29	57	5	0
		2288	1751	4039	1023	705	1728	3354	14	4





BOARD OF EDUCATION, 1867.

(DECEMBER 27—JANUARY 30, 1868.)

MONTHLY SUMMARY REPORT OF INSPECTOR OF SCHOOLS.

To the Hon. H. J. Tancred, Chairman.

SIR,—I have the honour to submit a summary Report on the schools examined during the month.

Thirteen ordinary schools, including 346 children, have been examined.

The Christmas, harvest, and other holidays, and the very wet weather, have prevented the examination of a greater number of schools, and have thinned the attendance of several of those examined.

OF THE SCHOOLS EXAMINED—

One is Satisfactory.

One—Very moderate.

One—A new school.

Five are Improved.

Five—Tolerable.

THE SCHOOLS EXAMINED.

Halswell Jan. 6 ... Present, 36 ... Tolerable.

The very imperfect reading, spelling, and tables of the Third Class showed an unequable distribution of the teaching. The higher Classes have made commendable progress. Register untidy.

Lincoln Jan. 7 ... Present, 41 ... Satisfactory, as to the attainments. *Yellow* blinds cause a painful glare. Two more desks *at least* are wanted, but a front row of three would make up the complement. Unsuitable books in use, owing to inability to procure those more requisite.

Leeston Jan. 8, very wet. Present, 9 ... New school, badly built; no chimney, no ventilation, very short of apparatus. Teacher most *plodding*.

Prebbleton Jan. 9 ... Present, 21 ... Improved; books not well adapted to the classes using them. Children very inanimate, want discipline and drill. Register incomplete.

Templeton Jan. 9 ... Present, 26 ... Tolerable. Registers incomplete.

Courtney Jan. 10 ... Present, 20 ... Much improved. Want drill, &c.

St. Albans Jan. 13 ... Present, 45 ... Tolerable. Registers incomplete.

North Road Jan. 15 ... Present, 25 ... Much improved. Registers incomplete as to *one* column. The fences (Church Property) out of repair.

Leithfield Jan. 20 ... Present, 17 ... Improved as to younger children, elder ones have mostly left. Attendance and efficiency reduced.

Saltwater Creek... .. Jan. 20 ... Present, 17 ... Tolerable. Sunday benches piled up into a risky contrivance for writing desks. Want of order, in a

great measure owing to want of suitable desks and benches; also to bad arrangement. The arithmetic weak and inaccurate for want of explanation, and of more use of the blackboard. *The register remarkably neat, complete and creditable.*

Woodend... .. Jan. 21 ... Present, 49 ... Improved. The arrangement of the desks and benches has been *altered* so as to suit Sunday classes and uses, rather than the organisation of a day school. The teacher, hemmed in by the children, who sit all round the room, maintains order with greater difficulty than with them in front of him. In writing, the pupils face the close wall or sunny window, with their backs to the teacher.

Some of the registers are missing; the register for the current quarter is incomplete, as to information to be brought forward.

Kaiapoi Roman Catholic
School Jan. 21 ... Present, 16 ... Tolerable.

Papanui Wesleyan School Jan. 32 ... Present, 24 ... Improved.

The details of each examination are entered in the Journal.

I have the honour to be, Sir,

Your obedient servant,

J. P. RESTELL,

Inspector of Schools.

BOARD OF EDUCATION.

(JANUARY 30—FEBRUARY 27, 1868.)

MONTHLY REPORT OF INSPECTOR OF SCHOOLS.

To the Chairman of the Board.

SIR,—I have the honour to submit a Summary Report on the Schools examined during the month.

The recent re-opening of the schools after the Christmas holidays, the wet weather, the floods, and the harvest have rendered most schools ineligible for examination.

I had occasion, in the last Monthly Report, to notice the incomplete and irregular manner in which the registers are kept in several schools. There is still some ground for complaint on this account; but I am happy to say that the registers in the town schools—more especially those at Christchurch: St. Michael's, and Wesleyan schools—exemplify the manner in which a register should be kept, both as to accuracy and neatness. The same remark will apply to most of those schools which have acquired a character for steady efficiency. I instance those above mentioned chiefly on account of their central position.

Instances occasionally recur of teachers being met at a distance from their schools while the school either is, or is supposed to be, at work; and, on more than one occasion, I have not discovered the school to be closed until arriving to examine it. The teachers have obtained the consent of some one on the School Committee to a desirable holiday, but without consulting the Chairman of the Local Committee. The last instance of this kind was at the Lower Heathcote school, Ferry Road.

OF THE SCHOOLS EXAMINED.

St. Andrew's school,
Christchurch ... Feb. 19 ... Present, 49 ... Very creditable, except
that the register was not quite complete as to information to be brought forward.

Christchurch Roman
Catholic ... Feb. 20 ... Present, 106 ... Satisfactory.

Heathcote Valley ... Feb. 21 ... Present, 30 ... Chimney down. Gaps
left in the two former fire-places should be filled up, and a stove got before
winter. The porch, almost blown down, is in a tumble-down state.

Discipline improved, but register incomplete as to columns I., II., and III.,
(information to be brought forward) and as to the last two days' attendance;—
this being Friday, the attendance had not been taken since Tuesday. The register
would have to be made up from memory.

Some slight progress and improvement were observable.

Lower Heathcote School
(Ferry Road ... Feb. 21 ... Present, 26 ... Attainments very moderate. There is not sufficient evidence of the careful work of a skilful teacher.

The rain from the roof falls into a hollow near the base of the chimney,
enough for the bricks to soak up the wet, and to leave the hearth in the school-
room very damp.

A fender is still wanting, *although certified to have been obtained.*

Register remarkably neat and satisfactory.

The Organisation and Classification are not good.

1. As to the arrangement of the desks in two classes instead of three.
2. The Classification of the children, some in classes too easy, others in those too difficult.
3. The books (Third and Fourth of Dublin Series) too soon in the hands of those using them.

Christchurch Wesleyan
School ... Feb. 24 ... Present, 139 ... Satisfactory, although
somewhat below their usual average of accuracy in Arithmetic.

Christchurch St. Michael's Feb. 25 ... Satisfactory on the whole; but possibly
improvable as to the Organisation; more especially as to making more use of the
desks.

The details of each examination are entered in the Journal.

I have the honour to be, Sir,

Your obedient servant,

J. P. RESTELL,

Inspector of Schools.

BOARD OF EDUCATION,

(FEBRUARY 28—MARCH 26, 1868.)

MONTHLY SUMMARY REPORT OF INSPECTOR OF SCHOOLS.

To the Honorable H. J. TANCRED, Chairman.

SIR,—I have the honour to submit a Summary Report upon the Schools examined during the month.

Sixteen schools, including 670 children, have been examined.

The Lower Heathcote School was also visited, on the 9th March, for the purpose of suggesting certain alterations and improvements in its internal arrangement. (See Special Report).

The Kaiapoi Roman Catholic schoolroom was visited on the 3rd inst. The building was open, and the desks, forms, and slates were exposed; but the school I ascertained to have been closed early in the quarter. The school had received very little and but irregular support from the parents of the denomination. Several of the children are now attending an efficient school.

The Kaiapoi Church School was, at the same time, ineligible for examination, having been conducted partly in temporary premises, on the north side of the river, until the repair of the bridge injured by the floods.

The Rangiora Girls' School was closed for a short time, owing to the indisposition of the mistress.

Of the schools on Banks Peninsula, there is a lamentable apathy on the part of some parents, who either wilfully neglect, or even positively refuse, to allow their children to receive any education. In one instance their manner of living is said to be most demoralising,

It is a matter of great regret that the schools at Pigeon Bay and Okain's Bay shew a very reduced attendance, while the attainments of the children present bear witness to the unflagging energy of the respective teachers.

It is very satisfactory, however, to observe that those schools which had received admonition from the Board shew a decided improvement since last examination.

There is also, with few exceptions, a very general improvement in the registers; and more correct returns may be expected.

OF THE SCHOOLS EXAMINED—

Two are satisfactory (the Papanui and Rangiora Schools)

Four are satisfactory, allowing for circumstances.

Seven are improved, or improving.

Two middling

One has fallen off since Christmas.

LIST OF SCHOOLS EXAMINED, AND REMARKS.

Papanui, St. Paul's ... Feb. 28 ... Present, 71 ... Satisfactory. The attendance was much below the average.

Avonside ... March 10 ... Present, 46 ... Improving, although there are too many little classes, and the attainments are still below the average.

Kaiapoi Wesleyan School March 10 ... Present, 38 ... Improved.

- St. Luke's March 5 ... Present, 80 ... Improving under the new master.
- Ashley Bank March 10 ... Present, 7 ... The school had not yet fully assembled after harvest.
- Rangiora March 11 ... Present, 52 ... Satisfactory.
- Kaiapoi Church School ... March 12 ... Present, 66 ... Satisfactory, on the whole, although below usual average efficiency of this school, owing, probably to interruption from recent floods.
- Upper Heathcote school March 13 ... Present, 28 ... Middling; the children behindhand in elementary knowledge. The register incomplete.
- Riccarton March 13 ... Present, 45 ... Considerably improved; but time which might be more profitably spent in perfecting the younger classes, is spent in *lecturing* the elder ones in what they could learn of themselves.
- Lyttelton Church of England March 16 ... Present, 46 ... Fallen off. Accuracy in elementary knowledge has not been well kept up since the December examination. The reading, spelling, and arithmetic, then nearly on a level with those subjects in other schools, are now below the average. Several neat papers on Bible knowledge were done by the first class. Instruction in military drill had *not* commenced. The Mistress' register of the girls attendance, kept on ruled paper, does not contain all the required information.
- Lyttelton Wesleyan school March 16 ... Present, 55 ... Improving as to the attendance, age, and efficiency of the pupils, although the present attendance is reduced by low fever.
- Pigeon Bay March 17, 18 Present, 22 ... Satisfactory, except as to the reduced attendance. The ventilation seemed insufficient.
- Akaloa March 19 Middling. Very little improvement since the December examination. The new desks are an improvement upon the old ones. Owing to the distance from Port, and to the disappointment by the person employed to repair the windows, they are still broken; and the number of broken panes has increased.
- Okain's Bay March 20 ... Present, 19 ... Satisfactory, except as to the very reduced attendance.
- Akaroa March 23 ... Present, 40 ... Improving.
- Duvauchelle's Bay ... March 24 ... Present, 27 ... Improving.
- The details of each examination are fully stated in the journal.

I have the honour to be, Sir,

Your obedient servant,

J. P. RESTELL,

Inspector of Schools.

LOWER HEATHCOTE SCHOOL—SPECIAL REPORT.

Some of the suggestions made at the recent examination had already received the attention of the Master, who promises to carry out further suggestions. The state of the playground, fenced, neatly laid out with borders, and planted with trees and shrubs, reflects credit upon the schoolmaster.

The zinc water-piping, conveying the water along the eaves of the roof, and the upright pipe connected with it, require alteration, so as *not* to convey the water to the hollow formed by its fall at the base of the chimney.

Blinds or curtains are much wanted for three of the four northern windows; a blind for one window having been given by one resident.

Want of funds has prevented the previous obtaining of a fender; but as the committee are said to retain £25 of the annual grant of £75 in aid of the maintenance of the school, it is to be hoped that they will shortly be in a position to pay for requisite materials and repairs.

APPENDIX B.

LIST OF SCHOLARS TO WHOM PRIZES HAVE BEEN AWARDED BY THE BOARD.

Robert Hay	Pigeon Bay School.
William Hall	" "
Walter Prosser	Okain's Bay School.
Mary Ann Ware	" "
George Griffin	Christchurch Wesleyan School.
Thomas Rutland	" "
George Reese	St. Paul's School, Papanui.
Martha Goodwin	" "
Walter Bean	Kaiapoi Church of England School.
Charles Bean	" "
William Heney	" "
Maria Hinett	Lyttelton Church of England School.
Jane Webb	Lyttelton Wesleyan School.
Frederick Horrell	Rangiora Boys' School.
Arthur Percival	" "
Mary Ann Alexander	St. Michael's School, Christchurch.
Frederick Charles Hawley	" "
Elizabeth Allen	St. Andrew's School, Christchurch.
Rosina Gray	Roman Catholic School, Christchurch.
Helen Bartrum	Ashley Bank School.
Thomas Hill	Riccarton School.
Matthew Dalziel	Fernside School.
George Scott Cox	Eyreton School.
Robert Booth	Woodend School.
Julia Seager	Upper Heathcote School.
Agnes Dodd	Saltwater Creek School.

CHRISTCHURCH :

Printed, under the authority of the Provincial Government of the Province of Canterbury, at the *Lyttelton Times* Office, Gloucester street, by **CROSBIE WARD** and **WILLIAM BEEVES**, Official Printers for the time being to the said Government.