



NEW ZEALAND  
GOVERNMENT GAZETTE  
PROVINCE OF CANTERBURY.

---

Published by Authority.

---

VOL. XVIII.

FRIDAY, NOVEMBER 17, 1871.

No. LI.

---

REPORT  
OF THE  
BOARD OF EDUCATION,  
FOR THE  
PERIOD ENDING SEPTEMBER 30, 1871.

---

TO HIS HONOR THE SUPERINTENDENT.

SIR,

The Board of Education, in accordance with the provisions of "The Education Ordinance, 1871," has the honour to present its Report for the period ending the 30th September, 1871, the last Annual Report containing complete Statistical information up to the 31st December, 1870.

The total number of schools receiving aid from the Board during the above-mentioned period was 68.

In addition to these, two Superior Schools are in receipt of Government assistance.

VOL. XVIII., No. 51.

The total number of attendants at the Ordinary Schools during the September Quarter was, approximately, 3913 (1).

The average daily attendance of scholars for the same quarter was, approximately, 2808 (1).

The total amounts paid out of the Treasury on account of Education, for the nine months ending 30th September, were distributed as follows:— (2)

Maintenance of Superior Schools	...	...	£375	0	0
"    Ordinary Schools	...	...	4831	10	4
Scholarships	...	...	675	8	0
Establishment of New Schools	...	...	2367	3	8
Expenses of Department	...	...	500	2	3
Contingencies	...	...	139	19	2
			<hr/>		
			£8,889	3	5

Sums amounting to ~~£505~~ 7s. 11d., subscribed by the residents in new districts, have been lodged in the Treasury.

(3) The following New Educational Districts have been proclaimed, viz.:—Weeden, Mandeville Plains, West Melton, New Brighton, Geraldine, Gebbie's Valley, Ashburton and LeBon's Bay. A school has already been started in the Mandeville Plains District. The schools that have come into operation in previously proclaimed districts, are those of Kowai Pass, Killinchy, and Greenpark.

A meeting has been held at Little River, with a view to the establishment of an Educational District.

Memorials having the same object in view have been received from the residents of Greendale (near the River Selwyn), Kaiapoi Island, Harewood Road, Tai Tapu, West Eyreton, Waihi Bush, and from the residents of a portion of the Mount Grey Downs District. The Board anticipates that, during the current year, a considerable number of new schools will come into operation.

Schools at Robinson's Bay and Pleasant Point have received assistance as Special Grant Schools.

All districts which were under the control of elective committees previous to the date on which "The Education Ordinance, 1871," came into force, have been re-proclaimed, and in some cases the original boundaries have been altered in conformity with the provisions of the new Ordinance. Districts have also been proclaimed for the schools of Akaroa, Ashley Bank, and Leithfield, where the school sites were vested in the Superintendent.

The Board has insured all school buildings not previously insured by Local Committees.

Books and apparatus, to the value of £458 8s. 5d., have been disposed of out of the Educational Depot.

In the month of June last the following public scholarships were thrown open to competition:—(A) Two scholarships open to all boys under seventeen years of age, tenable for two years; (B) Four scholarships open to all boys under sixteen years of age (except to the then holders of the Government Open Scholarships of 1866), tenable for three

(1) See Appendix A. (2) See Appendix B. (3) Part of the following information has been given in the last Annual Report.

years; (C) Four scholarships open to all boys under eleven years of age. For the scholarships Class A, five boys competed; for the scholarships Class B, fifteen boys; for the scholarships Class C, thirty-six candidates underwent a preliminary examination by the Inspector. Of these, the sixteen boys who passed the most satisfactory examination were selected to compete in the final examination.

The scholarships were awarded as follows:—

Class A.—E. H. Bell, Christ's College Grammar School.  
           H. Cotterill,       "       "       "       "  
 Class B.—A. W. Bell,       "       "       "       "  
           W. H. Atack,       "       "       "       "  
           H. Wilkinson, High School, Christchurch.  
           W. P. Reeves, Christ's College Grammar School.  
 Class C.—B. M. Connal, Wesleyan School, Christchurch.  
           G. Wedge,               "       "       "  
           H. F. Wagstaff, Melford House, Rangiora.  
           G. F. Bridge, Mrs. Ross' School.

On account of the satisfactory manner in which A. W. E. Stiffe passed the examination for scholarships Class A., a scholarship for one year was granted to him.

These scholarships dated from 1st July, 1871.

Of the nineteen scholars mentioned in the Report of 31st March last, the scholarships of the seven boys who gained theirs in the years 1866 and 1867, were made terminable on the 30th September. Of these seven boys, H. Cotterill, W. P. Reeves, and W. H. Atack succeeded in gaining new scholarships. A. W. E. Stiffe, the holder of the extra scholarship, was also a scholar of 1866.

The names of the holders of scholarships during the period ending 30th September, were:—

Name of Scholar.	School from which First Scholarship was gained.	Date of First Scholarship.	School from which Second Scholarship was gained.	Date of Second Scholarship.	Schools at which Scholar is being now Educated.
H. Cotterill ...	Christ's College Grammar School	1866*	Christ's College Grammar School	1871	Christ's College Grammar School
G. Merton ...	Rangiora Boys' School ...	1866*	—	—	—
A. W. E. Stiffe ...	Christ's College Grammar School	1866*	Christ's College Grammar School	1871	Christ's College Grammar School
J. E. Wilkinson ...	High School, Christchurch ...	1866*	High School, Christchurch ...	1871	High School, Christchurch
W. H. Atask ...	High School, Christchurch ...	1867*	Christ's College Grammar School	1871	Christ's College Grammar School
J. A. Caygill ...	Wesleyan School, Christchurch...	1867*	—	—	—
C. E. Jennings ...	Papanui Church School ...	1867*	—	—	—
W. P. Reeves ...	Christ's College Grammar School	1867*	Christ's College Grammar School	1871	Christ's College Grammar School
R. Triggs ...	Papanui Church School ...	1867*	—	—	—
W. S. Bean ...	Kaiapoi Church School ...	1868	—	—	Christ's College Grammar School
A. Dawson ...	Prebbleton School ...	1868	—	—	High School, Christchurch
L. Gibson ...	Christ's College Grammar School	1868	—	—	Christ's College Grammar School
W. Hartland ...	Christ's College Grammar School	1868	—	—	Christ's College Grammar School
A. Merton ...	Rangiora Boys' School ...	1868	—	—	Christ's College Grammar School
A. J. Parsons ...	Wesleyan School, Christchurch...	1868	—	—	Christ's College Grammar School
W. C. Bean ...	Kaiapoi Church School ...	1870	—	—	Christ's College Grammar School
A. E. Bird ...	High School, Christchurch ...	1870	—	—	High School, Christchurch
W. H. Herbert ...	Templeton School ...	1870	—	—	Christ's College Grammar School
H. J. Knowles ...	Rev. J. D. Fergusson's School ...	1870	—	—	Rev. J. D. Fergusson's School
E. H. Bell ...	Christ's College Grammar School	1871	—	—	Christ's College Grammar School
A. W. Bell ...	Christ's College Grammar School	1871	—	—	Christ's College Grammar School
G. F. Bridge ...	Mrs. Ross' School ...	1871	—	—	Christ's College Grammar School
B. M. Connal ...	Wesleyan School, Christchurch...	1871	—	—	Wesleyan School, Christchurch
H. F. Wagstaff ...	Melford House, Rangiora ...	1871	—	—	Melford House, Rangiora
G. Wedge ...	Wesleyan School, Christchurch...	1871	—	—	Wesleyan School, Christchurch

\* These Scholarships terminated on 30th September.

Eight candidates for teacherships have received certificates of fitness from the Inspector of Schools. Of these certificates, one is of the 2nd Class, three are of the 3rd Class, and the remainder qualify the recipients for special appointments.

Quarterly Reports from the Inspector respecting the efficiency of the schools, the numbers in attendance, &c., have been published periodically in the *Government Gazette*.

The Monthly Reports of the Inspector are appended.

W. MONTGOMERY,  
CHAIRMAN.

October, 1871.

TABLE OF ATTENDANCE, &amp;c., FOR QUARTER ENDING SEPTEMBER 30, 1871.

	Total Attendance.	Daily Average Attendance.	School Fees Paid.		
			£	s.	d.
Akaroa ... ..	47	40	18	11	0
Arowhenua ... ..	91	52	18	18	2
Ashley Bank ... ..	42	34	4	16	0
Avonside ... ..	75	58	23	8	0
Broadfield ... ..	51	36	11	13	6
Christchurch—St. Michael's... ..	99	63	34	3	6
"  Addington ... ..	31	23	6	16	0
"  St. Luke's ... ..	99	66	30	9	0
"  St. John's ... ..	150	101	45	10	0
"  Wesleyan ... ..	201	138	50	17	6
"  Roman Catholic (Boys') ... ..	91	58	26	8	0
"  Convent ... ..	113	91	44	15	6
"  St. Andrew's... ..	68	41	23	0	0
Courtenay ... ..	25	16	6	18	6
Cust .. ..	67	42	5	5	0
Duvauchelle's Bay ... ..	42	33	0	15	3
Eyreton ... ..	34	28	6	6	6
Fernside ... ..	57	50	8	10	0
Flaxton ... ..	66	54	14	15	0
Governor's Bay ... ..	10	7	15	2	0
Governor's Bay North ... ..	16	13	8	2	0
Greenpark ... ..	26	22	10	6	0
Halkett ... ..	34	23	6	5	9
Halswell ... ..	50	40	21	4	0
Harewood Road... ..	39	28	10	11	6
Heathcote Valley ... ..	69	46	20	13	10
Hororata ... ..	24	15	7	10	0
Kaiapoi Church ... ..	122	95	45	12	3
"  Wesleyan ... ..	90	69	20	6	5
Killinchy ... ..	37	26	8	5	6
Kowai Pass ... ..	26	20	7	11	0
Leeston ... ..	51	45	22	2	0
Leithfield ... ..	53	38	10	5	0
Lincoln ... ..	35	23	9	4	11
Loburn ... ..	36	28	7	1	0
Lower Heathcote ... ..	97	74	27	14	8
Lyttelton—High ... ..	71	57	57	4	1
"  Church ... ..	104	69	36	4	0
"  Wesleyan ... ..	60	40	14	7	6
Mandeville Plains ... ..	33	26	5	1	0
Mount Grey Downs ... ..	59	38	11	1	0
North Kowai ... ..	29	20	...	...	...
North Road ... ..	28	16	13	5	0
Okain's Bay ... ..	35	29	12	12	0
Oxford ... ..	55	36	17	14	9
Papanui Church ... ..	122	89	38	8	0
Pigeon Bay ... ..	35	27	12	12	0
Pleasant Point* ... ..	16	14	10	0	0
Prebbleton ... ..	32	23	11	11	9
Rangiora (Boys') ... ..	51	44	9	13	9
"  (Girls') ... ..	62	50	14	4	6
Riccarton ... ..	97	71	26	5	0
Robinson's Bay ... ..	27	17	10	12	1
Saltwater Creek... ..	53	32	6	4	6
St. Albans ... ..	79	49	17	10	6
Scotsburn ... ..	13	10	10	11	6
Southbridge ... ..	48	31	16	6	6
South Selwyn ... ..	55	39	10	16	0
Springston ... ..	49	32	8	18	0
Stoke ... ..	34	26	5	8	0
Tai Tapu ... ..	38	31	21	10	0
Templeton ... ..	88	57	12	19	0
Timaru ... ..	80	56	20	3	0
Upper Heathcote ... ..	31	23	8	4	4
Waihi Crossing ... ..	52	42	21	3	6
Waimate ... ..	56	33	9	10	6
Woodend† ... ..	57	45	14	1	0
	3913	2808	£1123	17	0

\* Returns from this school not received. The number of attendants and amount of school fees are therefore estimated.

† This school was conducted during the past quarter by a master whose appointment had not been sanctioned by the Board.

## STATEMENT OF PAYMENTS IN DETAIL.

## MAINTENANCE OF SUPERIOR SCHOOLS.

	£	s.	d.
Christ's College Grammar School	187	10	0
High School, Christchurch	187	10	0
	<u>£375</u>	<u>0</u>	<u>0</u>

## MAINTENANCE OF ORDINARY SCHOOLS.

	£	s.	d.		£	s.	d.
Akaroa School	75	0	0	Lyttelton Wesleyan School	75	0	0
Arowhenua do.	100	15	0	Mount Grey Downs School	127	13	0
Ashley Bank do.	75	0	0	North Kowai do. (h)	89	8	4
Avonside do.	73	13	11	North Road do.	60	0	0
Broadfield do.	101	18	0	Okain's Bay do.	75	0	0
Christchurch Church Schools	135	0	0	Oxford do.	51	1	0
Do. Wesleyan School	75	0	0	Papanui Church do.	75	0	0
Do. Roman Catholic Boys' do.	52	10	0	Do. Wesleyan do.	80	0	0
Do. Convent do.	37	10	0	Pigeon Bay do. (i)	104	13	4
Do. St. Andrew's do.	60	0	0	Prebbleton do.	100	0	0
Courtenay School	81	5	0	Rangiora Boys' do.	75	0	0
Cust do.	98	15	0	Do. Girls' do.	37	10	0
Duvauchelle's Bay do.	60	0	0	Riccarton do.	75	0	0
Eyreton do. (a)	106	1	8	Saltwater Creek do. (l)	26	5	0
Fernside do. (b)	108	5	4	St. Albans do. (n)	100	0	0
Flaxton do.	123	0	0	Scotsburn do.	15	0	0
Governor's Bay do.	33	15	0	Southbridge do. (j)	84	15	0
Governor's Bay North do.	56	5	0	Springston do.	107	0	0
Greenpark do. (l) (c)	21	5	0	Stoke do. (k)	85	6	8
Halkett do. (d)	71	5	0	Tai Tapu do.	62	16	0
Halswell do.	98	13	4	Templeton do.	125	15	0
Harewood Road do.	60	0	0	Timaru do.	129	15	0
Heathcote Valley do.	119	5	0	Upper Heathcote do.	45	0	0
Hororata do. (e)	76	13	4	Waihi do.	105	0	0
Kaiapoi Church do.	75	0	0	Waimate do.	95	15	0
Do. Wesleyan do.	75	0	0	Woodend do.	80	0	0
Killingly do. (l)	21	6	8	Maintenance of Pupil Teacher,			
Kowai Pass do. (m) (f)	21	17	6	Halswell School	6	5	0
Læston do.	99	19	0	Printing of Annual Report	45	15	0
Leithfield do.	75	0	0	Maps showing new Educational			
Lincoln do. (g)	102	10	0	Districts	11	5	0
Little Akaloa do.	13	0	0	Insurance of School Buildings	23	18	3
Loburn do.	95	10	0				
Lower Heathcote do.	105	15	0				
Lyttelton High do.	75	0	0				
Do. Church do.	75	0	0				
					<u>£4831</u>	<u>10</u>	<u>4</u>

(a) £10 13s. 4d. still due. (b) £6 2s. 8d. still due. (c) £3 6s. 8d. still due. (d) £17 still due. (e) £8 6s. 8d. still due. (f) £5 still due. (g) £10 still due. (h) £8 6s. 8d. still due. (i) £10 6s. 8d. still due. (j) £32 still due. (k) £3 13s. 4d. still due. (l) School only open one quarter. (m) School open a little more than one quarter. (n) Grant for a period of twelve months.

## SCHOLARSHIPS.

	£	s.	d.
19 Scholars, for three quarters, at rate of £40 per annum	570	0	0
On account of Scholarships of W. S. and W. C. Bean, due from 1870	10	0	0
Expenses of examination, travelling, and other incidental expenses	54	3	0
Printing	41	5	0
	<u>£675</u>	<u>8</u>	<u>0</u>

## ESTABLISHMENT OF NEW SCHOOLS.

	£	s.	d.	£	s.	d.
Broadfield—Erection of Master's House ... ..	120	0	0			
Sinking of Well ... ..	15	0	6			
	<hr/>			135	0	6
Educational Depôt—Amount paid for Books and Apparatus supplied to New Schools	61	5	11			
Due to Depôt from 1870 ... ..	4	0	11			
	<hr/>			65	6	10
Greenpark—Erection of Buildings ... ..				263	8	2
Halswell—Porch and Repairs ... ..				12	0	0
Heathcote Valley—Repairs to Schoolroom ... ..				5	0	0
Killinchy—Erection of Buildings ... ..				252	10	0
Kowai Pass—Erection of Buildings ... ..				247	9	4
Mandeville Plains—Erection of Buildings ... ..				256	5	0
Mount Grey Downs—Sinking Well ... ..				25	0	0
North Kowai—Painting of Buildings ... ..	10	11	6			
Due from 1870 ... ..	9	13	3			
	<hr/>			20	4	9
Selwyn—Erection of Buildings ... ..				237	5	0
Templeton—Enlarging Schoolroom ... ..				60	0	0
Timaru—Enlarging School Buildings ... ..				355	0	0
Waihi—Erection of Buildings—Balance ... ..	37	12	6			
Due from 1870 ... ..	50	0	0			
	<hr/>			87	12	6
Weeden—Erection of Buildings (on account) ... ..				104	1	7
West Melton—Erection of Buildings ... ..				241	0	0
	<hr/>			£2367	3	8

## EXPENSES OF DEPARTMENT.

	£	s.	d.
Inspector of Schools—Salary ... ..	262	10	0
"    "    Travelling Expenses* ... ..	60	11	9
Secretary to Board—Salary ... ..	150	0	0
"    "    Travelling Expenses ... ..	27	0	6
	<hr/>		
	£500	2	3

## CONTINGENCIES.

	£	s.	d.
Printing Expenses ... ..	92	0	7
Assistance in Office and Depôt ... ..	17	10	0
Prizes for Scholars in Ordinary Schools ... ..	20	4	6
Expenses in connection with importation of Books ... ..	6	16	3
Miscellaneous ... ..	3	7	10
	<hr/>		
	£139	19	2

## PAYMENT OF SUMS INTO PROVINCIAL TREASURY.

	£	s.	d.
By Residents in Broadfield District ... ..	22	10	0
"    Geraldine District ... ..	20	0	0
"    Greenpark District ... ..	64	2	4
"    Killinchy District ... ..	67	10	0
"    Mandeville Plains District ... ..	62	6	8
"    Selwyn District ... ..	59	12	6
"    Templeton District ... ..	10	0	0
"    Timaru District ... ..	67	0	0
"    Weeden District ... ..	62	10	0
"    West Melton ... ..	69	16	5
	<hr/>		
	£505	7	11

\* Of this amount £10 5s. 9d. was payable in 1870.

## BOARD OF EDUCATION.

(MARCH 31—APRIL 27, 1871.)

## INSPECTOR'S MONTHLY REPORT.

TO THE CHAIRMAN OF THE BOARD.

SIR,

I have the honour to submit a Summary Report on the schools inspected during the month.

- Lower Heathcote, Ferry Road* ... March 31 ... Present 55 ... In good order.
- Pigeon Bay* ... ... April 3 ... Present 7 ... Very heavy rain prevented the attendance of more than a few children. Examination postponed. The copybooks and other work inspected shewed considerable improvement.
- Duvauchelle's Bay* ... ... April 4 ... Present 46 ... There is an increase in the attendance. The cleanliness and order are highly commendable; the attainments, very elementary at present, are satisfactory. The buildings and premises have been repaired and improved.
- Akaroa*... ... April 5 ... Present 29 ... The subjects of instruction and the standard of attainment are at present very elementary. There appears to be fair promise of improved efficiency under the new master.
- South Selwyn* ... ... April 14 ... Present 32 ... The discipline has considerably improved, but the subjects of instruction are not, at present, well balanced; there is too wide a gap between the attainments of successive classes; the Bible Knowledge, Tables, and Arithmetic are fair; the other subjects less satisfactory.
- Scotsburn* .. ... April 17 ... Present 10 ... The registration is unsatisfactory for want of a proper register; the Bible Knowledge is deficient for want of bibles. The other attainments are fair, allowance being made for the protracted harvest and the unfavourable weather. A chimney has been built, and other improvements have been made in the building.
- Waihi Crossing* ... ... April 18 ... Present 39 ... New school; first visit. The attainments very moderate, but fair for the time and circumstances; some suggestions as to improved organization are made on the form of report. The buildings are far from satisfactory; there is no fireplace in the schoolroom, and the dwelling is only partly, and that badly, lined; a comfortless habitation, in which the chimneys smoke so as to prevent a fire on the coldest days.
- Timaru* ... ... April 19 ... Present 73 ... The general results are very satisfactory; the copybooks, however, are mostly too difficult for those using them; hence, although the books are clean and neat, the writing is less satisfactory than the other subjects. The "back-smoke" from the dwelling-house is a source of inconvenience in the schoolroom.

*Waimate* ... .. April 20 ... Present 49 ... Satisfactory on the whole, allowance being made for the long continuance of unfavourable weather. The Reading and Spelling should, however, be improved. The buildings are well painted, and are kept in good repair.

I have the honour to be, Sir,

Your obedient servant,

J. P. RESTELL,

Inspector of Schools.

## BOARD OF EDUCATION.

(APRIL 28—MAY 25, 1871.)

### INSPECTOR'S MONTHLY REPORT.

TO THE CHAIRMAN OF THE BOARD.

SIR,

I have the honour to submit a Summary Report on the examinations and inspections during the month.

*Pigeon Bay School* ... .. May 4 ... Present 28 ... The classification is unequal as to the numbers. The subjects of instruction fair, except the Arithmetic, rather inaccurate.

*Okain's Bay School* ... .. May 5 ... Present 34 ... The discipline, registration, and the progress are exemplary; the attainments very creditable.

*Avonside* (Inspected only.) ... May 8 ... Present 66 ... In good order.

*St. John's Boys' School* ... .. May 9 ... Present 78 ... The schoolroom is not large enough for the attendance; the discipline and the course of instruction appear to be satisfactory. N.B.—First examination.

*St. John's Girls' School*... .. Same day; inspected only. The girls are in excellent order, very clean and neat; the general arrangements and the course of instruction appear to be satisfactory.

*North Road School* ... .. May 15 ... Present 11 ... The reduced attendance is much to be regretted; the discipline and progress of those present are very satisfactory.

## BOARD OF EDUCATION.

MAY 26—JUNE 29, 1871.)

## INSPECTOR'S SUMMARY REPORT.

TO THE CHAIRMAN OF THE BOARD.

SIR,

I have the honour to submit a Summary Report on the schools examined during the month. The Board's "Form of Report" introduced on a former round of examination has been used for a second time on this occasion.

It is satisfactory to observe, in several instances, the improved programme of work gone over, and the greater degree of accuracy in most of the schools examined.

*The Southbridge School*, probably the best country school in the Province, has excelled in both of these respects; the course is a judicious one, not more work is set down than the pupils can successfully achieve; without any high flight in any special subject, the work is well balanced; the attainments and efficiency—the range of acquirement and amount of accuracy—fairly fulfil a programme above the average of country schools.

The school at *Governor's Bay North* has a very reduced attendance, but the progress made by this small number is highly creditable to the master and his pupils. It is important to notice this improvement, because until the action of the Board after the last examination, six months ago, the school appeared to have fallen off since the change of masters.

*The Kowai Pass School* is a new one under the former master at Courtenay. The first-class includes some of his children and former pupils, and therefore affords no criterion of the progress here; but the remarkable accuracy of the lower classes is very commendable, and the correctness of their pronunciation and reading proves that that acquirement is attainable even by very young children, and that whatever the diction and accent of their homes, they can be taught to properly pronounce the words of their lesson-books, that which teachers of inferior energy give up as a hopeless task. The prevalence of such patois as "this sén-wich-is-sittin'-ón-ér-raigs" indicates either, or both, the carelessness and ignorance of a teacher who does not understand and does not appreciate the corrections and suggestions made on the day of examination.

The improvement in the *Lower Heathcote School* since the appointment of the present master and mistress, is in the highest degree satisfactory; the excellent order of the premises and of the external and internal arrangements, the improved appearance of the school and of the children as to courtesy, order, and cleanliness, and the superior efficiency reflect the highest credit upon the present committee and teachers. The only drawback to the satisfaction now felt is the regret that the former inefficiency was not corrected, and such desirable changes made long ago.

*The Hororata, Leeston*, and other schools deserving special commendation will be noticed as they occur in the detailed report.

## SCHOOLS EXAMINED.

*Avonside* ... .. May 29 ... Present 64 ... Improving.

*St. Andrew's* ... .. May 30 ... Present 54 ... Very satisfactory.

*St. Albans* ... .. May 31 ... Present 66 ... Middling. Visiting this school casually on Friday, May 26, the register had been only partly made up—part of the attendance entered—on the previous Monday morning, and not since. It appears by his own admission to be the habit of the master to enter the attendance at intervals from memory, a thing impossible to be done correctly in any school, especially in a large one. The discipline and amount of control are imperfect. The attainments are very meagre; the children cannot do the work set down to them. Uncorrected errors of diction have become so habitual as to characterise the school; not one child here and there but nearly the whole class had defects far less prevalent in the rest of the schools. The amount of inaccuracy is surprising.

*Lower Heathcote* ... .. June 1 ... Present 71 ... The improved efficiency of the school is stated above.

*Christchurch Roman Catholic Boys' School.* Visited but not examined. June 2 Present 55. In good order.

*Christchurch Roman Catholic Girls' and Infants'.* Same day. Present 90. In good order.

*Governor's Bay North* ... .. June 5 ... Present 9 ... The attendance is small, but the work is very satisfactory. The organization and discipline are very good; the improvement since last examination is very marked; the attainments above the average of children of the same age.  
N.B.—The chimney is in dangerous disrepair.

*Governor's Bay* ... .. June 6 ... Present 7 ... Satisfactory.

*Tai Tapu* ... .. June 7 ... Present 29 ... Satisfactory.

*Greenpark* ... .. June 8... Very wet... Present 7 (by the register).

„ ... .. June 9 ... Still wet ... Present 11.

The desks which had been arranged to suit congregational purposes were put into proper order to-day.

*Lincoln* ... .. Same day ... Present 6... Registers satisfactory.

*Prebbleton* ... .. June 9... Wet weather... Present 13... Improved.

*Broadfield* ... .. June 12 ... Wet morning ... Present 39 ... Considerably improved.

*Springston* ... .. June 13 ... Present 27 ... Satisfactory in most respects, but the classification may be improved.

*Leeston* ... .. June 14 ... Present 37 ... Satisfactory.

*Southbridge* ... .. June 15 ... Present 36 ... Very satisfactory, as stated above.

<i>Killinchy</i>	...	...	...	June 16	...	Present 35	...	New school. The present arrangements are good; the school has made a satisfactory beginning, with a fair prospect of success.
<i>Hororata</i>	...	...	...	June 19	...	Present 22	...	Satisfactory.
<i>Kowai Pass</i>	...	...	...	June 20	...	Present 18	...	New school; very creditable as stated above.
<i>Courtenay</i>	...	...	...	June 21	...	Present 21	...	Satisfactory.
<i>Halkett</i>	...	...	...	June 22	...	Present 35	...	The improvement since last examination is very creditable.
<i>Templeton</i>	...	...	...	June 23	...	Present 47	...	Recommencing after the enlargement of the school; superior organization gives promise of increased efficiency.

Two candidates for masterships have been examined, one of them having had no previous experience as a teacher, and having received an inferior education, has failed to obtain a certificate; the other, Charles James Cassaigne, has had some experience and practice in the Colony of Victoria; and having a considerable aptitude for teaching, has obtained a third-class certificate of fitness, equivalent to one for the charge of a country school of about twenty-five children.

It is highly desirable to regulate the course of instruction of James Gordon, or any other pupil-teacher who may be employed under the Board; the Pupil-Teachers' Broad Sheet published by the Committee of Council on Education may prove an available guide in this respect.

I have the honour to be, Sir,

Your obedient servant,

J. P. RESTELL,

Inspector of Schools.

---

## BOARD OF EDUCATION.

(JUNE 30—JULY 27, 1871.)

---

### INSPECTOR'S MONTHLY REPORT.

---

TO THE CHAIRMAN OF THE BOARD.

SIR,

I have the honour to submit a Summary Report on the schools examined during the month.

There is considerable improvement in the general efficiency. The attendance of parents and members of committee at most of the examinations indicates the amount of local interest taken in each school, and generally in the progress of education.

## SCHOOLS EXAMINED.

<i>Flaxton</i>	...	...	...	July 3	...	Present 45	...	Satisfactory.
<i>Fernside</i>	...	...	...	July 4	...	Present 38	...	Satisfactory.
<i>Stoke</i>	...	...	...	July 5	...	Present 36	...	The order fair; the registers satisfactory; writing good; but the work set down in the programme supplied is of a lower and more elementary standard than might reasonably be expected; and the programme itself is very imperfectly fulfilled; there is, however, reason to hope for improvement by next examination. The room is cold and comfortless for want of a fire; the chimney is said to smoke whenever a fire is lighted.

NOTE.—Since the chimneys so generally prove to be useless, either being blown down or smoking, or failing to diffuse warmth; it may be advisable to decide on some other means of warming the schoolroom.

*Cust* ... .. July 6 ... Present 48 ... Satisfactory, allowance being made for the temporary want of an assistant or a pupil-teacher.

*Oxford* ... .. July 7 ... Present 34 ... There is a marked improvement in the attainments and efficiency; but the attendance, so very disproportionate to the population of Oxford and Harewood, shows that the school is not in a sufficiently central position. The interior of the schoolroom has been improved, but the state of the premises out of doors requires attention.

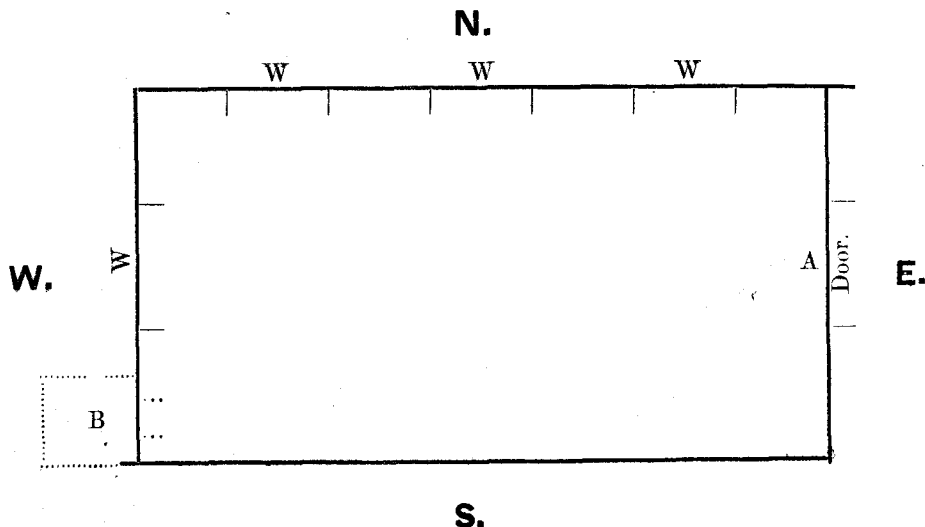
*Eyretton* ... .. July 10 ... Present 25 ... Satisfactory as to the attainments, but some repairs are necessary both in the schoolroom and out of doors.

## SPECIAL REPORT.

*Selwyn Station School* ... .. July 15 ... Present 11, with fifteen names on the list of attendants.

The schoolroom is situated on an unfenced quarter-acre section, near the Railway Station. There is some intention of procuring another quarter-acre adjoining. A side school here appears to be very requisite, one to be conducted by a mistress who could bring on the girls and the younger boys; the distance of about four miles to the Selwyn District School is too far for them.

The present schoolroom is of suitable dimensions—(about 32ft. x 17ft.); it requires to be lined and provision to be made for warming it, as there is neither stove nor fireplace. The position of the door should be altered, and a porch should be erected.



Suggested that the door be removed from A to B, and a porch erected there. The western window might be closed up.

The school is at present conducted by a temporary teacher, but when properly established and conducted by a suitable mistress, several more children will attend.

*Christchurch Roman Catholic Boys' School* ... July 17 ... Present 66 ... Satisfactory.

*Christchurch Roman Catholic Girls' and Infants'* ... July 18 ... Present 97 ... Very satisfactory; the order, neatness and accuracy are highly commendable.

*Riccarton* ... July 19 ... Present 79 ... Highly creditable, as the almost unassisted work of one master; the proficiency in most subjects is above the average. Where so much is so creditable, it is almost undesirable to criticise defects of accuracy, except as indicating the need of efficient assistance. Fluency and expression in the reading, and accuracy of thought in the arithmetic require cultivation; but more than at present cannot be done without an increase of the teaching power. The schoolroom is not large enough for the large and increasing attendance.

*Halswell* ... July 20 ... Present 42 ... Satisfactory.

*Papanui (St. Paul's)* ... July 21 ... Present 91 ... Satisfactory.

*Upper Heathcote* ... July 25 ... Present 22 ... The attendance above the average (19), has fallen off, being affected by schools in town and at Addington. A better schoolroom on a better site is required.

I have the honour to be, Sir,

Your obedient servant,

J. P. RESTELL,

Inspector of Schools.

---

## BOARD OF EDUCATION.

(JULY 28—AUGUST 31, 1871.)

---

### INSPECTOR'S MONTHLY REPORT.

---

TO THE CHAIRMAN OF THE BOARD.

SIR,

I have the honour to submit a Summary Report on the schools examined during the month. The details of each examination are stated in the Forms of Report annexed.

*Kaiapoi Church School* ... July 31 ... Present 93 ... Satisfactory.

*Saltwater Creek* ... Aug. 1 ... Present 27 ... Very deficient as to material; re-opened under a new master; improving as to discipline, but very backward, at present, as to attainments.

- Leithfield* ... Aug. 2 ... Present 44 ... Organization improvable; registers satisfactory; attainments much improved.
- North Kowai* ... Aug. 3 ... Weather unfavourable. Present 11; average attendance 14; the attainments satisfactory. Freedom from fees, without compulsory education, has reduced the attendance. Drainage and warming defective.
- Mount Grey Downs* ... Aug. 4 ... Present 38 ... The attainments of the highest class mostly satisfactory; lower class backward and imperfect; state of premises much improved.
- Kaiapoi Wesleyan School* ... Aug. 7 ... Present 71 ... Satisfactory.
- Ashley Bank* ... Aug. 8 ... Present 38 ... There is a very marked improvement in the conduct and efficiency of the school, but better desks are much wanted.
- Loburn* ... Aug. 9 ... Present 31 ... Very satisfactory.
- Stoke* ... (Casual visit) ... Aug. 10 ... Present 28  
Average attendance 23; register satisfactory; school in good order; drainage insufficient.
- Rangiora (Girls')* ... Aug. 11 ... Present 45 ... Satisfactory.
- North Road School* ... Aug. 14 ... Present 14 ... Average attendance 14. Satisfactory in general; defects as to premises, &c., stated in Form of Report.
- Rangiora Boys' School* ... Aug. 15 ... Present 45 ... Very satisfactory progress, but the buildings and premises in a very unsatisfactory condition, and the apparatus insufficient.
- Mandeville* ... Aug. 16 ... Present 29 ... New school; commencing satisfactorily as to the classification and general arrangements; but the buildings and furniture as per Form of Report.
- Addington Branch of St. Michael's School* ... Aug. 18 ... Present 23 (about the usual number). Not at present in a satisfactory state; the attainments inferior and imperfect even for a very elementary school. There is a great want of careful supervision and local interest.
- Lyttelton Wesleyan School* ... Aug. 21 ... Present 44 ... The attainments, judiciously limited to the age and capacity of the children, are moderate; but the care taken to secure accuracy and the successful result are commendable and satisfactory.
- Lyttelton Church of England* ... Aug. 22 & 24 ... Present 75 ... The large increase in the attendance is creditable to the exertions of the teachers; and there is great improvement in the tone and order of the school; but the attainments are at present, for the most part, unusually inaccurate, owing, perhaps, to too much of each subject having been attempted.
- Lyttelton High School* ... Aug. 23 & 24 ... Present 67 ... The attainments in general are a grade higher than those of the best ordinary schools, and a few pupils have entered on a superior course.

*Heathcote Valley School* ... Aug. 25 ... Present 33 ... The school has been conducted under great difficulties, but the general results are highly creditable; the degree of accuracy above the average.

Arrangements were made for the examination of one candidate for a mastership, who did not, however, attend, according to appointment.

I have the honour to be, Sir,  
Your obedient servant,

J. P. RESTELL,  
Inspector of Schools.

---

## BOARD OF EDUCATION.

(SEPTEMBER 5—OCTOBER 2, 1871.)

---

### INSPECTOR'S MONTHLY REPORT.

---

TO THE CHAIRMAN OF THE BOARD.

SIR,

I have the honour to submit a Summary Report on the schools examined during the month.

- St. John's Girls' School* ... Sept. 6 ... Present 38 ... Very satisfactory as to the discipline and attainments; but the schoolroom is not sufficiently separated from the Boys' school, and it is very cold and drafty.
- St. Luke's School* ... Sept. 7 ... Present 67 boys. A very satisfactory school; the discipline, order, and tone good; the attainments above the average; the improved and improving efficiency attest the devotedness of the master to his work. This is the more satisfactory because the master has been educated and "trained" in the Province.
- St. Michael's* ... Sept. 8 ... Present 70 ... The attendance increasing; school improving.
- St. John's Boys'* ... Sept. 12 ... Present 77 ... The crowded state of the room hinders organization; good order is, however, well kept up. The attainments are creditable; the written papers neat, but in some instances very inaccurate.
- Pigeon Bay School* ... Sept. 19 ... Present 26 ... Inferior. The state of the school does not warrant the continuance of the present high bonus, unless superior efficiency can be attained.
- Duvauchelle's Bay* ... Sept. 20 ... Present 36 ... Improving.
- Robinson's Bay* ... Sept. 20 ... Present 22 ... Satisfactory.
- Akaroa School* ... Sept. 21 ... Present 42 ... Improving.

*Okain's Bay* ... Sept. 22 ... Present 29 ... The small attendance is unsatisfactory. The standard of attainments, both as to proficiency and accuracy, is above the average of ordinary schools.

*St. Alban's School* ... Sept. 26 ... Present 59 ... Inferior. Under good organization, this school should attain a standard of efficiency equal to that of the best suburban school; it ought to be no whit behind the Ferry Road and Papanui schools.

*Christchurch Wesleyan School* ... Sept. 27 & 28 ... Present 151 ... Very satisfactory.

*Lower Heathcote School* (Ferry Road) Sept. 29 ... Present 85 ... Very satisfactory; the attendance and efficiency are increasing; additional accommodation will be required.

A short report, suggestive of a pupil-teacher system, has been submitted to the Board.

I have the honour to be, Sir,

Your obedient servant,

J. P. RESTELL,

Inspector of Schools.

---

CHRISTCHURCH :

Printed under the authority of the Provincial Government of the Province of Canterbury, at the *Lyttelton Times* Office, Gloucester Street, by WILLIAM REEVES, Official Printer for the time being to the said Government.

