

181



NEW ZEALAND
GOVERNMENT GAZETTE
PROVINCE OF CANTERBURY.

Published by Authority.

Vol. XIX.

TUESDAY, JULY 16, 1872.

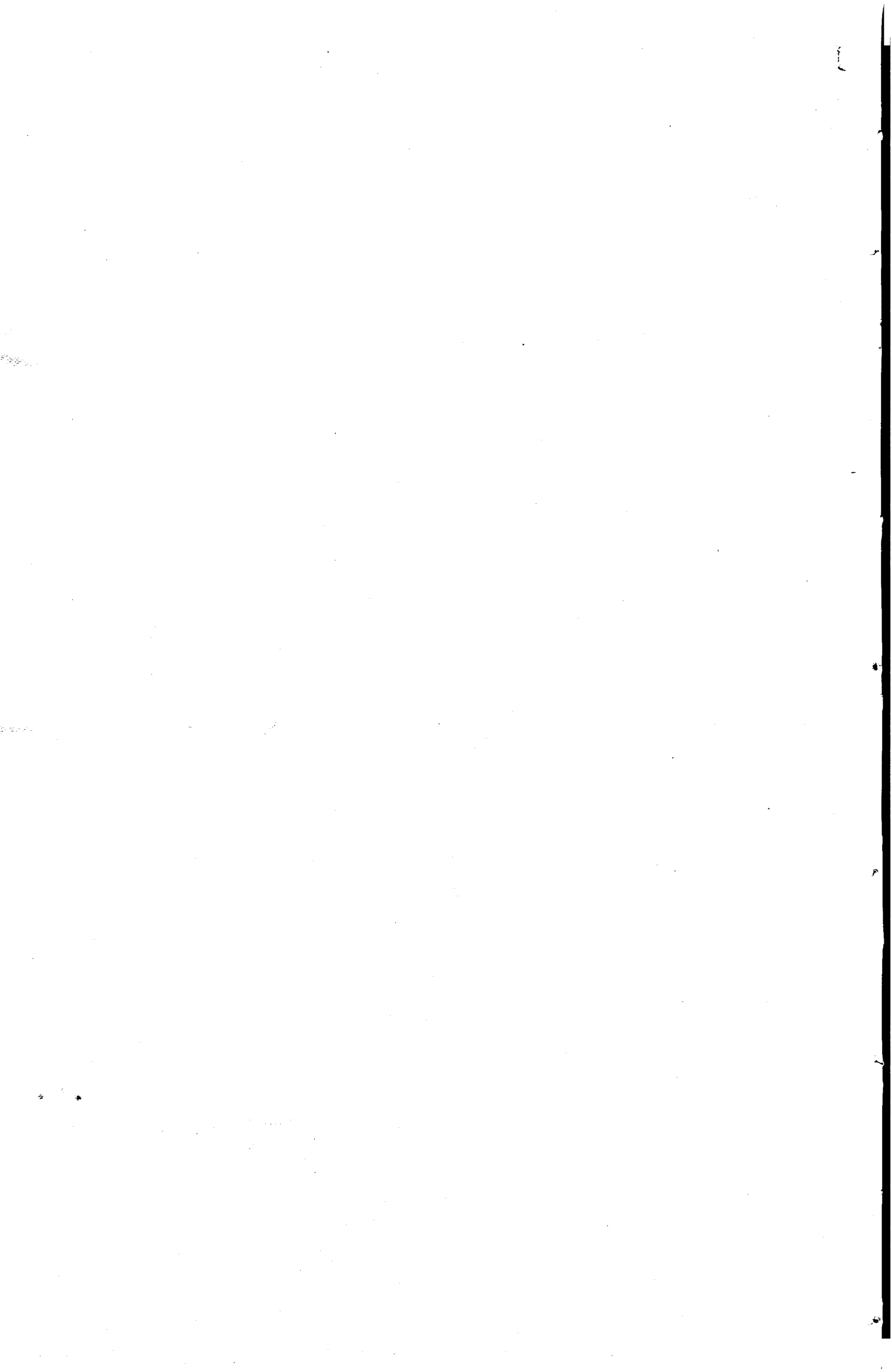
No. XXXVII.

THE FOLLOWING STATEMENT
OF
RECEIPTS AND EXPENDITURE
BY THE PROVINCIAL TREASURER,
FOR THE
QUARTER ENDING JUNE 30, 1872,
IS PUBLISHED FOR GENERAL INFORMATION.

WALTER KENNAWAY,
Provincial Secretary.

Provincial Secretary's Office,
Christchurch, July 12, 1872.

Vol. XIX., No. 37.



SCHEDULE A OF APPROPRIATION ORDINANCE—Continued.

RECEIPTS.			PAYMENTS.			
	£ s. d.	£ s. d.		£ s. d.	£ s. d.	
Brought forward		55,288 16 0	Brought forward		6,954 18 6	
			HOSPITALS—Continued.			
			<i>Timaru</i> —			
			Salaries	92 10 0		
			Rations, Wines, Drugs, Furniture, and Mis- cellaneous	142 16 0	235 6 0	
			ORPHAN ASYLUM.			
			Salaries	133 10 5		
			Provisions	144 14 7		
			Fuel, Clothing, and Con- tingencies	446 1 3	724 6 3	
			LUNATIC ASYLUM.			
			Salaries	478 16 3		
			Rations	353 9 9		
			Clothing, Furniture, Bed- ding, &c.	443 7 3		
			Fuel, Lighting, Repairs, &c. Library, Recreation, &c. ...	98 15 0		
			Medicine and Medical Com- forts	37 19 11		
			Miscellaneous	48 17 2		
				52 1 3	1,513 6 7	
			INSPECTION OF SHEEP.			
			Salaries	437 10 0		
			Contingencies	5 0 0	442 10 0	
			HARBOUR.			
			Chief Harbour Master, Harbour Pilot, Crew, &c. Contingencies—Repairs to Buoy and Moorings, and Maintenance of Light on Government Jetty	238 12 0		
			Compass Adjustment Ap- paratus	80 9 5		
			Inward Pilot and Crew	137 8 0		
				155 8 0	611 17 5	
			<i>Timaru</i> —			
			Harbour Master, Life Boat Service, Rocket Appara- tus, and Contingencies ...	131 1 7	131 1 7	
			<i>Sumner</i> —			
			Signalman, Maintenance of Boat, &c.	32 18 3	32 18 3	
			<i>Kaiapoi</i> —			
			Signalman, Maintenance of Boat, &c.	25 0 0	25 0 0	
			<i>Akaroa</i> —			
			Boat Davits, Buoys, &c. ...	1 10 0	1 10 0	
			MUSEUM.			
			Salaries	175 0 0		
			Incidental Expenses	32 7 6	207 7 6	
			DEPARTMENTAL MISCELLA- NEOUS.			
			Fuel	29 11 9		
			Messengers	37 10 0		
			Printing, Advertising, Sta- tionery, &c.	505 16 8		
			Expenses Provincial Audi- tor's Office	10 0 0		
			Expenses Executive Coun- cil	7 7 0		
			Dog Collars	158 7 0		
			Postage, Cartage, &c.	45 2 10		
			Painting, Cleansing, &c. ...	27 4 6		
			Health Officer	5 0 0		
			Insurance	100 10 0		
			Housekeeper's Department	43 15 0		
Carried forward		55,288 16 0	Carried forward	970 4 9	10,880 2 1	

SCHEDULE A OF APPROPRIATION ORDINANCE—Continued.

RECEIPTS.		PAYMENTS.			
	£ s. d.	£ s. d.	£ s. d.	£ s. d.	£ s. d.
Brought forward		55,288 16 0	Brought forward	970 4 9	10,880 2 1
			DEPARTMENTAL MISCELLANEOUS—Continued.		
			Suppression of Pleuro-pneumonia	59 2 6	
			Expenses of Witnesses in R. M. Courts	1 1 0	
			Rent of Warehouse, Lyttelton	30 0 0	
			Steward of Reserves	62 10 0	
			Contingencies	118 16 0	1,241 14 3
			PUBLIC WORKS DEPARTMENT.		
			Salaries	407 15 0	
			Travelling Expenses and Forage	38 7 0	
			Office Expenses	3 15 6	
			Contingencies	35 18 4	485 15 10
			RAILWAYS.		
			Working Expenses, including Wages, Stores, and Maintenance	11223 9 9	
			Repairs of Wharves and Jetties	8 11 0	
			Telegraph Heathcote to Lyttelton	50 0 0	
			Lighterage and Cartage	701 17 10	11,983 18 7
			PROVINCIAL GOVERNMENT WORKS.		
			Roads	377 1 6	
			Bridges and Culverts	200 0 0	
			Buildings	40 17 8	
			Police Buildings—Repairs	85 9 0	
			Clearing Avon	20 17 0	
			Contingencies	6 0 0	730 5 2
			PUBLIC PLANTATIONS.		
			Salaries	102 13 6	
			Fencing, Planting, &c.	24 11 2	127 4 8
			GENERAL MISCELLANEOUS.		
			Rangitata Ferry Subsidy	75 0 0	
			Waitaki Ferry Subsidy	56 5 0	
			Bealey Ferry Subsidy	12 10 0	
			Contingencies	69 13 4	
			Acclimatization Society	200 0 0	
			Literary Institutes and Public Libraries	25 0 0	438 8 4
			EDUCATION.		
			Superior Schools	62 10 0	
			Maintenance of Ordinary Schools	1671 15 11	
			Special Grants	55 10 11	
			Scholarships	170 0 0	
			Pupil Teachers	12 10 0	
			Salaries	134 5 5	
			Travelling Expenses, Members of Board	13 13 0	
			Departmental Travelling Expenses and Contingencies	125 5 10	
			Purchase of Books for Depot	27 6 6	2,272 17 7
Carried forward		55,288 16 0	Carried forward		28,160 6 6

SCHEDULE A OF APPROPRIATION ORDINANCE—Continued.

RECEIPTS.		PAYMENTS.			
	£ s. d.	£ s. d.	£ s. d.	£ s. d.	£ s. d.
Brought forward		55,288 16 0	Brought forward		28,160 6 6
Balance brought forward from 31st March, 1872...		7,813 12 10	GENERAL CONTINGENCIES ...	711 4 2	711 4 2
					28,871 10 8
			APPROPRIATION ORDINANCE, No. 2, 1872.		
			LEGISLATIVE.		
			Expenses of Members ...	299 13 0	299 13 0
			CHRISTCHURCH HOSPITAL.		
			Drugs, &c. ...	34 14 2	34 14 2
			DEPARTMENTAL MISCELLA- NEOUS.		
			Printing and Expenses of Select Committees, &c....	544 19 0	544 19 0
			GENERAL MISCELLANEOUS.		
			Refund of Pasturage Rent (A. Cox) ...	133 1 10	
			Volunteer Entertainment ..	83 0 0	216 1 10
			SPECIAL.		
			Waimakariri Bridge ...	12 19 6	12 19 6
					29,979 18 2
			Balance carried forward ..		33,122 10 8
		£63,102 8 10			£63,102 8 10

J. BESWICK,

Provincial Treasurer.

Provincial Treasury,
Christchurch, 4th July, 1872.

I have examined the above Accounts, and compared the several items with the Vouchers, and find the same to be correct.

J. OLLIVIER,

Provincial Auditor.

8th July, 1872.

SCHEDULE B OF APPROPRIATION ORDINANCE—Continued.

RECEIPTS.				PAYMENTS.			
	£	s.	d.		£	s.	d.
Brought forward				Brought forward	2,812	10	0
Balance brought forward from 31st March, 1872...	38,685	8	10				
	19,852	1	9				
				ROAD BOARDS—Continued.			
				Rakaia District	225	0	0
				Ashburton do.	75	0	0
				Raukapuka do.... ..	100	0	0
				Mount Peel do.	37	10	0
				Geraldine do.	125	0	0
				Levels do.	100	0	0
				Mount Cook district ...	125	0	0
				South Malvern do. ...	25	0	0
				East Malvern do.	100	0	0
				Lake Coleridge do. ...	12	10	0
							3,737 10 0
							14,086 11 5
				APPROPRIATION ORDINANCE, No. 2, 1872.			
				Orphan Asylum — Addi- tions	7	19	2
				Lunatic Asylum — Addi- tions	134	14	1
							142 13 3
				GRANT UNDER PAYMENTS TO "PROVINCES ACT, 1871."			
				Waimakariri Gorge Ferry Approaches	221	4	8
				Timaru Gaol	392	0	0
				LeBon's Bay Road	42	0	0
							655 4 8
							14,884 9 4
				Balance carried forward ...			43,653 1 3
	£58,537	10	7				£58,537 10 7

J. BESWICK,
Provincial Treasurer.

Provincial Treasury,
Christchurch, 4th July, 1872.

I have examined the above Accounts and compared the several items with the Vouchers, and find the same to be correct.

J. OLLIVIER,
Provincial Auditor.

8th July, 1872.

SCHEDULE C OF APPROPRIATION ORDINANCE—LOAN ACCOUNT.

RECEIPTS.				PAYMENTS.											
	£	s.	d.	£	s.	d.	£	s.	d.						
Released Sinking Fund	8,738	7	11				Northern Railway	6,714	7	3					
Sale of Road Steamer and Plant	325	10	6				Rakaia Bridge	1,335	4	4					
Grant under "Payments to Provinces Act, 1871"	3,296	16	10				Tunnel Works	582	19	5					
				12,360	15	3	Rolleston and Southbridge Railway	874	7	2					
Balance brought forward from March 31st, 1872				39,127	15	1	Screw Moorings, Timaru	216	10	2					
							Rails for Sidings, &c.	222	6	7					
										9,945	14	11			
							APPROPRIATION ORDINANCE, No. 2, 1872.								
							Northern Railway	614	13	0					
							Selwyn Railway Bridge	82	17	0		697	10	0	
							GRANT UNDER "PAYMENTS TO PROVINCES ACT, 1871."								
							Harbour Works	3,071	12	9					
												3,071	12	9	
							Balance carried down						13,714	17	8
													37,773	12	8
													£51,488	10	4

Provincial Treasury, Christchurch, 4th July, 1872.

J. BESWICK,
Provincial Treasurer.

I have examined the above Accounts, and compared the several items with the Vouchers, and find the same to be correct.
8th July, 1872.

J. OLLIVIER,
Provincial Auditor.

RAILWAY RENEWAL FUND.

RECEIPTS.				PAYMENTS.								
	£	s.	d.	£	s.	d.	£	s.	d.			
Balance brought forward from March 31, 1872				7,470	11	2	Balance carried forward			7,470	11	2

Provincial Treasury, Christchurch, 4th July, 1872.

Examined.
8th July, 1872.

J. BESWICK, Provincial Treasurer.
J. OLLIVIER, Provincial Auditor.

SUMMARY

OF RECEIPTS AND EXPENDITURE BY THE PROVINCIAL TREASURER, FOR THE QUARTER ENDING JUNE 30, 1872.

DATE.	RECEIPTS.				DATE.	PAYMENTS.					
1872. April 1	Balance brought forward from March 31, 1872—	£	s. d.	£	s. d.	1872. June 30	Schedule A—Appropriation Ordinances, Nos. 1 and 2, Ordinary Account...	£	s. d.	£	s. d.
	At credit of Schedule A	7,813	12 10				„ B—Ditto, Land and Works Account	14,884	9 4		
	„ „ B	19,852	1 9				„ C—Ditto, Loan Account	13,714	17 8		
	„ „ C	39,127	15 1				Balance carried down :—			58,579	5 2
	„ Railway Renewal Fund	7,470	11 2				At credit of Schedule A	33,122	10 8		
				74,264	0 10		„ Schedule B	43,653	1 3		
June 30	Schedule A—Ordinary Revenue	55,288	16 0				„ Schedule C	37,773	12 8		
	„ B—Land and Works Revenue	38,685	8 10				„ Railway Renewal Fund	7,470	11 2		
	„ C—Loan Account	12,360	15 3							122,019	15 9
				106,335	0 1						
				£180,599	0 11					£180,599	0 11

190

Provincial Treasury, Christchurch, 4th July, 1872.

J. BESWICK, Provincial Treasurer.

J. OLLIVIER, Provincial Auditor.

Printed under the authority of the Provincial Government of the Province of Canterbury, at the *Lyttelton Times* Office, Gloucester Street, by WILLIAM REEVES, Official Printer for the time being to the said Government.

CHRISTCHURCH :