

THE
GOVERNMENT GAZETTE
 OF THE
 PROVINCE OF MARLBOROUGH.

Published by Authority.

All Public Notifications which appear in this Gazette with any Official Signature thereunto annexed, are to be considered as Official Communications made to those persons to whom they relate, and are to be obeyed accordingly.

WILLIAM DOUGLAS HALL BAILLIE,
 Superintendent.

Vol. III.]

FRIDAY, OCTOBER 24, 1862.

[No. 44.]

PROVINCE OF MARLBOROUGH.

Crown Land Office,
 Picton, 7th October 1862.

APPPLICATION for DEPASTURING
 LICENSE, in accordance with the
 Land Regulations 1st July, 1856, received
 by the COMMISSIONER of CROWN LANDS,
 on the 2nd October, 1862.

J. T. Warren.	District — Queen Charlotte Sound.
	An Island in Queen Charlotte Sound, known as Pickersgill Island.
	Estimated Extent — Under 10,000 acres.
	Deposit Paid—£15.

COURTENAY KENNY,
 Commissioner of Crown Lands.

888

PROVINCE OF MARLBOROUGH.

Superintendent's Office, Picton,
 October 8th, 1862.

I HEREBY notify that SATURDAY,
 the 1st day of November next, being
 the ANNIVERSARY of this PROVINCE,
 will be a PUBLIC HOLIDAY, and that
 the Government Offices will be closed upon
 that day.

(Signed) W. D. H. BAILLIE,
 Superintendent.

088

PROCLAMATION

By WILLIAM DOUGLAS HALL BAILLIE,
 Esquire, Superintendent of the Pro-
 vince of Marlborough, in the Islands
 of New Zealand.

I, THE SUPERINTENDENT of the
 Province of Marlborough, do hereby
 proclaim that at noon on THURSDAY,
 the Twenty-seventh day of November next,
 the Commissioner of Crown Lands for this
 Province will, at the Crown Land Office,
 Picton, in this Province, put up to Auction
 and offer to Public Competition, under the
 provisions of the Land Regulations now
 in force within this Province, the Allot-
 ments of Town Land, Rural Land, and Pas-
 ture Land, that are specified in the Sche-
 dules hereunto annexed, at the upset prices
 mentioned therein.

Ten per cent. of the Purchase Money to
 be deposited at the sale, and the remainder
 within one month, or the deposit for-
 feited.

Given under my hand, and issued un-
 der the Public Seal of the Province,
 at the Superintendent's Office, Pic-
 ton, this Twenty-second day of Oc-
 tober, in the year of our Lord one
 thousand eight hundred and sixty-
 two.

W. D. H. BAILLIE,
 Superintendent.

SCHEDULE OF CLASS A.—TOWN LAND.

Section.	Town of Picton.			Upset Price.		
	A.	R.	P.	£	s.	d.
No. 133	0	1	0	20	0	0
134	0	1	0	25	0	0
381	0	1	0	20	0	0
708	0	1	0	25	0	0
709	0	1	0	25	0	0
710	0	1	0	25	0	0
711	0	1	0	25	0	0
716	0	1	0	30	0	0
717	0	1	0	30	0	0
837	0	1	0	20	0	0

SCHEDULE OF CLASS C.—RURAL LAND.

Section.	Queen Charlotte Sound.			Upset Price.		
	A.	R.	P.	£	s.	d.
Anikiwa.						
No. 95	72	2	0	39	17	6
Tua Marina.—Tua Marina Run.						
No. 1	21	0	0	11	6	0
3	17	0	0	17	0	0
4	18	0	0	18	0	0
Raydale Run.						
No. 6	83	0	0	45	13	0
7	86	0	0	47	6	0
Kaituna Valley.						
No. 122	79	2	0	41	15	0
Pelorus Sound.—Clova Bay.						
No. 3	45	0	0	45	0	0
Wakaretu Bay.						
Part 1 of 16.	20	0	0	20	0	0
Awatere.						
Major Newcombe's Run.						
No. 120	138	0	0	72	9	0
126	83	0	0	43	11	6
127	124	0	0	65	2	0
E. Fearon's Run.						
No. 85	127	0	0	65	1	9
86	163	0	0	83	10	9
87	248	0	0	127	2	0
Mrs. Stephens' Run.						
No. 98	80	0	0	44	0	0
99	58	0	0	31	18	0
100	62	0	0	34	2	0
101	69	3	0	38	7	3
102	52	0	0	28	12	0
103	55	0	0	30	5	0
104	58	0	0	31	18	0
105	80	0	0	44	0	0
106	80	0	0	44	0	0
107	67	0	0	36	17	0
108	30	0	0	16	10	0
109	93	0	0	51	3	0
110	90	0	0	49	10	0
111	90	0	0	49	10	0
112	87	0	0	47	17	0
Flaxbourne Run.						
No. 238	26	3	0	13	7	6
246	90	0	0	45	7	6
247	94	0	0	47	7	10
262	117	0	0	59	19	3
264	54	0	0	27	13	6
Waihopai.						
Summerlands Run.						
No. 52	143	2	0	74	2	10
55	144	1	0	74	10	7
56	123	3	0	63	18	9

SCHEDULE OF CLASS D.—PASTURE LAND.

Section.	Queen Charlotte Sound.			Upset Price.		
	A.	R.	P.	£	s.	d.
Watamonga.						
No. 92	132	0	0	39	12	0
Pehautangia.						
No. 94	174	0	0	43	10	0
Tua Marina.						
Raydale Run.						
No. 1	123	0	0	32	16	0
2	129	1	0	34	9	4
3	120	2	0	32	2	8
4	98	2	0	26	5	2
5	124	0	0	33	1	4
Tua Marina Run.						
No. 2	258	0	0	103	4	0
5	282	0	0	112	16	0
6	280	0	0	112	0	0
North Bank of Wairau.						
No. 116	81	1	20	24	9	0
117	310	0	0	93	0	0
Awatere.						
Major Newcombe's Run.						
No. 119	166	0	0	45	13	0
121	106	0	0	39	15	0
122	117	2	0	44	1	3
123	205	2	30	77	2	10
124	111	0	0	41	12	6
125	87	0	0	32	12	6
E. Fearon's Run.						
No. 73	242	0	0	63	10	6
74	277	0	0	72	14	3
75	287	0	0	75	6	9
76	250	0	0	65	12	6
77	280	0	0	73	10	0
78	249	0	0	65	7	3
79	259	0	0	67	19	9
80	280	0	0	73	10	0
81	258	0	0	67	14	6
82	270	0	0	97	17	6
83	280	0	0	101	10	0
84	220	0	0	79	15	0
Richmond Brook Run.						
No. 53	308	0	0	82	2	8
54	263	0	0	70	2	8
55	318	0	0	84	16	0
56	272	0	0	72	10	8
57	317	0	0	84	10	8
58	259	0	0	69	1	4
59	302	0	0	80	10	8
60	320	0	0	85	6	8
61	320	0	0	85	6	8
62	318	0	0	84	16	0
Upton Fells Run.						
No. 52	264	0	0	66	0	0
53	223	0	0	55	15	0
54	194	0	0	48	10	0
55	208	0	0	52	0	0
56	263	3	0	65	18	9
57	259	0	0	64	15	0
58	300	3	0	75	3	9
Upton Downs Run.						
No. 53	136	0	0	34	0	0
54	261	2	0	65	7	6
55	280	1	0	70	1	3

SCHEDULE OF CLASS D.—PASTURE
LAND—continued.

Awatere—concluded.

Upton Downs Run—concluded.

Section.	Contents.			Upset Price.		
	A.	R.	P.	£	s.	d.
No. 56	280	1	0	70	1	3
57	272	0	0	68	0	0
58	210	3	0	52	13	9
59	277	0	0	69	5	0
60	238	1	0	59	11	3
61	226	0	0	56	10	0
62	274	0	0	68	10	0
63	263	0	0	65	15	0
64	263	0	0	65	15	0
65	183	0	0	45	15	0
66	320	0	0	80	0	0
67	225	0	0	56	5	0
68	280	0	0	70	0	0
69	315	2	0	78	17	6
70	278	0	0	69	10	0
71	265	0	0	66	5	0
72	294	0	0	73	10	0
73	259	0	0	64	15	0
74	200	0	0	50	0	0
75	176	0	0	44	0	0
76	193	0	0	48	5	0
Glen Lee Run.						
No. 23	256	0	0	68	5	4
24	222	2	0	59	6	8
25	259	0	0	69	1	4
26	256	3	0	68	9	1
27	251	0	0	66	18	8
28	262	0	0	69	17	4
29	195	0	0	52	5	4
30	134	0	0	37	14	8
Camden Run.						
No. 8	194	0	0	51	14	8
9	137	0	0	36	9	4
10	189	0	0	50	8	0
12	292	0	0	77	17	4
13	276	0	0	73	12	0
Omaka.						
Tyntesfield Run.						
No. 95	250	0	0	65	12	6
96	250	0	0	65	12	6
97	227	2	0	62	14	5
Messrs. Eyes and Empson's Run.						
No. 54	266	0	0	69	16	6
55	224	0	0	58	16	0
56	320	0	0	84	0	0
57	320	0	0	84	0	0
58	320	0	0	84	0	0
59	320	0	0	84	0	0
60	320	0	0	84	0	0
61	152	2	0	40	0	8
62	275	0	0	72	3	9
63	254	2	0	66	16	2
64	281	0	0	73	15	3
65	283	0	0	74	5	9
66	181	0	0	47	10	3
67	258	0	0	67	14	6
68	291	0	0	76	7	9
69	229	0	0	60	2	3
70	299	0	0	78	9	9

SCHEDULE OF CLASS D.—PASTURE
LAND—continued.

Omaka—concluded.

Kaituna Valley.

Section.	Contents.			Upset Price.		
	A.	R.	P.	£	s.	d.
No. 120	176	0	0	48	8	0
121	91	0	0	25	0	6
Waihopai.						
Benhopai Run.						
No. 140	312	1	0	83	5	4
141	163	0	0	43	9	4
142	262	0	0	69	17	4
Summerlands Run.						
No. 29	126	0	0	33	12	0
30	150	0	0	40	0	0
31	150	0	0	40	0	0
32	128	1	0	34	4	0
33	146	0	0	38	18	8
34	138	0	0	36	16	0
35	128	3	0	34	6	9
36	138	3	0	37	0	1
37	132	0	0	35	4	0
38	142	0	0	37	17	4
39	146	2	0	39	1	6
40	150	0	0	40	0	0
41	129	2	0	34	10	10
42	142	1	0	55	14	4
43	132	0	0	51	14	0
44	233	3	0	91	10	9
45	202	2	0	79	6	3
46	130	0	0	50	18	4
47	234	1	0	91	15	0
48	84	2	0	33	1	11
49	149	2	0	58	7	2
50	124	3	0	48	17	3
51	139	0	0	54	8	10
53	222	0	0	86	19	0
54	203	2	0	79	14	1
Waihopai.						
Hillersden Run.						
No. 24	313	0	0	83	9	4
25	300	0	0	80	0	0
26	287	0	0	76	10	8
27	271	0	0	72	5	4
Mrs. Dillon's Run.						
No. 23	290	0	0	72	10	0
24	314	0	0	78	10	0
25	312	0	0	78	0	0
26	310	0	0	77	10	0
27	305	0	0	76	5	0
28	318	0	0	79	10	0
29	312	0	0	78	0	0
30	316	0	0	79	0	0
31	275	0	0	68	15	0
32	309	0	0	77	5	0
Bank House Run.						
No. 49	288	0	0	75	12	0
50	309	0	0	81	2	3
51	320	0	0	84	0	0
52	313	0	0	82	3	3
53	320	0	0	84	0	0
54	318	0	0	83	9	6
55	311	0	0	81	12	9
56	320	0	0	84	0	0
57	315	0	0	82	13	9

SCHEDULE OF CLASS D. — PASTURE
LAND—continued.

Waihopai—concluded.

Bank House Run—concluded.

Section.	Contents.			Upset Price.		
	A.	R.	P.	£	s.	d.
No. 58	315	0	0	82	13	9
59	315	0	0	82	13	9
60	319	0	0	83	14	9
61	237	0	0	62	4	3
Flaxbourne Run.						
No. 239	317	0	0	80	11	5
240	310	0	0	78	15	10
241	315	0	0	80	1	3
242	289	3	8	73	14	2
243	303	0	0	77	0	3
244	317	0	0	80	11	5
245	319	0	0	81	1	7
248	313	1	0	79	12	5
249	219	0	0	55	13	3
250	245	0	0	62	5	5
251	314	1	24	79	18	8
252	288	0	0	73	4	0
253	314	0	0	79	16	2
254	315	0	0	80	1	3
255	280	0	0	71	3	4
256	205	2	20	52	5	10
257	293	1	20	74	11	11
258	290	0	0	73	14	2
259	273	2	0	69	10	5
260	288	0	0	73	4	0
261	309	0	0	78	10	9
263	280	0	0	73	10	0
265	200	0	0	52	10	0
266	288	0	0	75	12	0
267	310	0	0	81	7	6
Kekerangu.						
Woodbank Run.						
No. 95	195	0	0	48	15	0
96	165	0	0	41	5	0
97	262	2	0	65	12	6
98	262	2	0	65	12	6
99	262	2	0	65	12	6
100	261	0	0	65	5	0

SCHEDULE OF CLASS D. — PASTURE
LAND—concluded.

Kekerangu—concluded.

Woodbank Run—concluded.

Section.	Contents.			Upset Price.		
	A.	R.	P.	£	s.	d.
No. 101	319	2	0	79	17	6
102	288	0	0	72	0	0
103	182	0	0	45	10	0
Waipapa.						
Woodbank Run.						
No. 101	175	0	0	43	15	0
102	167	0	0	41	15	0
103	241	0	0	60	5	0
104	242	1	0	60	11	3
105	239	3	0	59	18	9
106	284	0	0	71	0	0
107	285	0	0	71	5	0
108	282	0	0	70	10	0
109	276	0	0	69	0	0
Clarence.						
Saw Tooth Run.						
No. 9	320	0	0	80	0	0
10	320	0	0	80	0	0
11	320	0	0	80	0	0
12	319	2	0	79	17	6
13	307	0	0	76	15	0
Mead Hill Run.						
No. 92	126	2	0	31	12	6
93	109	1	0	27	6	3
94	108	0	0	27	0	0
95	122	1	0	30	11	3
96	134	0	0	33	10	0
Kaikoura.						
Swyncombe Run.						
No. 71	309	3	12	82	13	0
72	275	2	8	73	12	0
73	271	1	0	72	6	8
74	195	3	30	52	5	0
75	317	2	0	84	13	4
76	312	3	0	83	8	1
77	220	0	0	58	13	8
78	121	0	0	32	5	4
79	318	0	0	84	16	0
80	319	0	0	85	1	4
81	266	0	0	70	18	8
82	215	0	0	57	6	8
83	157	0	0	41	17	4

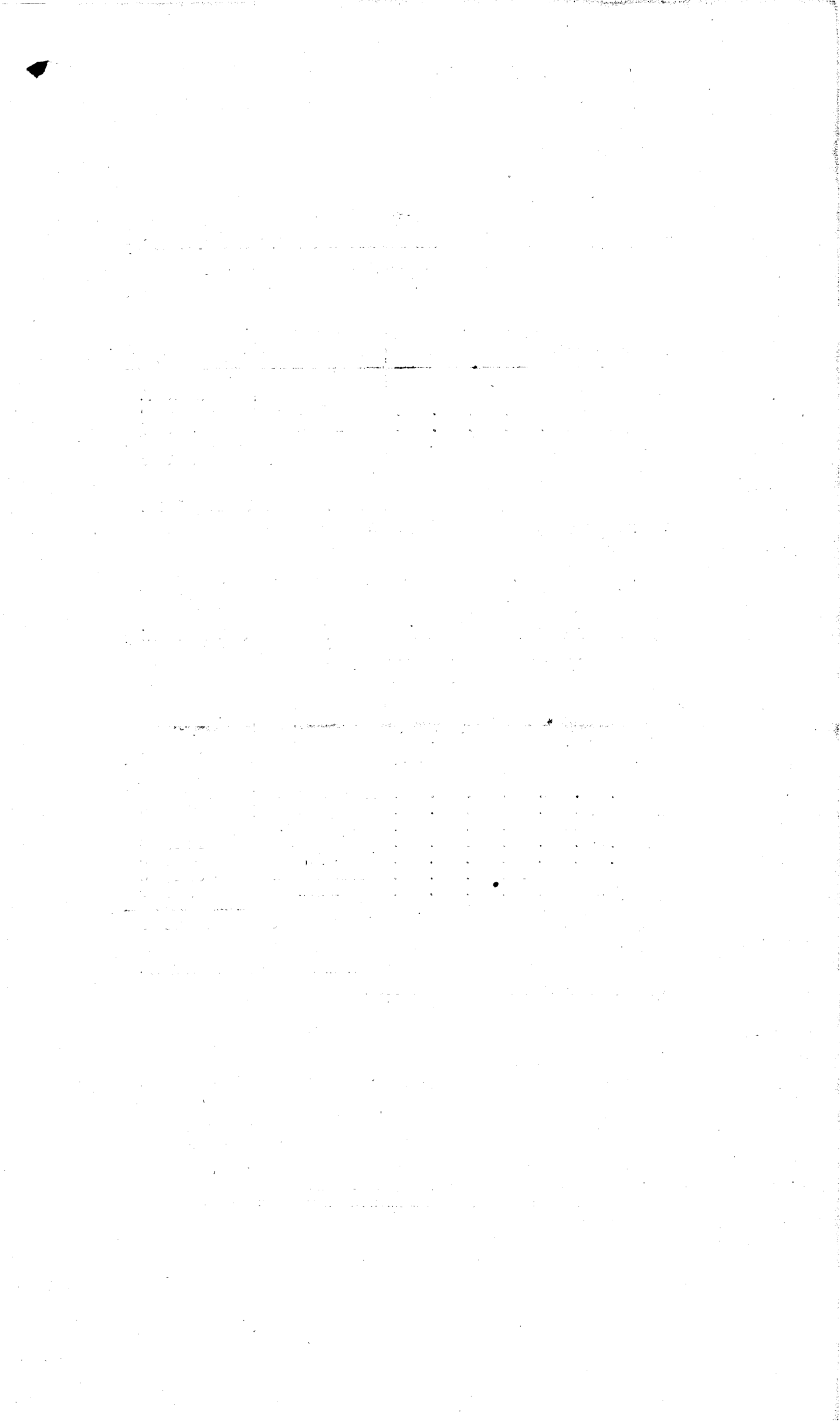
W. D. H. BAILLIE,
Superintendent.

068

STATEMENT of ALL MONEYS RECEIVED, as available Revenue, by the RE-
CEIVER of LAND REVENUE, for the Province of Marlborough during the
Month ended the 30th day of September, 1862.

HEADS OF REVENUE.	AMOUNT.
Crown Land Sales	£ s. d. 70 0 0
Depasturing License	5 0 0
Assessments on Stock	12 10 0
	£ 87 10 0

JOHN ALLEN,
Receiver of Land Revenue.



STATEMENT of CUSTOMS REVENUE collected at the Port of PICTON, during
the Quarter ended the 30th day of September, 1862.

HEADS OF REVENUE.	Quantity.	Duty.
Goods by Measurement	6 feet.	£ s. d. 1 4 0
Goods by Weight	2½ cwt.	0 7 6
	£	1 11 6

S. L. MULLER, Sub-Collector.

Custom House, Wairau, 10th October, 1862.

STATEMENT of CUSTOMS REVENUE collected at the Port of Wairau during
the Quarter ended the 30th day of September, 1862.

HEADS OF REVENUE.	Quantity.	Duty.
Spirits	779 30-32 gallons.	£ s. d. 350 19 6
Wine	53 gallons.	7 19 0
Ale, Beer, &c., in Wood	100 gallons.	2 10 0
Tea	779 lbs.	12 19 8
Sugar	1037 lbs.	4 6 5
Goods, by Measurement	154 5-12 feet.	30 17 8
Goods, by Weight	2 cwt.	0 6 0
	£	409 18 3

S. L. MULLER, Sub-Collector.

Custom House, Wairau, 10th October, 1862.