



NEW ZEALAND  
GOVERNMENT GAZETTE:  
(PROVINCE OF MARLBOROUGH.)

PUBLISHED BY AUTHORITY.

*\*\* All Public Notifications which appear in this Gazette with any Official Signature thereunto annexed, are to be considered as Official Communications made to those persons to whom they relate, and are to be obeyed accordingly.*

W. H. EYES,  
Superintendent.

VOL. X.]

SATURDAY, MARCH 13, 1869.

[No. 180.]

PROCLAMATION.

By His Honor WILLIAM HENRY EYES,  
Esquire, Superintendent of the  
Province of Marlborough in the  
Colony of New Zealand, &c.,  
&c., &c.

I, WILLIAM HENRY EYES, Super-  
intendent of the said Province of  
Marlborough, in pursuance of the power  
vested in me in this behalf, do hereby  
proclaim and appoint that the Provincial  
Council of the Province of Marlborough  
shall meet for the despatch of business at  
the Council Chamber, Blenheim, in the  
said Province, at noon, on TUESDAY, the  
fourth day of May now next ensuing.

Given under my hand and issued  
under the Public Seal of the  
said Province of Marlborough  
this Thirteenth day of March  
one thousand eight hundred  
and sixty nine.

W. H. EYES,  
Superintendent.

By His Honor's Command,  
JAMES BALFOUR WEMYSS  
Provincial Secretary.

Crown Lands Office,  
Blenheim, 8th March, 1869.

APPLICATION for a Pastoral Lease  
received by me in accordance with  
"The Marlborough Waste Lands Act,  
1867."

James Speed.

District—Waitohi Valley.

Boundaries—North and  
North-east by crown  
land; East by the Tua  
Marina River; South  
by sections 66, 68, 70,  
72, 74, 78, 79, 82, 83,  
81, 80, 75, 76, 77, and  
crown land; West by  
crown land.

Estimated Extent—1,400  
acres.

Deposit paid—£4.

JAMES BALFOUR WEMYSS,  
Commissioner of Crown Lands.

ACCOUNT of LAND in CULTIVATION, and of the AGRICULTURAL PRODUCE thereof, in New Zealand, February, 1869 (taken under the authority of "The Census Acts Amendment Act, 1867")  
 SUPERINTENDENT COLLECTOR'S RETURN.—PROVINCE OF MARLBOROUGH.

ELECTORAL DISTRICTS.	Extent of land broken up but not under crop. Acres.	IN WHEAT.		IN OATS.		IN BARLEY.		IN HAY.		In permanent artificial grass (including Land in Hay in previous column.) Acres.	IN POTATOES.		IN OTHER CROPS. Acres.
		Acres.	Estimated Gross Produce (in bushels).	Acres.	Estimated Gross Produce (in bushels).	Acres.	Estimated Gross Produce (in bushels).	Acres.	Estimated Gross Produce (in tons).		Acres.	Estimated Gross Produce (in tons).	
PICTON—128 holdings	269	361	7,978	154	3,668	57	1,190	222	315	5,111	65	337	32
WAIRAU—159 holdings	1,813	1,954	26,933	1,040	29,483	1,382	32,134	821	940	7,954	125	684	192
Portion of the County of CHEVIOT—39 holdings	106	48	1,300	62	1,700	14	305	43	51	313	66	424	14
TOTALS . . .	2,188	2,363	46,211	1,256	34,851	1,453	33,629	1,086	1,306	13,378	256	1,445	238

I certify that the above is a correct compilation from the original Returns.

JAMES BALFOUR WEMYSS,  
 Superintendent Collector.

Superintendent's Office,  
Blenheim, 5th March, 1869.

**H**IS HONOR the SUPERINTEN-  
DENT has been pleased to accept  
the resignation by

JOHN GODFREY, Esq.,

of his seat in the Provincial Council of  
Marlborough for the District of Tua Ma-  
rina.

JAMES BALFOUR WEMYSS,  
Provincial Secretary.

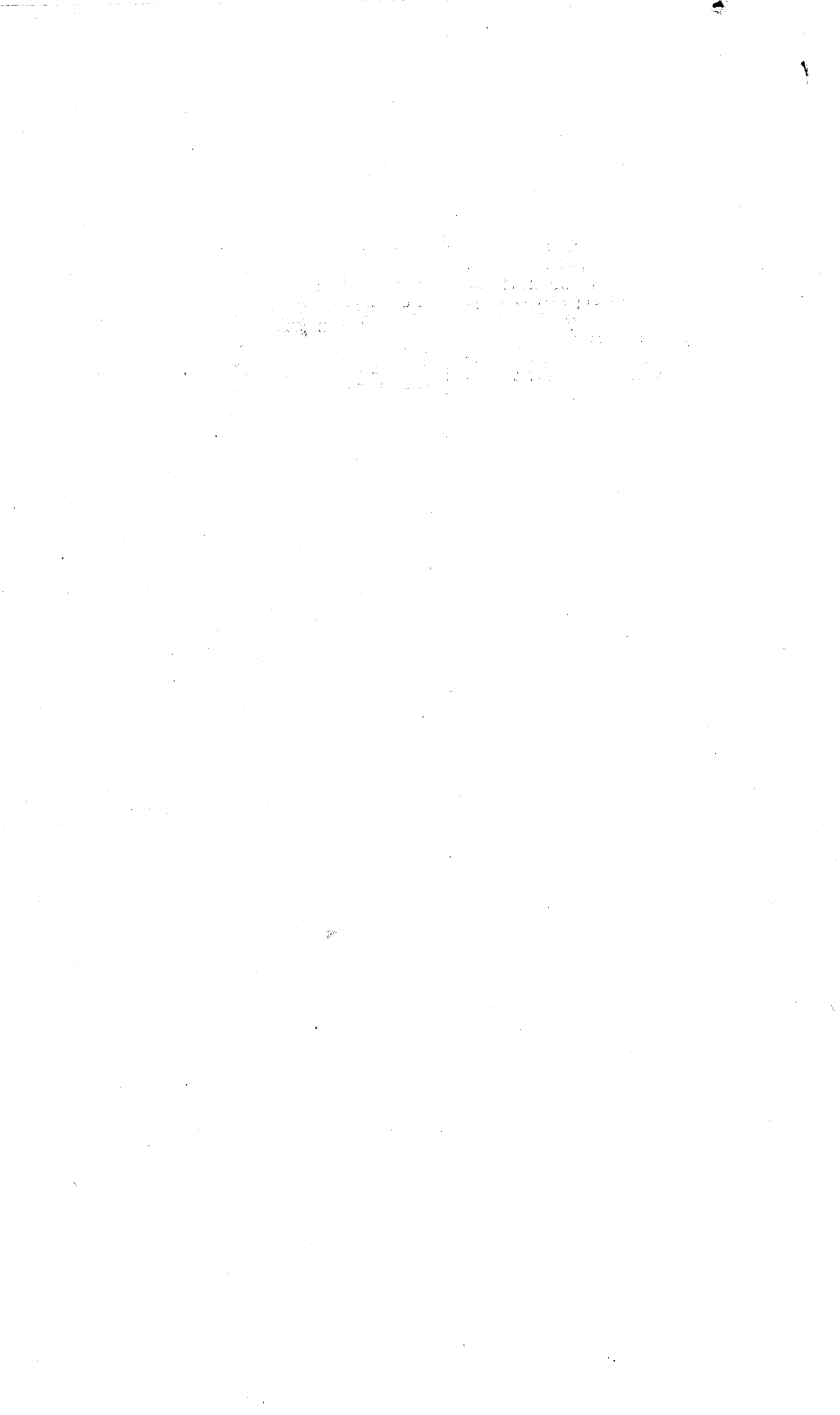
Superintendent's Office,  
Blenheim, 4th March, 1869.

**H**IS HONOR the SUPERINTEN-  
DENT has been pleased to appoint

JOHN E. WELD, Esq.,

to be Medical Officer in the District of  
Havelock for the purposes of "the Vac-  
cination Act, 1863.

JAMES BALFOUR WEMYSS,  
Provincial Secretary.



SUMMARY of RECEIPTS and PAYMENTS by the Receiver of Land Revenue at Marlborough for the period from the 1st to the 31st August, 1868, as per copy of Cash Book hereto attached.

RECEIPTS.	£ s. d.	£ s. d.
<i>Land Revenue:—</i>		
Crown Land Sales . . . . .		
Leases—Depasturing . . . . .	16 10 0	
Licenses—Depasturing . . . . .		
" —Timber . . . . .		
" —Quarrying . . . . .		
Assessment on Stock . . . . .		
Rents : . . . . .	166 5 6	
Fees on Transfers . . . . .		
Total Land Revenue . . . . .		182 15 6
<i>Special Revenue:—</i>		
Total Special Revenue . . . . .		
TOTAL RECEIPTS . . . . .		182 15 6
<hr/>		
PAYMENTS.	£ s. d.	£ s. d.
LAND REVENUE REFUNDED . . . . .		
TO PUBLIC ACCOUNT:—		
<i>Land Fund:—</i>		
Bank of New Zealand at Blenheim . . . . .	182 15 6	
Total Land Fund . . . . .		182 15 6
<i>Special Fund:—</i>		
Bank of New Zealand at . . . . .		
Total Special Fund . . . . .		
TOTAL PAYMENTS . . . . .		182 15 6

S. L. MULLER,  
Receiver of Land Revenue.

SUMMARY of RECEIPTS and PAYMENTS by the Receiver of Land Revenue at Marlborough for the period from the 1st to the 30th September, 1868, as per copy of Cash Book hereto attached.

RECEIPTS.	£ s. d.	£ s. d.
<i>Land Revenue :—</i>		
Crown Land Sales . . . . .	11 10 0	
Leases—Depasturing . . . . .	3 0 0	
Licenses—Depasturing . . . . .	35 0 0	
„ —Timber . . . . .		
„ —Quarrying . . . . .		
Assessment on Stock . . . . .		
Rents . . . . .	13 0 0	
Fees on Transfers . . . . .		
Total Land Revenue . . . . .		62 10 0
<i>Special Revenue :—</i>		
Total Special Revenue . . . . .		
TOTAL RECEIPTS . . . . .		62 10 0
PAYMENTS.		
LAND REVENUE REFUNDED . . . . .	15 17 11	
To PUBLIC ACCOUNT :—		
<i>Land Fund :—</i>		
Bank of New Zealand at Blenheim . . . . .	46 12 1	
Total Land Fund . . . . .		
<i>Special Fund :—</i>		
Bank of New Zealand at . . . . .		
Total Special Fund . . . . .		
TOTAL PAYMENTS . . . . .		62 10 0

S. L. MULLER,

Receiver of Land Revenue.

**SUMMARY of RECEIPTS and PAYMENTS** by the Receiver of Land Revenue at Marlborough for the period from the 1st to the 30th November, 1868, as per copy of Cash Book hereto attached.

RECEIPTS.	£ s. d.	£ s. d.
<i>Land Revenue:—</i>		
Crown Land Sales . . . . .	689 7 9	
Leases—Depasturing . . . . .		
Licenses—Depasturing . . . . .		
„ —Timber . . . . .		
„ —Quarrying . . . . .		
Assessment on Stock . . . . .		
Rents . . . . .		
Fees on Transfers . . . . .		
Total Land Revenue . . . . .		689 7 9
<i>Special Revenue:—</i>		
Total Special Revenue . . . . .		
TOTAL RECEIPTS . . . . .		689 7 9
PAYMENTS.		
LAND REVENUE REFUNDED . . . . .		
TO PUBLIC ACCOUNT:—		
<i>Land Fund:—</i>		
Bank of New Zealand at Blenheim . . . . .	689 8 0	
Total Land Fund . . . . .		689 8 0
<i>Special Fund:—</i>		
Bank of New Zealand at . . . . .		
Total Special Fund . . . . .		
TOTAL PAYMENTS . . . . .		689 8 0

S. L. MULLER,  
Receiver of Land Revenue.

SUMMARY of RECEIPTS and PAYMENTS by the Receiver of Land Revenue at Marlborough for the period from the 1st to the 31st December, 1868, as per copy of Cash Book hereto attached.

RECEIPTS.	£ s. d.	£ s. d.
<i>Land Revenue :—</i>		
Crown Land Sales . . . . .	58 7 6	
Leases—Depasturing . . . . .		
Licenses—Depasturing . . . . .		
„ —Timber . . . . .		
„ —Quarrying . . . . .		
Assessment on Stock . . . . .		
Rents . . . . .		
Fees on Transfers . . . . .		
Total Land Revenue . . . . .		58 7 6
<i>Special Revenue :—</i>		
Total Special Revenue . . . . .		
TOTAL RECEIPTS . . . . .		58 7 6
<hr/>		
PAYMENTS.		
LAND REVENUE REFUNDED . . . . .		
To PUBLIC ACCOUNT :—		
<i>Land Fund :—</i>		
Bank of New Zealand at Blenheim . . . . .	58 7 6	
Total Land Fund . . . . .		58 7 6
<i>Special Fund :—</i>		
Bank of New Zealand at . . . . .		
Total Special Fund . . . . .		
TOTAL PAYMENTS . . . . .		58 7 6

S. L. MULLER,

Receiver of Land Revenue.

**RETURN of ALL MONEYS RECEIVED by S. L. MULLER, as Receiver of Land Revenue at Blenheim for the undermentioned periods.**

1869	Land Sales.	Depasturing Licenses and Assessments.	Miscellaneous.	Payments into Public or Provincial Accounts.
	£ s. d.	£ s. d.	£ s. d.	£ s. d.
January . . . . .			239 0 4	239 0 4
February . . . . .			602 5 3	602 5 3
March . . . . .	50 19 9	2,673 15 2		2,724 14 11

S. L. MULLER,

Receiver of Land Revenue.

