

NEW ZEALAND
GOVERNMENT GAZETTE,
(PROVINCE OF WELLINGTON.)

Published by Authority.

All Public Notifications which appear in this Gazette, with any Official Signatures thereunto annexed, are to be considered as Official Communications made to those Persons to whom they relate, and are to be obeyed accordingly.

J. WOODWARD,
ACTING PROVINCIAL SECRETARY.

VOL. VIII.]

WEDNESDAY, SEPTEMBER 18, 1861.

[No 30

GENERAL AUTHORITY TO INSTITUTE PROCEEDINGS UNDER THE "ARMS ACT, 1860."

By His Excellency Colonel THOMAS GORE BROWNE, Companion of the Most Honorable Order of the Bath Governor and Commander-in-Chief in and over Her Majesty's Colony of New Zealand and its Dependencies, and Vice-Admiral of the same, &c., &c., &c.

IN Pursuance of the power for this purpose vested in me under the "Arms Act, 1860," I, THOMAS GORE BROWNE, the Governor of the Colony of

New Zealand, Do hereby appoint

FREDERICK ATCHISON,

Chief Officer of the Police in the Province of Wellington, to be a person by whom and at whose instance Indictments and Informations shall be preferred, or Proceedings instituted against any person for any offence by the said Act, declared to be a felony or misdemeanor.

Witness my hand at the Government House, at Auckland, this fifth day of September, One thousand eight hundred and sixty-one.

T. GORE BROWNE,

By His Excellency's command,
WILLIAM FOX.

RATIONS TO PAUPERS.

D. ANDERSON, Accepted.			W. SPINKS, Declined.		
	s.	d.		s.	d.
Rations, each	0	6	0	6	0

RATIONS TO IMMIGRANTS.

D. ANDERSON, Accepted.			J. WALLACE, Declined.		
	s.	d.		s.	d.
Rations, each	1	2	1	4	4

LEATHER.

W. PAYNE, Accepted.			L. LEVY, Declined.			
	£	s.	d.	£	s.	d.
Sole Leather, New Zealand Manufactured, per lb.	0	1	1	0	1	6
Do. " "	0	1	8	0	1	8
Kip " "	0	3	0	0	3	0
Do. New Zealand do.	0	2	2	0	2	6
Do. British do.	0	4	0	0	4	0

HOSPITAL CLOTHING AND UTENSILS.

D. ANDERSON, Accepted.			F. K. ALLEN, Declined.				
	£	s.	d.		£	s.	d.
Blankets 10 x 4 per pair	1	3	6	9 x 4	1	2	0
Bed Ticks, each	0	6	0		0	6	9
Towelling course, per yard	0	0	7½		0	0	7
Diaper, do.	0	0	10		0	0	9½
Calico, do.	0	0	5½	from 5½d to	13	9½	
Shirts, Scotch Twilled per doz.	1	12	0		1	13	6
" course Bath "	2	14	0		2	3	6
" blue serge "	3	5	0		3	8	0
Trowsers, Moleskin each	0	6	6		0	6	6
Boots or Shoes, per pair	0	14	0		0	12	6
Night Gowns, each	0	5	0		0	6	0
Braces, "	0	0	10		0	0	9½
Thread, per lb.	0	4	0		0	4	0
Needles, per 100	0	1	2		0	0	10

PRISON CLOTHING AND NECESSARIES.

D. ANDERSON, Accepted.	F. K. ALLER, Declined.		GEORGE MOORE, Declined.	
	£	s. d.	£	s. d.
Red Serge Shirts, per doz.	2	5 0	2	16 6
Scotch Twill	1	10 0	1	13 6
Blue Guernsey	3	12 0	2	7 6
Men's Trowsers, per pair	0	7 6	0	6 3
" " lined all through	0	8 3	0
Woolen Caps, each	0	2 0	1	4 0
Mattrasses	0	4 0	0	4 0
Worsted Stockings, per doz.	1	4 0	1	0 6
Blankets, 10-4, per pair	1	3 0	0	13 0
Good heavy Woolen Rugs, each	0	14 0
Watertight Boots, per pair	0	1 4 6
Colonial Sole Leather, per lb.	0	2 6
" Kip,

HOSPITAL RATIONS AND STORES.

D. ANDERSON, Accepted.	W. PHELAN, Declined.		J. WALLACE, Declined.	
	£	s. d.	£	s. d.
Full Diet Rations,	0	0 9	0	0 11½
Half "	0	0 7½	0	0 10
Flour	0	0 0	0	0 7
Spoon	0	0 4½	0	0 6
Milk	0	0 8	0	0 9
Beef or Mutton, per lb.	0	0 4½	0	0 6
Flour	0	0 2½	0	0 3
Arrowroot	0	1 0	0	1 6
Sage	0	0 6	0	0 7
Rice	0	0 3	0	0 3
Tea	0	2 7	0	2 8
Sugar, bright	0	0 6	0	0 7
" loaf	0	0 7½	0	0 8
Oatmeal	0	0 4	0	0 4
Salt	0	0 1	0	0 1
Soap	0	0 6	0	0 6
Pearl Barley	0	0 4	0	0 4
Potatoes	0	0 1	0	0 1
Mixed Vegetables	0	0 2	0	0 3
Treacle	0	0 6	0	0 5
Honey	0	1 0	0	1 0
Lard	0	0 11	0	0 1 6
Mustard	0	1 4	0	1 6
Port Wine, doz.	1	15 0	1	15 0
Sherry	1	12 0	1	12 0
Porter	0	2 0	0	2 0
Eggs	0	2 0	0	2 0
Brandy, per gal.	1	5 0	1	5 0
Rum	0	13 6	0	14 0
Vinegar	0	3 0	0	3 0
Lamp Oil	0	5 0	0	5 0
Lard	0	7 0	0	7 6
Spirits of Wine, per gal.	1	10 0	1	10 0
Turpentine	0	7 0	0	7 6
Olive Oil, per pint	0	1 8	0	1 6
Milk	0	0 3	0	0 3
Fowls, each	0	2 6	0	2 6

TOOLS AND SUNDRIES.

E. W. MILLS, Accepted. (With the exception of Wheelbarrows.)			G. MOORE, Declined.	W. MASON, Declined.	R. SATCLIFFE, Declined.	QUIN AND ALLEN, Declined.
		£ s. d.	£ s. d.	£ s. d.	£ s. d.	£ s. d.
Adzes,	each	0 3 6	0 3 6	0 3 4	0 3 6	
Axes,	1 inch	0 3 6	0 3 6	0 3 6	0 3 6	
"	1½ "	0 5 6	0 5 6	0 5 3	0 5 3	
"	1½ "	0 7 0	0 6 6	0 6 9	0 7 0	
"	2 "	0 8 6	0 8 6	0 8 0	0 8 6	
Axes, American	"	0 8 3	0 8 9	0 8 6	0 8 0	
" English	"	0 6 0	0 5 6	0 5 6	0 6 0	
Bill Hooks	"	0 4 6	0 4 6	0 4 3	0 4 6	
" cast steel	"	0 6 0	0 7 0	0 6 0	0 6 6	
Blocks, per inch	"	7d. to 10d.	8d. to 1 3	0 0 9		
Blasting Tools,	per lb.	0 0 5	0 0 7	0 0 4½	0 0 5	
Spoons and Needles	"	0 0 8	0 0 8	0 0 7	0 0 7½	0 0 6
Miscellaneous	"	0 0 7	0 0 9	0 0 5½	0 0 7	0 0 6
Wrought Iron	per cwt.	1 0 0	per lb. 3	per cwt. £1 1s.	1 0 0	
" Steel	per lb.	0 0 7	0 0 9	0 0 9	0 0 8	1 0 0
Coals, English	per cwt.	0 3 6	0 4 6	0 3 6		0 1 0
" Sydney	"	0 3 0	0 4 0	0 3 3	0 3 0	
Chains, Timber	per lb.	0 0 6	0 0 6	0 0 6	0 0 5½	
Drawing Knives, 6, 8, 10, 12 in.	each	0 2 6	2s. 3d. to 3s.	0 2 6		0 0 7
Files, various	per doz.	5s. to 8s.	0 7 6	5s. to 8 0		
Grindstones, English, per inch	"	0 0 8	0 0 9	0 0 8		
" Sydney	"	0 0 5	0 0 6	0 0 5		
Hammers, sledge	per lb.	0 0 7	0 0 9	0 0 8	0 0 7½	0 0 8
" Stone	"	0 0 9	0 0 9	0 0 7	0 0 9½	0 0 8
Lines, ¼ inch, 100 feet	each	0 2 0	0 2 0	0 1 10		
Mattocks and Pickaxes, per lb.	"	0 0 8½	0 0 9	0 0 7	0 0 8	0 0 8
Pickaxes, American, cast steel, per doz.	"	3 5 0	4 0 0	3 10 0	3 10 0	
Rakes, 15 inches wide, each	"	0 2 0	0 2 3	0 2 3	0 2 3	
Rope, Europe	per cwt.	3 0 0	3 0 0	3 4 0		
" Colonial	"	2 4 0	2 6 0	2 2 0		
Shovels, round, 0, 1, 2, 3, per doz.	"	2 5 0	2 5 0	2 4 0		
" American, cast steel,	"	3 5 0	3 10 0	3 3 0		
" " square	"	3 0 0	3 5 0	3 0 0		
Spades, Foster's, 3, 4,	"	2 15 0	3 0 0	2 17 0		
" common,	"	2 0 0	2 2 0	2 0 0		
Saws, hand,	each	0 6 0	0 7 6	0 6 0	0 6 0	
" Cross cut and Pit, per foot	"	3s. 3d. to 3 9	0 3 9	3s. 4d. to 3s. 10	3s. to 3 9	
Spikes	per lb.	0 0 4	0 0 4½	0 0 4		
Spokeshaves, plated	each	0 2 6	0 3 0	0 2 3		
" common	"	0 2 0	0 2 0	0 2 0		
Wheelbarrows	"	1 4 0	1 5 0			
Saw Sets	"	1s. 3d. to 1 9	0 1 9	1s. 3d. to 1s. 9d		
Leg Irons	per pair	0 12 0	0 14 0	0 11 0	0 12 0	
Rivets for ditto	per doz.	0 1 6	0 1 6	0 1 6	0 1 0	0 16 0
Handcuffs	per pair	0 7 6	0 7 8	0 8 0	0 7 0	0 2 6
Nails	per lb.	5d. to 7	0 0 7	0 0 6½	

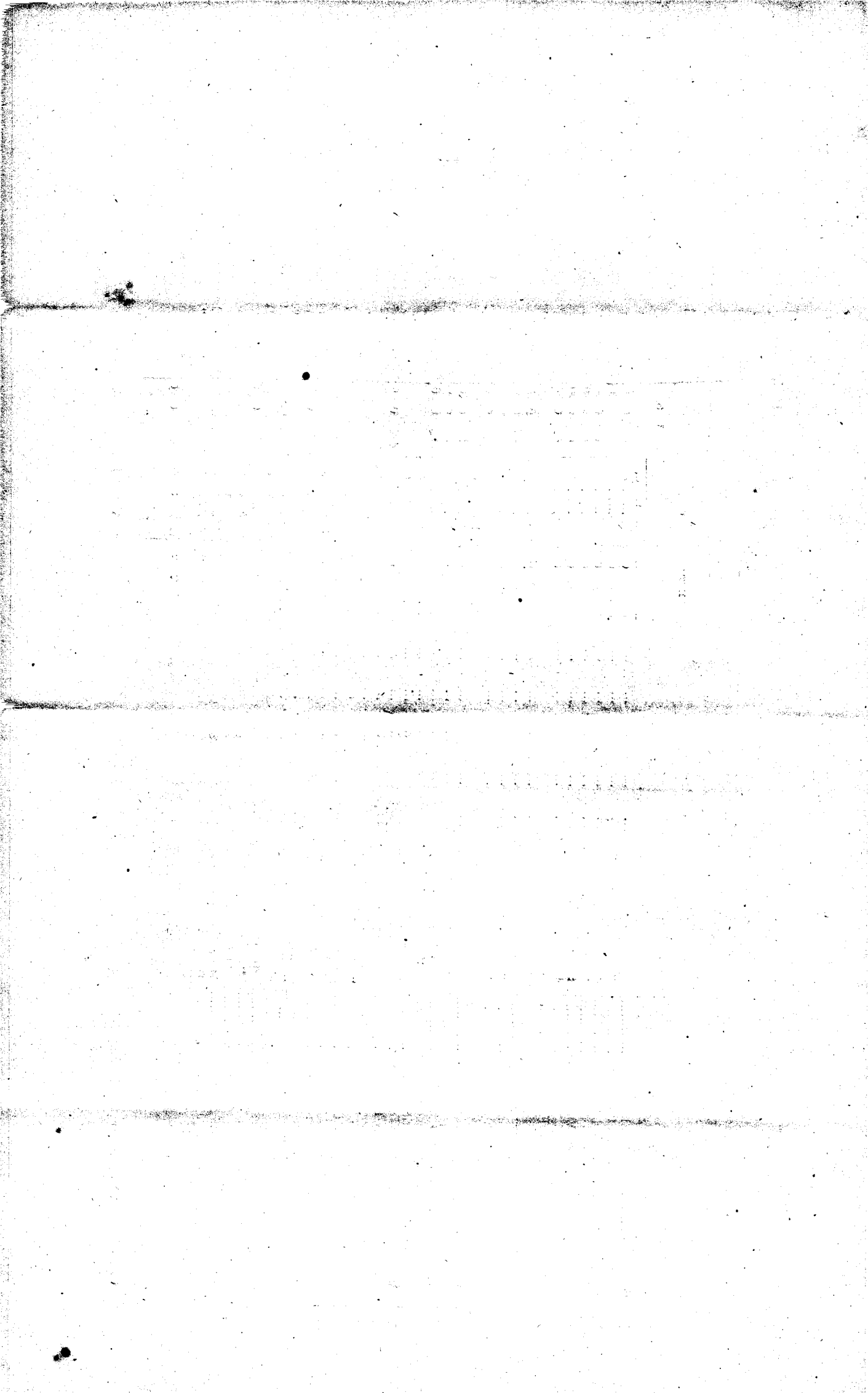
COALS:

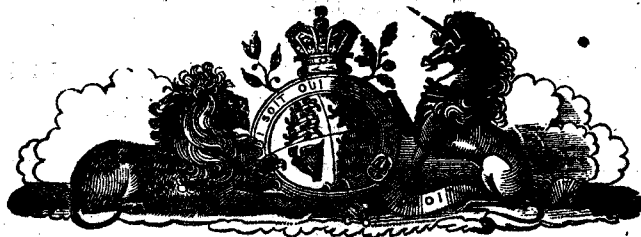
E. W. MILLS, Accepted.		J. DRANSFIELD, Declined.	
	£ s. d.		£ s. d.
English Coals, per ton, ...	3 10 0	...	2 4 6
New South Wales " ...	3 0 0	...	2 19 0

RETURN OF LANDS SOLD AND DEPOSITS RECEIVED IN THE PROVINCE OF WELLINGTON,
FROM THE 1ST TO THE 30TH JUNE, 1861.

DISTRICT.	PURCHASER.	LAND SELECTED OR APPLIED FOR.	PAYMENT.			REMARKS
			CONTENTS.	CASH.	Land Orders issued under Waste Lands Act, 1858.	
			A. R. P.	£ s. d.		
Wellington	John Shaw	In the Lower Hutt District	60 0 0	60 0 0	
	James Chance	" Pahautanui "	60 0 0	60 0 0	
	Samuel Lockett	" Makara "	60 0 0	60 0 0	
	Thomas Nodder	" " "	60 0 0	60 0 0	
	John Valentine	" Lower Hutt "	60 0 0	60 0 0	
	George Coysh	" " "	60 0 0	60 0 0	
	Samuel Ford	Section, No. 44, Agricultural Reserve, Pahautanui, and 20 acres adjoining	60 0 0	60 0 0	
	William Boatfield	In the Lower Hutt District	60 0 0	60 0 0	
	William Corner	" Pahautanui "	60 0 0	60 0 0	
	Joseph Lawson	" Makara "	60 0 0	60 0 0	
Wainui	J. F. E. Wright	Part of Section, No. 7, Upper Kai-warra-warra District	40 0 0	20 0 0		
	William Harris	In the Whareroa Block	80 0 0	80 0 0	
Wanganui	John Hill	" " "	60 0 0	60 0 0	
	James Brownlee	Left Bank, Wanganui River	60 0 0	60 0 0	
	Alexander Williamson	" " "	50 0 0	25 0 0		
Wairarapa and East Coast	Richard Taylor	Part of Section, No. 11, Right Bank	17 0 0	8 15 0		
	W. M. Smith	On Smith and Revans' Run	400 0 0	400 0 0	
	Henry Bunny	Suburban Section, No. 333, Featherston	5 0 0	15 0 0		
	J. P. Russell	On Robert Russell's Run	80 0 0	40 0 0		
	Robert Russell	" " "	12 10 0		
	Hugh Cleland	In the Opaki Block	80 0 0	80 0 0	Deposit for 500 acres of 5s. land
	John McKenzie	" Taratahi Plain Block	530 0 0	306 10 0		200 Acres of this selection were put up to auction under clauses xi. and xii. of the Additional Land Regulations.
	Palmer Brown	" Tirohanga "	60 0 0	60 0 0	Deposit for 960 acres of 5s. land
	Charles Matthews	On Applicant's Run	280 0 0	140 0 0		" 1280 "
	"	" " "	24 0 0		
"	" " "	32 0 0			
William Searrow	In the Opaki Block	80 0 0	80 0 0		
James Wilkinson	" Western Lake Block	10 0 0	5 0 0			
James Tweeddale	Town Section, No. 55, Featherston	1 0 0	5 0 0			
Edwin Meredith	On Applicant's Run	142 8 6		Auction Balance	
George Moore	Sections, Nos. 64, 65, 66, 67, 68, 69, 70, 71, & 72, Warehama	2149 0 0	487 5 0		" "	
Totals.....£			4582 2 0	1263 8 6	1420 0 0	

Printed by McKenzie and Muir by Authority of the Provincial Government.





NEW ZEALAND
GOVERNMENT GAZETTE,
(PROVINCE OF WELLINGTON.)

Published by Authority.

All Public Notifications which appear in this Gazette, with any Official Signatures thereunto annexed, are to be considered as Official Communications made to those Persons to whom they relate, and are to be obeyed accordingly.

J. WOODWARD,
 ACTING PROVINCIAL SECRETARY.

VOL. VIII.]

MONDAY, SEPTEMBER 30, 1861.

[No 31

NOTICE is hereby given that the un-
 dermentioned Application has been
 duly registered, at the Crown Lands
 Office, Wellington, and that failing ob-
 jections, duly given to the Commissioner
 of Crown Lands, within three months
 from the date hereof, a License for the
 Run will be issued to the Applicant.

District.	Name.	Boundaries.	No. of Acres.
East Coast	John Sutherland.	North by the Ohanga River, East by the Ohanga and Waingongoro Rivers, South East by the Waingongoro and Makatote Rivers, South by the Mataikuna River, and South West by a line starting from the junction of the Pakoe and Mataikuna Rivers, and bearing S. E. $\frac{1}{2}$ S. till it strikes the Ohanga River.	13,800 exclusive of Bushy Ranges.

WILLIAM FITZHERBERT,
 Commissioner of Crown Lands.
 Crown Lands Office,
 Wellington, 24th September, 1861.

Provincial Secretary's Office,
 Wellington, 30th September, 1861.

HIS Honor the Superintendent has
 been pleased to appoint

CORPORAL CHARLES MILLWARD,
 to be Sergeant of Police.

J. WOODWARD,
 Acting Provincial Secretary.

NOTICE:

Provincial Secretary's Office,
 Wellington, 2nd September, 1861.

MR. HENRY G. MUSSEN having re-
 signed the office of Chairman of
 the Kahauraponga Board of Wardens,

MR. ALEXANDER WILSON,

has been elected by the Board to suc-
 ceed him.

J. WOODWARD,
 Acting Provincial Secretary

ABSTRACT OF RECEIPTS AND EXPENDITURE

FOR THE

Province of Wellington,

FOR THE QUARTER

COMMENCING ON THE FIRST DAY OF APRIL, AND ENDING ON THE THIRTIETH DAY OF JUNE,
1861.

	£	s.	d.	£	s.	d.
Balance in hands of Provincial Treasurer, last quarter	9444	9	10			
Balance in hands of Acting Provincial Sub-Treasurer, Napier, last quarter	11	0	7			
Balance in hands of Provincial Sub-Treasurer, Wanganui, last quarter	560	0	7			
				10015	11	0

RECEIPTS

ORDINARY REVENUE—

Customs, (including Wanganui) \$ of gross receipts	3020	8	11			
Licenses, Publican's	1405	0	0			
" Auctioneers	390	0	0			
Fees and Fines, Bench of Magistrates	8	7	0			
Pilotage, Wellington	134	9	7			
Registration of Deeds	107	6	4			
Assessment on Sheep	1	4	4			
Hospital Subsistence Money	21	8	6			
Poundage Fees	3	3	0			
Registration of Brands	5	0	0			
" Dogs	0	12	0			
Proportion of Expense of Hospital received from the General Government	61	18	9			
Refund of passage money of Witness (paid to him in error)	2	0	0			
Proceeds of Articles made in the Gaol at Wellington	16	19	9			
				5107	18	2
Contributions to obtain Grants in Aid				120	10	0
Amount on account of Immigrants' Promissory Notes				374	2	3
Rent of land, &c., at the Korokoro, paid by J. H. Percy and Son				7	10	0
Balance of amount remaining in the Union Bank of Australia, London				41	9	3
Amount received from General Government as payment in Suspense account, on account of Interest due from Province of Hawke's Bay	3000	0	0			
Amount of Special Serip, received from the General Government	50	0	0			

Carry forward.. £18,717 0 8

EXPENDITURE.

	£	s.	d.	£	s.	d.
1. EXECUTIVE.						
Superintendent's Department	300	12	3			
Provincial Secretary's	120	4	4			
Provincial Treasurer's	191	12	0			
Law Officer's	75	9	0			
Chief Land Commissioner's	96	11	8			
						684 0 3
2. LEGISLATIVE.						
Provincial Council						1317 3 4
3. JUDICIAL.						
Supreme Court	37	0	0			
District	8	8	0			
Gaol Department Wellington	358	5	5			
do. Wanganui	53	14	3			
Sessions of the Peace	7	1	8			
Police	472	8	11			
Registrar of Deeds	76	8	9			
						1013 7 0
4. CHARITABLE.						
Medical	230	5	6			
Lunatic Asylum	120	16	8			
						351 2 2
5. SPECIAL.						
Harbour Department, Wellington	276	0	4			
Do. Wanganui	66	8	0			
Lighthouse	105	14	10			
Signal Station	18	8	0			
Inspectors of Sheep &c.	31	5	0			
Pounds	17	18	0			
Weights and Measures, Brands &c.	25	0	0			
						590 14 2
6. AUDIT DEPARTMENT.						
Auditing						100 0 0
7. MISCELLANEOUS.						
Rent of Public Offices	25	5	0			
Messengers to do.	46	0	0			
Fuel for do.	6	0	0			
Printing Gazettes and Forms	33	19	0			
Charitable Aid	71	10	11			
Special Contingencies	18	15	0			
Miscellaneous Contingencies	91	17	7			
Expenses of Elections	23	8	6			
Dog Nuisance Act	6	5	0			
						323 1 0
8. LAND DEPARTMENT.						
Salaries of Clerks &c.						215 17 3

Carry forward.. £4,595 5 2

